

NEENAH R-1772 W/ TYPE 'D' LID  
OR APPROVED EQUAL. INSTALL  
TOP OF CASTING 1/4" BELOW  
FINISHED PAVEMENT

USE 1/4" ROLLED MASTIC ROPE BETWEEN  
STRUCTURE AND RINGS, ONE ALONG  
INSIDE AND OUTSIDE EDGE. CASTING  
AND RINGS MUST BE ALIGNED  
VERTICALLY AND HAVE NO CRACKS  
(2.0" MAXIMUM HORIZONTAL OFFSET  
ALLOWED IF PRE-APPROVED)

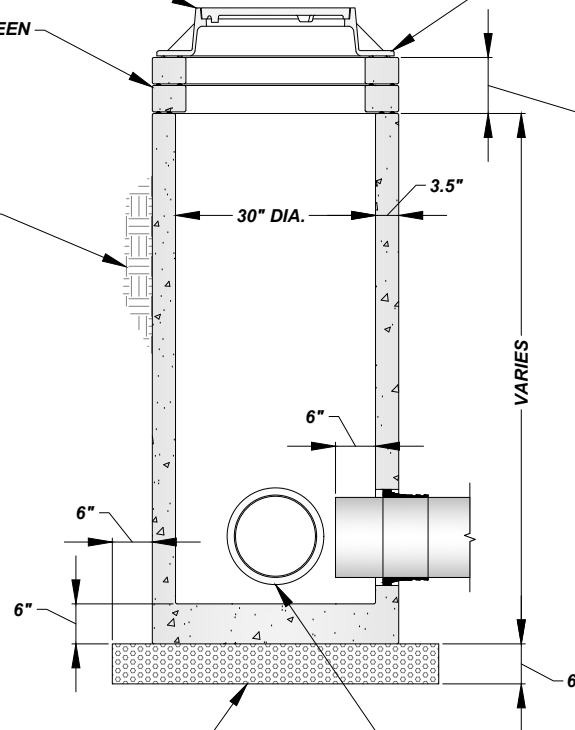
BACKFILL WITH B-BORROW OR  
APPROVED CLEAN SPOILS.  
COMPACT IN PROPER LIFTS BY  
MECHANICAL MEANS. IF UNABLE TO  
COMPACT BY MECHANICAL MEANS,  
PLACE No. 8 PEA GRAVEL BETWEEN  
EXCAVATION WALL AND STRUCTURE

USE 1/4" ROLLED MASTIC ROPE BETWEEN  
CASTING AND RING, ONE ALONG INSIDE AND  
OUTSIDE EDGES WHEN POSSIBLE. FOR FINE  
ADJUSTMENT, A NON-SHRINK RAPID SETTING  
MORTAR, SPEED CRETE REDLINE OR SIMILAR  
APPROVED MATERIAL CAN BE USED, MAXIMUM  
OF 2" THICKNESS. NO SHIMS, BRICK OR  
CONCRETE UNDER CASTING

MAXIMUM 12" OF ADJUSTMENT, 2 OR FEWER RINGS.  
2" AND THICKER PRE-CAST RINGS ONLY

**NOTES:**

1. ALL STRUCTURES MUST BE INSPECTED BY A  
CITY REPRESENTATIVE PRIOR TO  
INSTALLATION. STRUCTURES WILL BE  
REJECTED IF REINFORCING STEEL IS EXPOSED,  
EXCESSIVE VOIDS ARE OBSERVED IN THE  
CONCRETE, DAMAGE TO CONCRETE EDGES  
BETWEEN SECTIONS AND ANY OTHER ITEM  
THAT MAY COMPROMISE THE STRUCTURE
2. 30" DIA. STRUCTURE SUITABLE UP TO A SINGLE  
15" DIA. PIPE
3. 30" DIA. STRUCTURE SUITABLE UP TO TWO 12"  
DIA. PIPES AT 90° TO EACH OTHER
4. PIPES LARGER THAN 15" DIA. REQUIRE A  
SEWER MANHOLE OR CATCH BASIN



No. 8 AGGREGATE, MAYBE ELIMINATED BY ENGINEER IF  
CONDITIONS DO NOT WARRANT THE 6" OF BASE MATERIAL

BOOTS ARE NOT REQUIRED FOR STORM PIPE CONNECTIONS. SEAL GAP BETWEEN THE  
PIPE/STRUCTURE OR INSIDE OF BOOT WITH A NON-SHRINK RAPID SETTING MORTAR, SPEED  
CRETE RED LINE OR APPROVED. EXTEND STORM PIPE 6" BEYOND INSIDE WALL FACE. AN  
INVERT INSTALLED IN THE FIELD MUST BE CORED, NO HAND CUT INVERTS ALLOWED

## SEWER INLET (TYPE O) - FLAT CASTING

NOT TO SCALE