

NEENAH R-3070 W/ TYPE 'R' OR 'V' GRATE OR APPROVED EQUAL

USE 1/4" ROLLED MASTIC ROPE BETWEEN STRUCTURE AND RINGS, ONE ALONG INSIDE AND OUTSIDE EDGE. CASTING AND RINGS MUST BE ALIGNED VERTICALLY AND HAVE NO CRACKS (2.0" MAXIMUM HORIZONTAL OFFSET ALLOWED IF PRE-APPROVED)

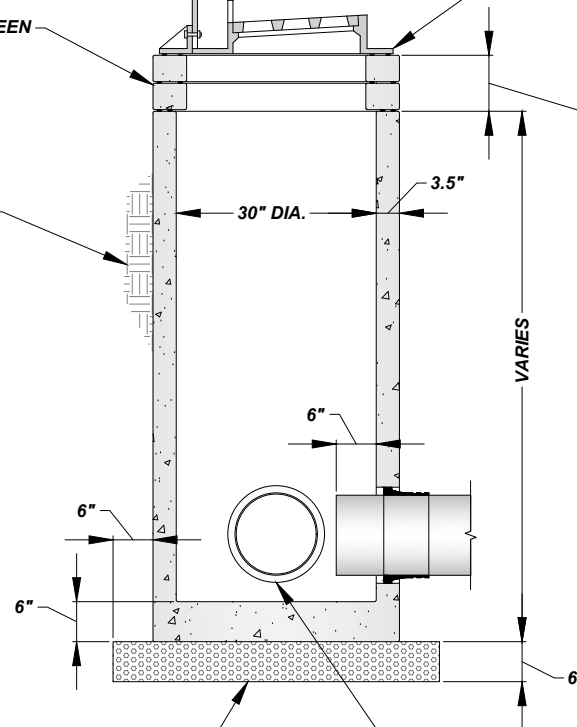
BACKFILL WITH B-BORROW OR APPROVED CLEAN SPOILS. COMPACT IN PROPER LIFTS BY MECHANICAL MEANS. IF UNABLE TO COMPACT BY MECHANICAL MEANS, PLACE No. 8 PEA GRAVEL BETWEEN EXCAVATION WALL AND STRUCTURE

USE 1/4" ROLLED MASTIC ROPE BETWEEN CASTING AND RING, ONE ALONG INSIDE AND OUTSIDE EDGES WHEN POSSIBLE. FOR FINE ADJUSTMENT, A NON-SHRINK RAPID SETTING MORTAR, SPEED CRETE REDLINE OR SIMILAR APPROVED MATERIAL CAN BE USED, MAXIMUM OF 2" THICKNESS. NO SHIMS, BRICK OR CONCRETE UNDER CASTING

MAXIMUM 12" OF ADJUSTMENT, 2 OR FEWER RINGS. 2" AND THICKER PRE-CAST RINGS ONLY

NOTES:

1. ALL STRUCTURES MUST BE INSPECTED BY A CITY REPRESENTATIVE PRIOR TO INSTALLATION. STRUCTURES WILL BE REJECTED IF REINFORCING STEEL IS EXPOSED, EXCESSIVE VOIDS ARE OBSERVED IN THE CONCRETE, DAMAGE TO CONCRETE EDGES BETWEEN SECTIONS AND ANY OTHER ITEM THAT MAY COMPROMISE THE STRUCTURE
2. 30" DIA. STRUCTURE SUITABLE UP TO A SINGLE 15" DIA. PIPE
3. 30" DIA. STRUCTURE SUITABLE UP TO TWO 12" DIA. PIPES AT 90° TO EACH OTHER
4. PIPES LARGER THAN 15" DIA. REQUIRE A SEWER MANHOLE STRUCTURE



No. 8 AGGREGATE, MAYBE ELIMINATED BY ENGINEER IF CONDITIONS DO NOT WARRANT THE 6" OF BASE MATERIAL

BOOTS ARE NOT REQUIRED FOR STORM PIPE CONNECTIONS. SEAL GAP BETWEEN THE PIPE/STRUCTURE OR INSIDE OF BOOT WITH A NON-SHRINK RAPID SETTING MORTAR, SPEED CRETE RED LINE OR APPROVED. EXTEND STORM PIPE 6" BEYOND INSIDE WALL FACE. AN INVERT INSTALLED IN THE FIELD MUST BE CORED, NO HAND CUT INVERTS ALLOWED

SEWER INLET (TYPE N) - CURB CASTING

NOT TO SCALE