

LID OR
 L TOP OF
 ED
 NISHED
 ED AREAS

24" DIA.

MAXIMUM 12" OF ADJUSTMENT, 2 OR FEWER RINGS.
 2" AND THICKER PRE-CAST RINGS ONLY

24" TO 48" ECCENTRIC CONE

12" - 16" TYP.

'T' = 1/2 PIPE DIA.

24" TO 48" BARREL SECTION

PLUG

5"

4'-0" DIA.

NON-SHRINK RAPID SETTING MORTAR, SPEED CRETE RED LINE OR SIMILAR APPROVED MATERIAL

'T' OR 6" MIN. (CLASS 'A' CONCRETE)

'T' OR 6" MIN.

VARIES BASE

6"

(2) 45° PVC ELBOWS, NO S

FORM CHANNEL IN BENCH PREVENT SOLIDS FROM CHANNEL DOWNSTREAM MATERIAL FROM COLLECT TWO FLOW LINES. IF POUR GOSHEN ENGINEERING DESIGN BEFORE INSTALLING CONTRACTOR MAY BE RE-POUR WITH NO ADDITI

AGGREGATE, MAYBE ELIMINATED BY
 TER IF CONDITIONS DO NOT
 NT THE 6" OF BASE MATERIAL

BOOTS REQUIRED FOR ALL SANITARY PIPE CONNECTIONS. AN INVERT INSTALLED I
 BE CORED. SEAL THE GAP BETWEEN THE PIPE AND BOOT WITH A NON-SHRINK RAP
 MORTAR, SPEED CRETE RED LINE OR APPROVED. EXTEND PIPE 6" BEYOND INSIDE
 ABOVE PRECAST INVERT AND BENCH

FORM CHANNEL IN BENCH, 4" MIN DEPTH, TO MAIN INVERT TO PREVENT SOLIDS FROM COLLECTING BELOW THE PIPE. CURVE CHANNEL DOWNSTREAM ALONG MAIN INVERT TO PREVENT MATERIAL FROM COLLECTING AT THE INTERSECTION OF THE TWO FLOW LINES. IF POURED IN THE FIELD, THE CITY OF GOSHEN ENGINEERING DEPARTMENT MUST PRE-APPROVE THE DESIGN BEFORE INSTALLING. IF NOT PRE-APPROVED, THE CONTRACTOR MAY BE REQUIRED TO REMOVE THE BENCH AND RE-POUR WITH NO ADDITIONAL COMPENSATION.

SEWER EXTERIOR DROP MANHOLE (TYPE D) - CONE W/ MANHOLE CASTING

The City Of Goshen
Department of Public Works & Safety
Office of Engineering

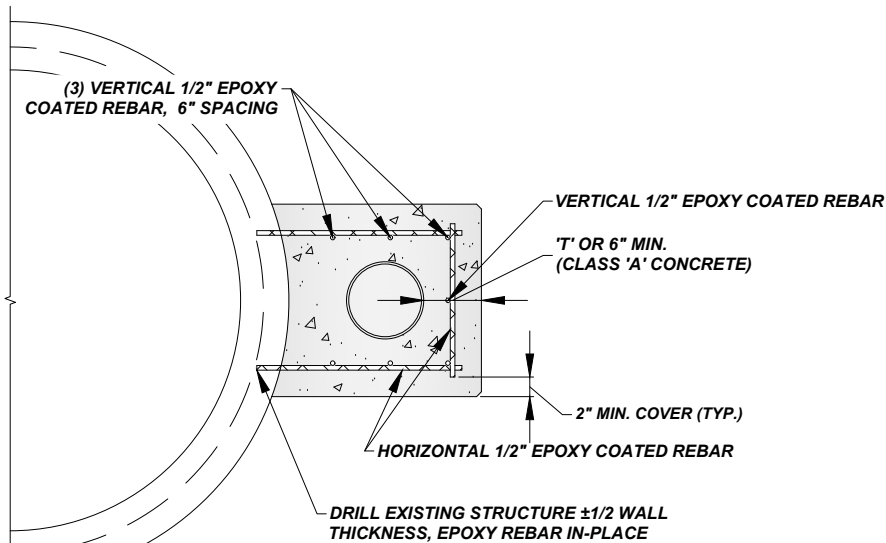
Date Approved By The City Of Goshen Board Of Public Works & Safety and Approved Revisions

03/27/2025	07/24/2025				

PAGE 1 OF 2

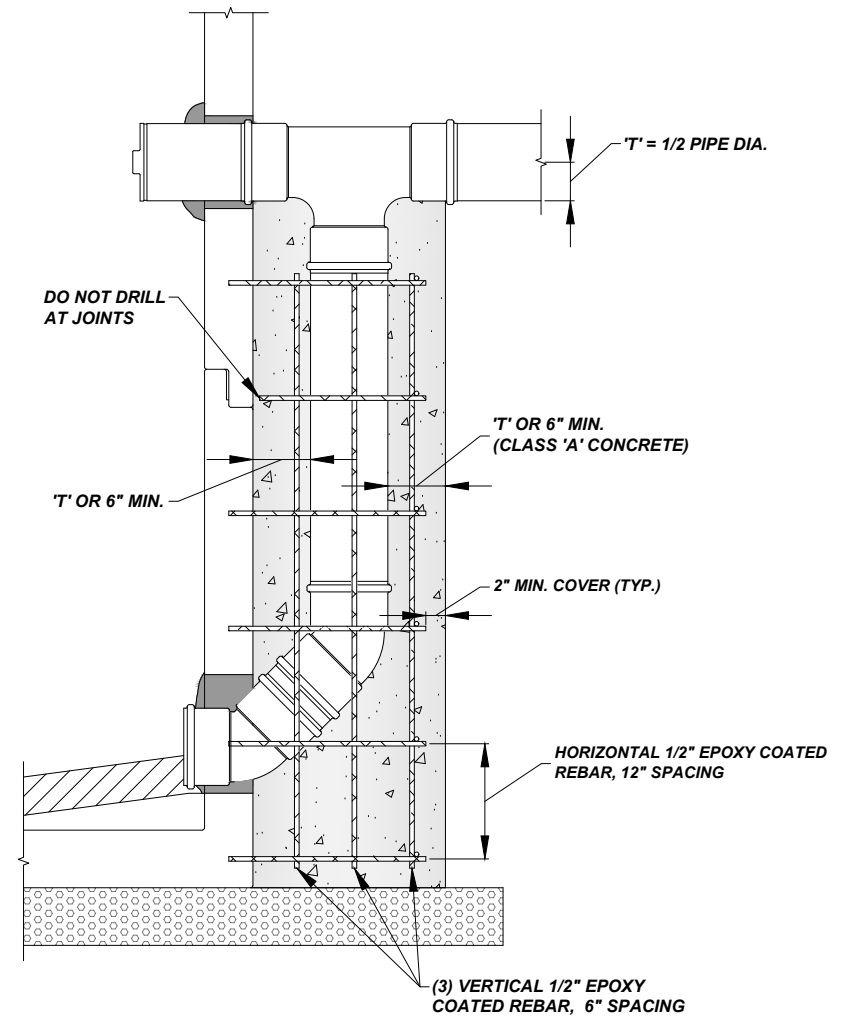
<i>Drafted By:</i>	<i>Approved By:</i>
J. Hoffman	D. Sailor, P.E.

Drawing Number:
SW-204



PLAN VIEW

EXTERIOR DROP MANHOLE REINFORCEMENT DETAIL



SECTION VIEW

The City Of Goshen
 Department of Public Works & Safety
 Office of Engineering

204 East Jefferson, Suite 1 Street, Goshen, Indiana 46528
 Phone: 574-534-2201 Fax: 574-533-8626
 Web: goshenindiana.org

Date Approved By The City Of Goshen Board Of Public Works & Safety and Approved Revisions

03/27/2025	07/24/2025				

CITY OF GOSHEN, INDIANA
STANDARD DETAIL

Drafted By: J. Hoffman
 Approved By: D. Sailor, P.E.
 Drawing Number: **SW-204**