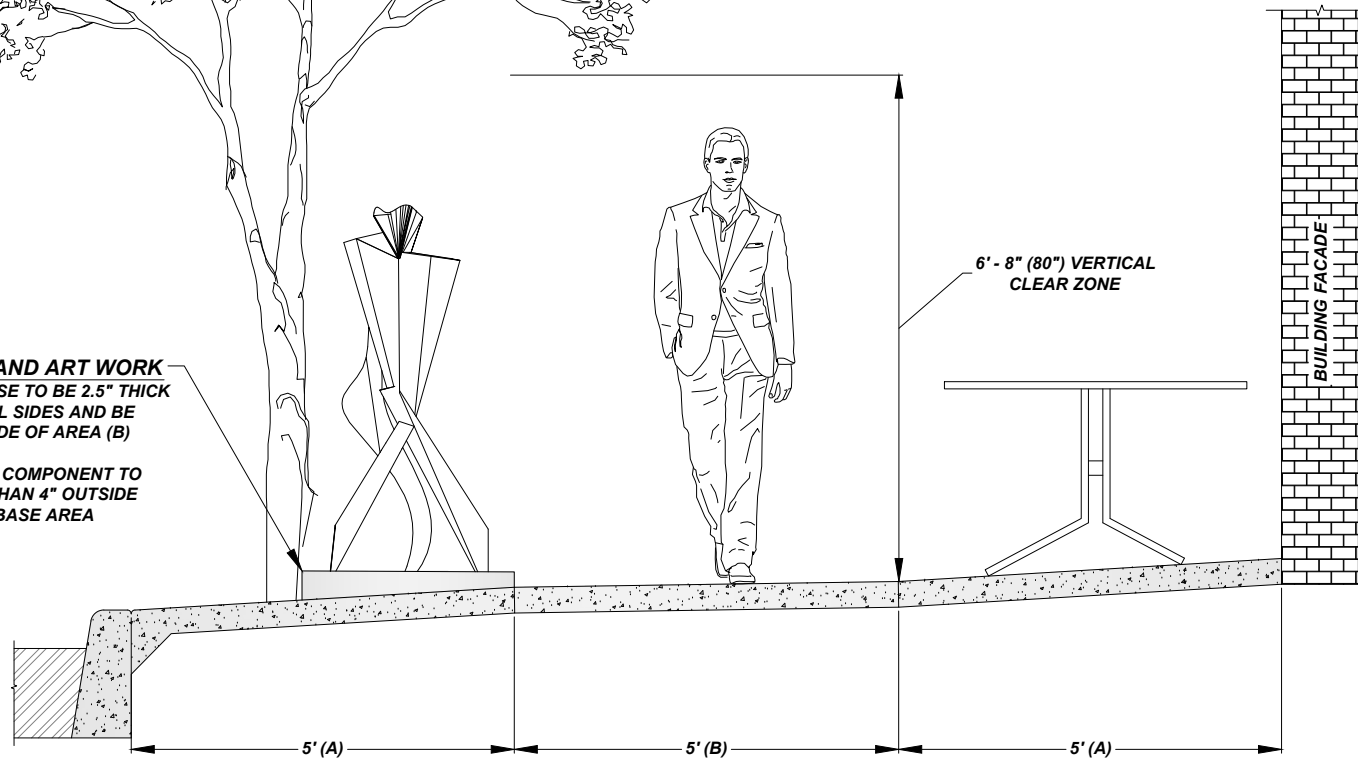




SIDEWALK ADA STANDARDS	
(A)	TRANSITION SIDEWALK (1:12 CROSS SLOPE FOR 6" MAX RISE) PLACEMENT OF ADA COMPLIANT SIGNAGE, LANDSCAPING, AND FURNITURE PERMITTED
(B)	ACCESSIBLE SIDEWALK (1:48 CROSS SLOPE) NO ENCROACHMENTS WITHIN THE ACCESSIBLE WALKING ROUTE
NOTE: PLACEMENTS SHALL COMPLY WITH PROWAG R402.3.1	

SCULPTURE AND ART WORK
 -SCULPTURE BASE TO BE 2.5" THICK (MIN.) ALONG ALL SIDES AND BE LOCATED OUTSIDE OF AREA (B)
 -NO SCULPTURE COMPONENT TO EXTEND MORE THAN 4" OUTSIDE OF SCULPTURE BASE AREA



DOWNTOWN ADA COMPLIANT SIDEWALK LAYOUT

NOT TO SCALE

The City Of Goshen
 Department of Public Works & Safety
 Office of Engineering

204 East Jefferson, Suite 1 Street, Goshen, Indiana 46528
 Phone: 574-534-2201 Fax: 574-533-8626
 Web: goshenindiana.org

Date Approved By The City Of Goshen Board Of Public Works & Safety and Approved Revisions

07/24/2025					

CITY OF GOSHEN, INDIANA
STANDARD DETAIL

Drafted By: J. Hoffman
 Approved By: D. Sailor, P.E.
 Drawing Number: **RD-105**