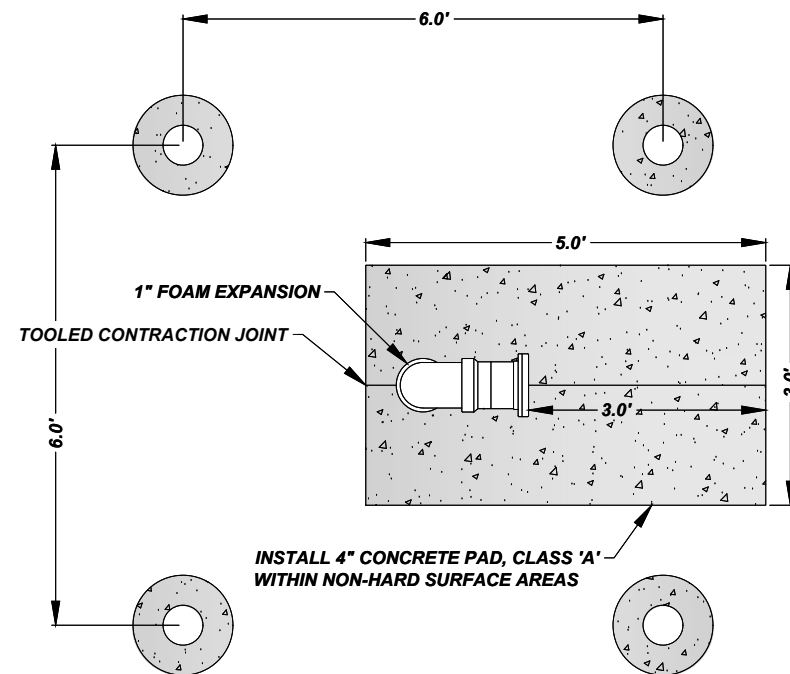


NOTE:

1. TYPICALLY, ONLY TWO BOLLARDS LOCATED AT THE FRONT ARE REQUIRED. FOUR BOLLARDS REQUIRED IF THE LOCATION WARRANTS (WITHIN PARKING AREAS WITH NO CURB AND/OR VEHICLES CAN MANEUVER AROUND THE FDC). CITY TO DETERMINE WHEN FOUR BOLLARDS ARE REQUIRED



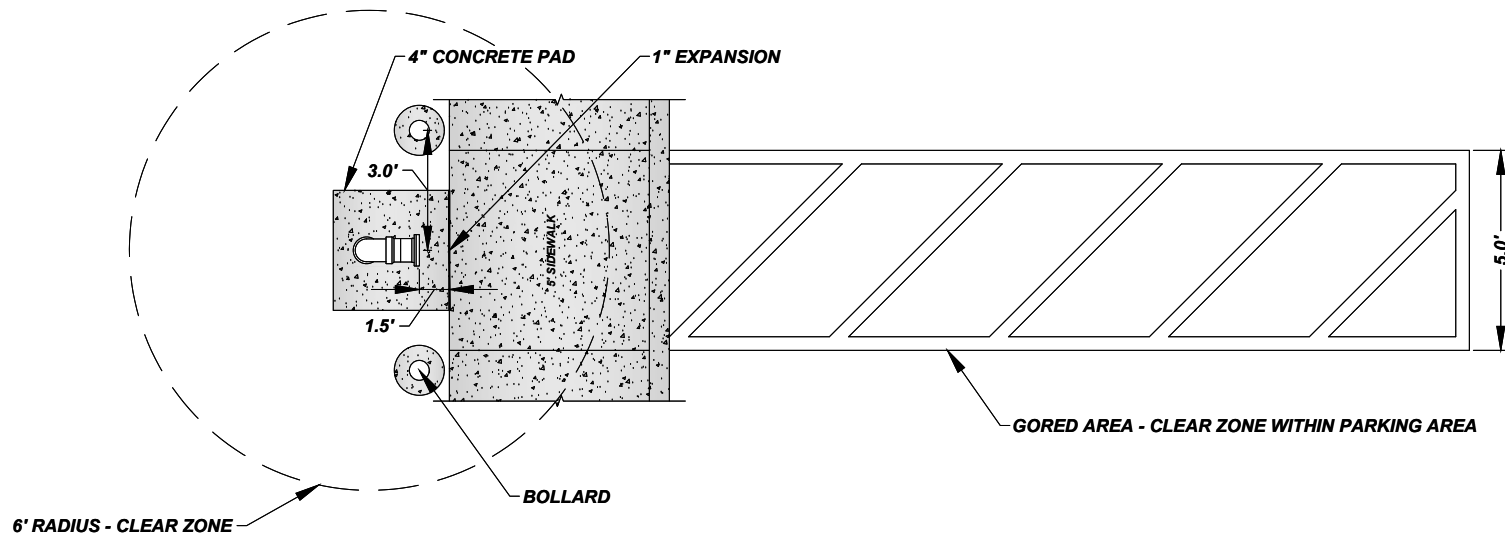
PLAN VIEW

NOTES:

1. ALL EXPOSED PIPING SHALL BE GALVANIZED
2. 5" STORZ ADAPTER AND CAP
3. 10" X 10" RED PLATE SIGN WITH WHITE LETTERING 'AUTO SPKR FIRE DEPT. CONNECTION' CONFORMING WITH NFPA REQUIREMENTS SECTION 912 FOR THE CLEAR IDENTIFICATION OF STANDPIPE CONNECTIONS

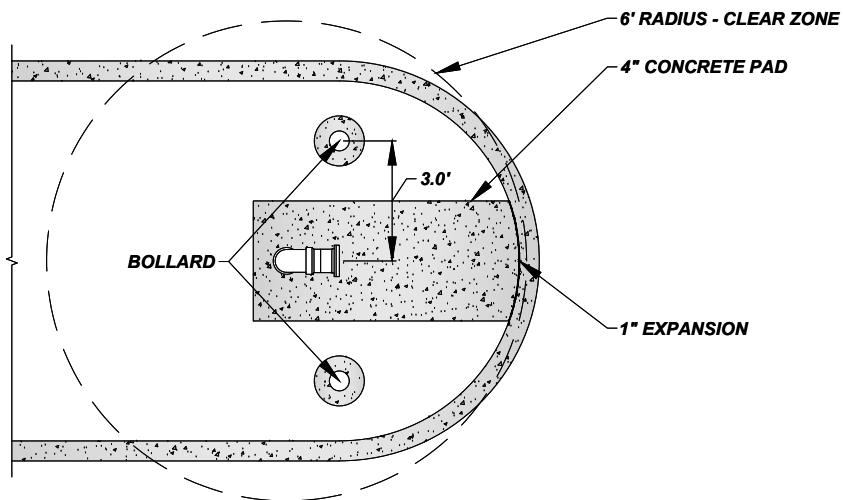
REMOTE FDC ASSEMBLY

NOT TO SCALE



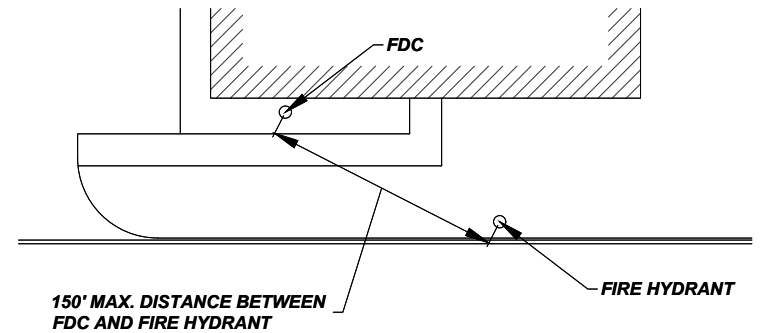
REMOTE FDC AT PARKING LOT

NOT TO SCALE



REMOTE FDC IN PARKING LOT ISLAND

NOT TO SCALE



NOTE:

1. IF THE FDC CANNOT BE POSITIONED WITHIN 150' OF A FIRE HYDRANT, AN ADDITIONAL FIRE HYDRANT WILL BE REQUIRED TO MEET THE REQUIREMENT

REMOTE FDC LOCATION

NOT TO SCALE