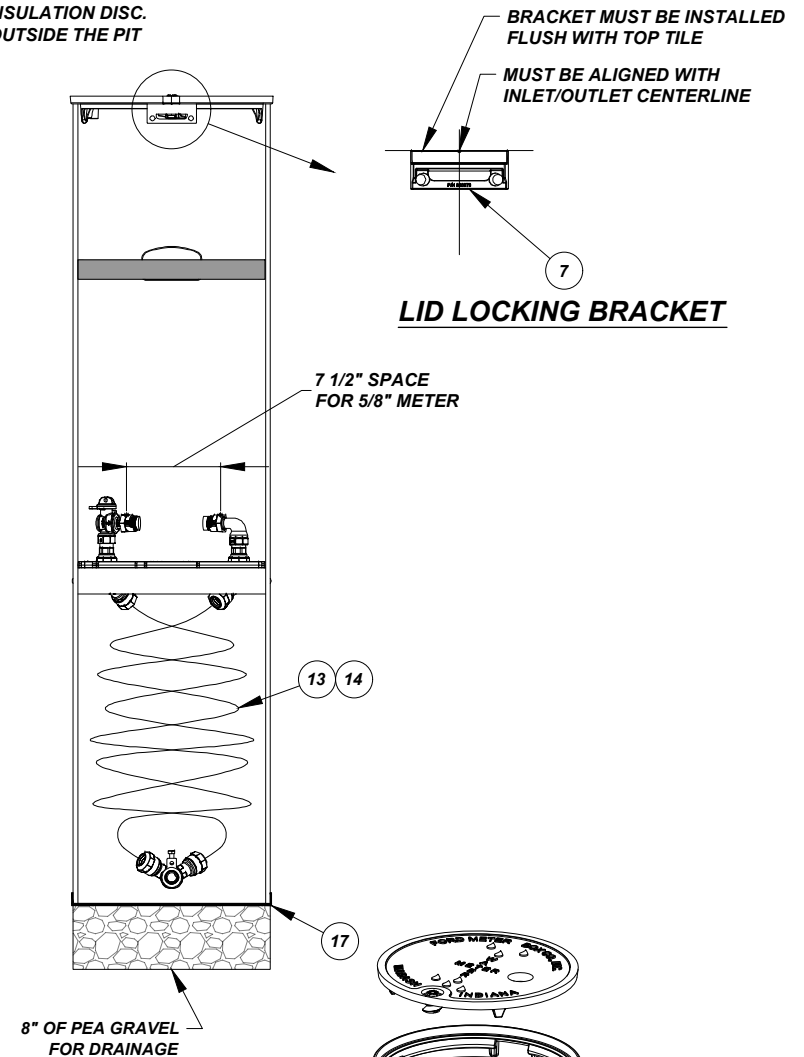


Detail and information from The Ford Meter Box Company, Inc., an equivalent product may be provided to the City of Goshen for approval

STRUCTURE DETAIL			
PIT DIAMETER AND DEPTH	LOWER MOUNTING BRACKET HEIGHT	MANUFACTURER	CATALOG NUMBER
15" X 60"	26"	THE FORD METER BOX, INC.	PFCBL-144-15-60-NA-TW-QNL

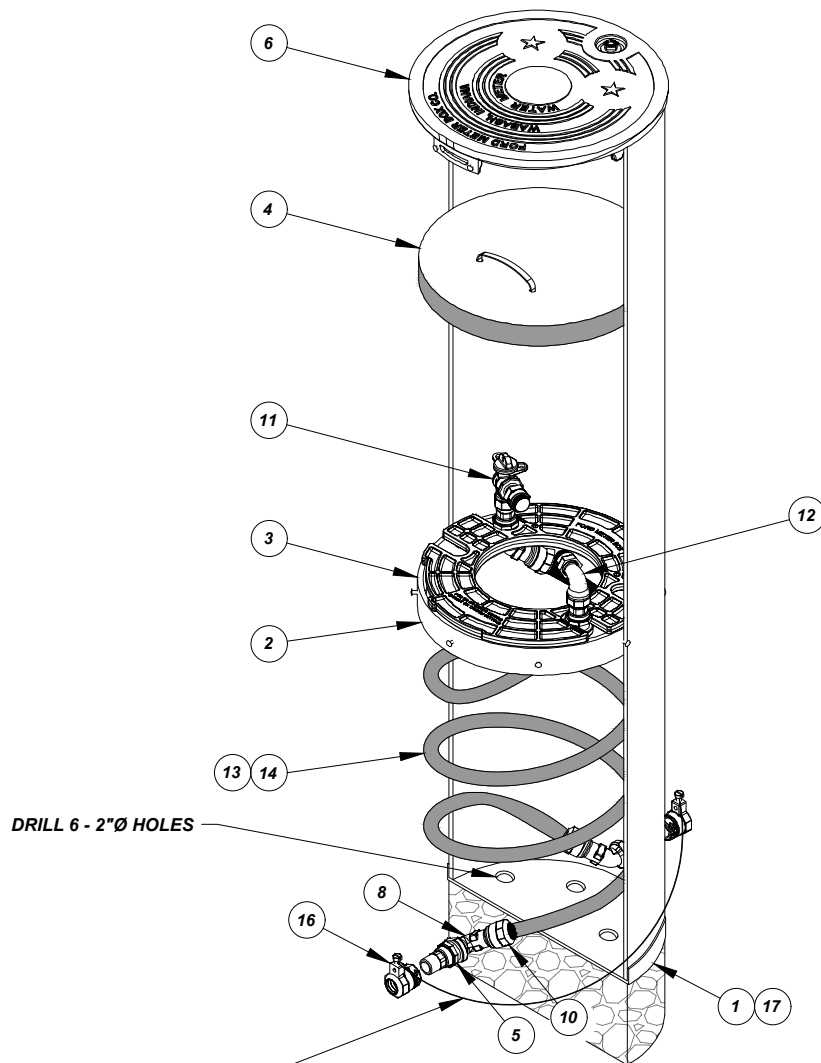
* The angle ball valve is a one way directional valve designed for the inlet side of the meter and should not be used as a customer shut-off on the customer side of the meter

PIT DEPTH	LOWER MOUNTING BRACKET HEIGHT
36"	14"
42"	20"
48"	26"
54"	26"
60"	26"
66"	26"
72"	26"
78"	26"
84"	26"
90"	26"
96"	26"



DOMESTIC WATER METER PIT

NOT TO SCALE



SECTION A-A

METER PIT PART LIST			
ITEM NO.	DESCRIPTION	QUANTITY	PART NUMBER
1	15" TILE (0.300 THICK WALL)	1	300372
2	LOWER PLATE STOP	1	CPS-INRSTOP-15-2
3	MOUNTING PLATE	1	PFCPLATE-300374
* 4	INSULATING DISK	1	CCID-15
5	NUT	2	YLN-2-001
* 6	LOCKING LID	1	PPSC-15-L-T
7	LID LOCKING BRACKET	2	PFCBRACKET-300373
8	60 DEGREE END PIECE	2	PSIOL84-33-60-002-NL
9	INSERT, 3/4" CTS #51 (NOT SHOWN)	4	INSERT-51
10	QUICK JOINT NUT	2	QJN4-3
11	70 DEGREE INLET ASSEMBLY	1	PC1-B-95663-003-NL
12	70 DEGREE OUTLET ASSEMBLY	1	PC1-L-95663-041-NL
13	3/4" COIL TUBE (OUTLET)	1	COILTUBE-300671
14	3/4" COIL TUBE (INLET)	1	COILTUBE-300675
15	METER GASKET	2	GT-108
16	COUPLING	2	C14-33-TW-Q-NL
17	SOLID PLASTIC BOTTOM PLATE	1	PPSBP-15-P
CASTING FOR HARD SURFACE AREAS			
* 18	15" FRAME/LID ASSEMBLY, LOCKING	1	A51H-T

* ORDERED SEPARATELY

° SHIPPED UNASSEMBLED

NOTES:

- ALL BRASS THAT COMES IN CONTACT WITH POTABLE WATER CONFORMS TO AWWA STANDARD C800 (ASTM B584, UNS C89833)
- LIGHTWEIGHT BODY IS MADE FROM 15" PVC TILE, PER ASTM D 2241
- 3/4" HDPE COIL TUBING, PER ASTM D 2737, SDR 9 CTS SIZED
- COIL COMPLIES WITH AWWA C901
- COIL IS NSF STANDARD 61 APPROVED
- COIL RATED AT 200 PSIG WORKING PRESSURE
- *FLAT CAST IRON LOCKING COVER, PER ASTM A48, CLASS 25 (PART NUMBER: PPSC-15-L-T, ORDERED SEPARATELY)