

NEENAH R-1772 W/ TYPE 'B' OR APPROVED EQUAL. INSTALL TOP OF CASTING 1/4" BELOW FINISHED PAVEMENT. FLUSH WITH FINISHED GRADE IN YARD/LANDSCAPED AREAS

USE 1/4" ROLLED BUTYL MASTIC ROPE BETWEEN CASTING AND RING, ONE ALONG INSIDE AND OUTSIDE EDGES WHEN POSSIBLE. FOR FINE ADJUSTMENT, A NON-SHRINK RAPID SETTING MORTAR, SPEED CRETE REDLINE OR SIMILAR APPROVED MATERIAL CAN BE USED, MAXIMUM OF 2" THICKNESS. NO SHIMS, BRICK OR CONCRETE UNDER CASTING

MAXIMUM 12" OF ADJUSTMENT, 2 OR FEWER RINGS. 2" AND THICKER PRE-CAST RINGS ONLY

USE 1/4" ROLLED BUTYL MASTIC ROPE BETWEEN STRUCTURE AND RINGS, ONE ALONG INSIDE AND OUTSIDE EDGE. CASTING AND RINGS MUST BE ALIGNED VERTICALLY AND HAVE NO CRACKS

PRE-CAST REINFORCED CONCRETE MANHOLE PER ASTM C-478

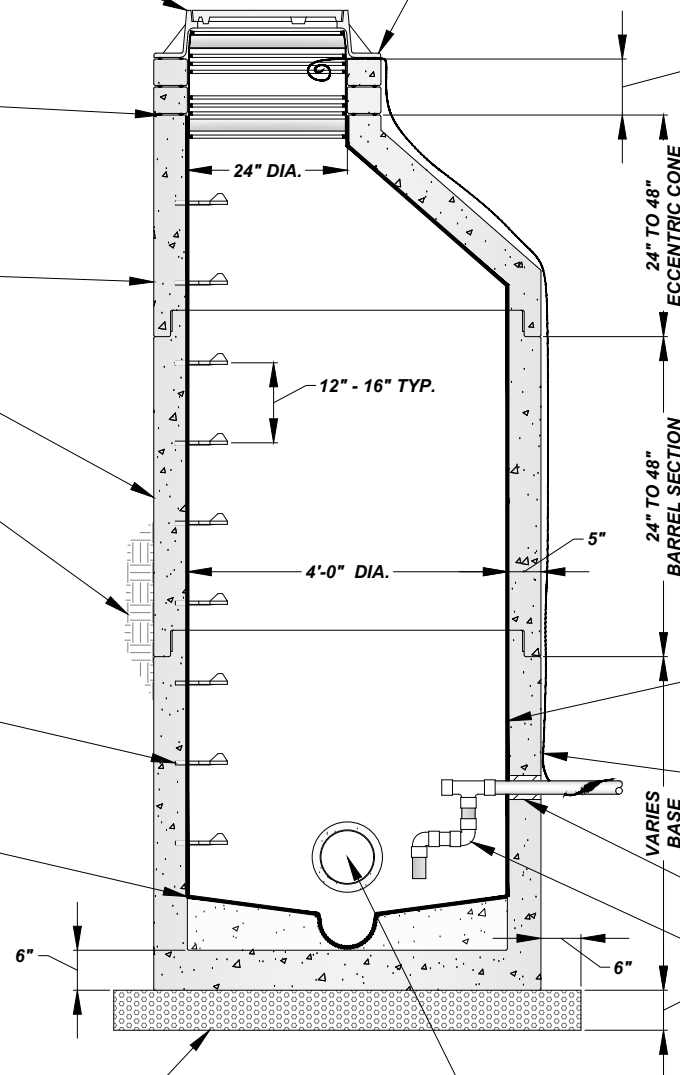
ALIGN RUNGS IN EACH STRUCTURE SECTION AND CONE OPENING

BACKFILL WITH B-BORROW OR APPROVED CLEAN SPOILS. COMPACT IN PROPER LIFTS BY MECHANICAL MEANS. IF UNABLE TO COMPACT BY MECHANICAL MEANS, PLACE No. 8 PEA GRAVEL BETWEEN EXCAVATION WALL AND STRUCTURE

COPOLYMER POLYPROPYLENE PLASTIC RUNGS WITH 1/2" GRADE 60 REINFORCING STEEL

PRECAST INVERT AND BENCH

No. 8 AGGREGATE, MAYBE ELIMINATED BY ENGINEER IF CONDITIONS DO NOT WARRANT THE 6" OF BASE MATERIAL



#### NOTES:

1. ALL STRUCTURES MUST BE INSPECTED BY A CITY REPRESENTATIVE PRIOR TO INSTALLATION. STRUCTURES WILL BE REJECTED IF REINFORCING STEEL IS EXPOSED, EXCESSIVE VOIDS ARE OBSERVED IN THE CONCRETE, DAMAGE TO CONCRETE EDGES BETWEEN SECTIONS AND ANY OTHER ITEM THAT MAY COMPROMISE THE STRUCTURE

EPOXY COAT INTERIOR OF EXISTING SANITARY MANHOLE, SUBMIT MANUFACTURER'S DATA FOR APPROVAL BY THE CITY OF GOSHEN ENGINEERING DEPARTMENT PRIOR TO APPLYING

(2) TRACER WIRES (GREEN) TO BE COPPERHEAD SOLOSHOT 1245 OR APPROVED EQUAL. RUN ALONG OUTSIDE OF STRUCTURE. BRING INTO STRUCTURE UNDER CASTING, LEAVE A 2' LONG COIL

CORE EXISTING MANHOLE AND INSTALL FORCE MAIN WITH LINK SEAL OR APPROVED EQUAL

2" - SCH-80 TEE AND TREADED CAP  
2" - 90° SCH-80 BEND  
2" - 90° SCH-80 BEND, ROTATE TO ALIGN WITH GRAVITY CHANNEL  
2" - SCH-80 PIPE STUB

BOOTS REQUIRED FOR ALL PIPE CONNECTIONS. AN INVERT INSTALLED IN THE FIELD MUST BE CORED AND BOOT INSTALLED. SEAL THE GAP BETWEEN THE PIPE AND BOOT WITH A NON-SHRINK RAPID SETTING MORTAR, SPEED CRETE REDLINE OR APPROVED. EXTEND PIPE 6" BEYOND INSIDE WALL FACE IF ABOVE PRECAST INVERT AND BENCH

## SANITARY MANHOLE FORCE MAIN CONNECTION

NOT TO SCALE