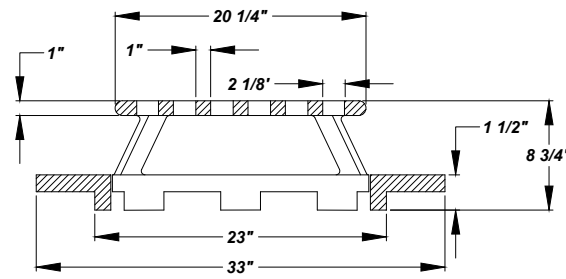
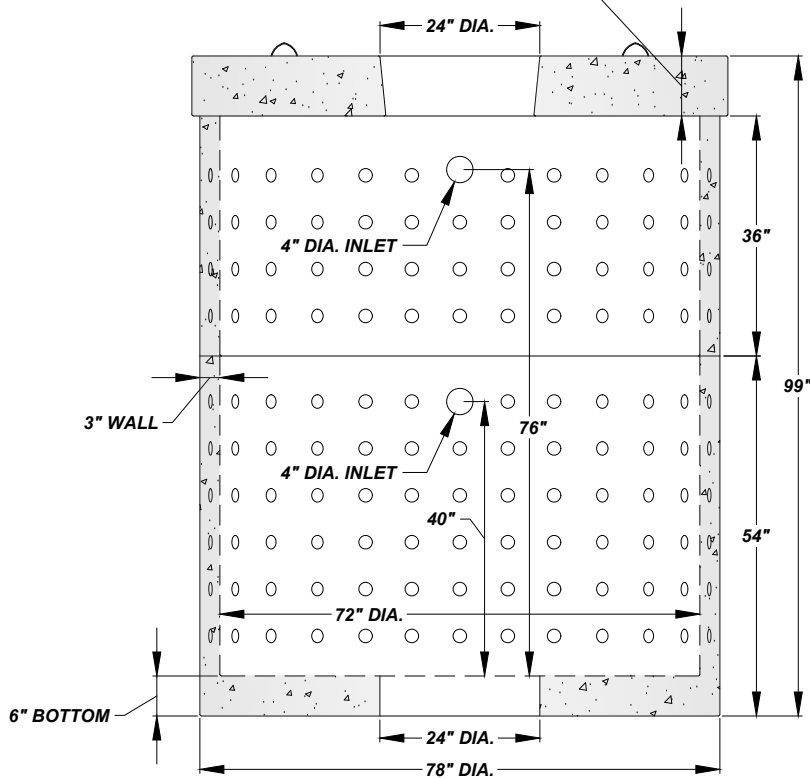
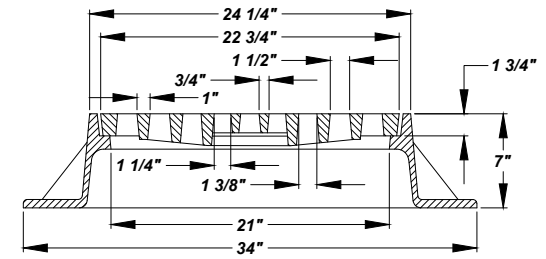


9" TRAFFIC RATED REINFORCED LID
6" NON-TRAFFIC RATED REINFORCED LID



DITCH/DRYWELL CASTING DETAIL
NEENAH R-4341-A



STORM FLAT ROUND GRATE CASTING DETAIL
NEENAH R-1772 W/ TYPE 'D'

NOTE:

1. INCLUDE STREAM WARNING

NOTES:

1. DRYWELL IS CONCRETE AND REINFORCED WITH #2 REBAR AND 1.5" FIBRILLATED POLYPROPYLENE FIBER
2. WALLS ARE 3" THICK CONCRETE
3. LID: 9" REINFORCED WITH #4 REBAR AND 1.5" FIBRILLATED POLYPROPYLENE FIBER
6" REINFORCED WITH #4 REBAR AND 1.5" FIBRILLATED POLYPROPYLENE FIBER
4. BASE IS MONOLITHICALLY POURED INTO BOTTOM OF THE DRYWELL
5. 4,500 PSI TO 5,000 PSI CONCRETE
6. WEIGHTS: LID(9") = 3,500 LBS, RING = 1,900 LBS, RING W/ BASE = 3,400 LBS
7. INSTALL 6" CONCRETE ADJUSTING RING UNDER CASTING TO ALLOW FOR TOPSOIL AND GRASS SEED OUTSIDE HARD SURFACE AREAS. INSTALL PER STORM/SANITARY MANHOLE DETAIL WITHIN HARD SURFACE AREAS. USE 1/4" ROLLED MASTIC ROPE BETWEEN CASTING AND ADJUSTING RING OR A NON-SHRINK RAPID SETTING MORTAR, SPEED CRETE RED LINE OR SIMILAR APPROVED MATERIAL WITH A MAXIMUM OF 1" THICKNESS. NO SHIMS, BRICK, OR BLOCKING SHALL BE PLACED

NOTE:

1. ALL STRUCTURES MUST BE INSPECTED BY A CITY REPRESENTATIVE PRIOR TO INSTALLATION. STRUCTURES WILL BE REJECTED IF REINFORCING STEEL IS EXPOSED, EXCESSIVE VOIDS ARE OBSERVED IN THE CONCRETE, DAMAGE TO CONCRETE EDGES BETWEEN SECTIONS AND ANY OTHER ITEM THAT MAY COMPROMISE THE STRUCTURE

1,500 GAL. DRYWELL WITH BASE

NOT TO SCALE