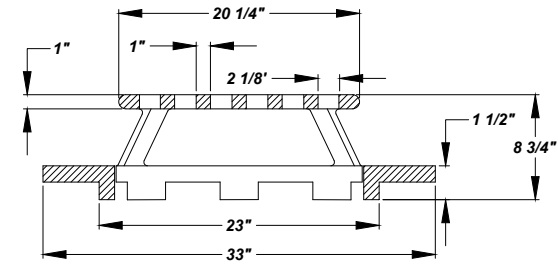
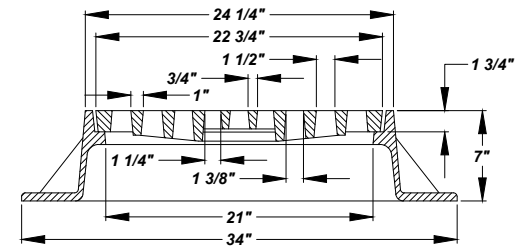


NOTES:

1. DRYWELL IS CONCRETE AND REINFORCED WITH #2 REBAR AND 1.5" FIBRILLATED POLYPROPYLENE FIBER
2. WALLS ARE 3" THICK CONCRETE
3. LID: 9" REINFORCED WITH #4 REBAR AND 1.5" FIBRILLATED POLYPROPYLENE FIBER
6" REINFORCED WITH #4 REBAR AND 1.5" FIBRILLATED POLYPROPYLENE FIBER
4. BASE IS MONOLITHICALLY POURED INTO BOTTOM OF THE DRYWELL
5. 4,500 PSI TO 5,000 PSI CONCRETE
6. WEIGHTS: LID(9") = 3,500 LBS, RING = 3,400 LBS
7. INSTALL 6" CONCRETE ADJUSTING RING UNDER CASTING TO ALLOW FOR TOPSOIL AND GRASS SEED OUTSIDE HARD SURFACE AREAS. INSTALL PER STORM/SANITARY MANHOLE DETAIL WITHIN HARD SURFACE AREAS. USE 1/4" ROLLED MASTIC ROPE BETWEEN CASTING AND ADJUSTING RING OR A NON-SHRINK RAPID SETTING MORTAR, SPEED CRETE RED LINE OR SIMILAR APPROVED MATERIAL WITH A MAXIMUM OF 1" THICKNESS. NO SHIMS, BRICK, OR BLOCKING SHALL BE PLACED



DITCH/DRYWELL CASTING DETAIL
NEENAH R-4341-A



STORM FLAT ROUND GRATE CASTING DETAIL
NEENAH R-1772 W/ TYPE 'D'

NOTE:

1. ALL STRUCTURES MUST BE INSPECTED BY A CITY REPRESENTATIVE PRIOR TO INSTALLATION. STRUCTURES WILL BE REJECTED IF REINFORCING STEEL IS EXPOSED, EXCESSIVE VOIDS ARE OBSERVED IN THE CONCRETE, DAMAGE TO CONCRETE EDGES BETWEEN SECTIONS AND ANY OTHER ITEM THAT MAY COMPROMISE THE STRUCTURE

900 GAL. DRYWELL WITH BASE

NOT TO SCALE

The City Of Goshen
Department of Public Works & Safety
Office of Engineering

204 East Jefferson, Suite 1 Street, Goshen, Indiana 46528
Phone: 574-534-2201 Fax: 574-533-8626
Web: goshenindiana.org

Date Approved By The City Of Goshen Board Of Public Works & Safety and Approved Revisions

03/27/2025

CITY OF GOSHEN, INDIANA
STANDARD DETAIL

Drafted By: J. Hoffman
Approved By: D. Sailor, P.E.

Drawing Number:
SW-303