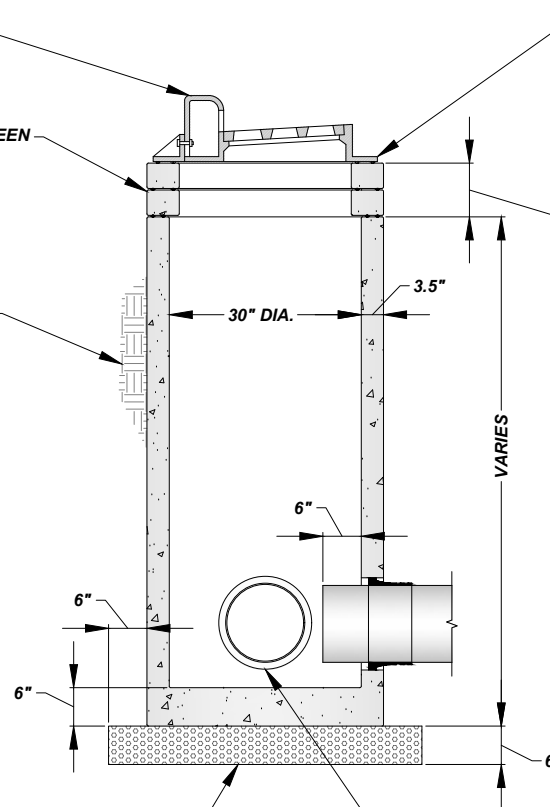


NEENAH R-3070 W/ TYPE 'R' LID
OR APPROVED EQUAL. INSTALL
TOP OF CASTING 1/4" BELOW
FINISHED PAVEMENT

USE 1/4" ROLLED MASTIC ROPE BETWEEN
STRUCTURE AND RINGS, ONE ALONG
INSIDE AND OUTSIDE EDGE. CASTING
AND RINGS MUST BE ALIGNED
VERTICALLY AND HAVE NO CRACKS
(2.0" MAXIMUM HORIZONTAL OFFSET
ALLOWED IF PRE-APPROVED)

BACKFILL WITH B-BORROW OR
APPROVED CLEAN SPOILS.
COMPACT IN PROPER LIFTS BY
MECHANICAL MEANS. IF UNABLE TO
COMPACT BY MECHANICAL MEANS,
PLACE No. 8 PEA GRAVEL BETWEEN
EXCAVATION WALL AND STRUCTURE



USE 1/4" ROLLED MASTIC ROPE BETWEEN CASTING
AND RING, ONE ALONG INSIDE AND OUTSIDE EDGES
WHEN POSSIBLE. FOR FINE ADJUSTMENT, A
NON-SHRINK RAPID SETTING MORTAR, SPEED
CRETE REDLINE OR SIMILAR APPROVED MATERIAL
CAN BE USED, MAXIMUM OF 2" THICKNESS. NO
SHIMS, BRICK OR CONCRETE UNDER CASTING

MAXIMUM 12" OF ADJUSTMENT, 2 OR FEWER RINGS.
2" AND THICKER PRE-CAST RINGS ONLY

NOTES:

1. ALL STRUCTURES MUST BE INSPECTED BY A
CITY REPRESENTATIVE PRIOR TO
INSTALLATION. STRUCTURES WILL BE
REJECTED IF REINFORCING STEEL IS EXPOSED,
EXCESSIVE VOIDS ARE OBSERVED IN THE
CONCRETE, DAMAGE TO CONCRETE EDGES
BETWEEN SECTIONS AND ANY OTHER ITEM
THAT MAY COMPROMISE THE STRUCTURE
2. 30" DIA. STRUCTURE SUITABLE UP TO A SINGLE
15" DIA. PIPE
3. 30" DIA. STRUCTURE SUITABLE UP TO TWO 12"
DIA. PIPES AT 90° TO EACH OTHER
4. PIPES LARGER THAN 15" DIA. REQUIRE A
SEWER MANHOLE STRUCTURE

No. 8 AGGREGATE, MAYBE ELIMINATED BY ENGINEER IF
CONDITIONS DO NOT WARRANT THE 6" OF BASE MATERIAL

BOOTS ARE NOT REQUIRED FOR STORM PIPE CONNECTIONS. SEAL GAP BETWEEN THE
PIPE/STRUCTURE OR INSIDE OF BOOT WITH A NON-SHRINK RAPID SETTING MORTAR, SPEED
CRETE RED LINE OR APPROVED. EXTEND STORM PIPE 6" BEYOND INSIDE WALL FACE. AN
INVERT INSTALLED IN THE FIELD MUST BE CORED, NO HAND CUT INVERTS ALLOWED

SEWER INLET (TYPE N) - CURB CASTING

NOT TO SCALE

The City Of Goshen
Department of Public Works & Safety
Office of Engineering

204 East Jefferson, Suite 1 Street, Goshen, Indiana 46528
Phone: 574-534-2201 Fax: 574-533-8626
Web: goshenindiana.org

Date Approved By The City Of Goshen Board Of Public Works & Safety and Approved Revisions

03/27/2025

CITY OF GOSHEN, INDIANA
STANDARD DETAIL

Drafted By: J. Hoffman
Approved By: D. Sailor, P.E.

Drawing Number:
SW-214