

NEENAH R-1772 W/ TYPE 'B' LID OR APPROVED EQUAL. INSTALL TOP OF CASTING 1/4" BELOW FINISHED PAVEMENT

USE 1/4" ROLLED MASTIC ROPE BETWEEN CASTING AND RING, ONE ALONG INSIDE AND OUTSIDE EDGES WHEN POSSIBLE. FOR FINE ADJUSTMENT, A NON-SHRINK RAPID SETTING MORTAR, SPEED CRETE REDLINE OR SIMILAR APPROVED MATERIAL CAN BE USED, MAXIMUM OF 2" THICKNESS. NO SHIMS, BRICK OR CONCRETE UNDER CASTING

USE 1/4" ROLLED MASTIC ROPE BETWEEN STRUCTURE AND RINGS, ONE ALONG INSIDE AND OUTSIDE EDGE. CASTING AND RINGS MUST BE ALIGNED VERTICALLY AND HAVE NO CRACKS (2.0" MAXIMUM HORIZONTAL OFFSET ALLOWED IF PRE-APPROVED)

MAXIMUM 12" OF ADJUSTMENT, 2 OR FEWER RINGS. 2" AND THICKER PRE-CAST RINGS ONLY

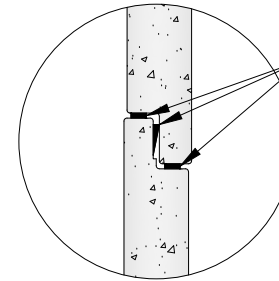
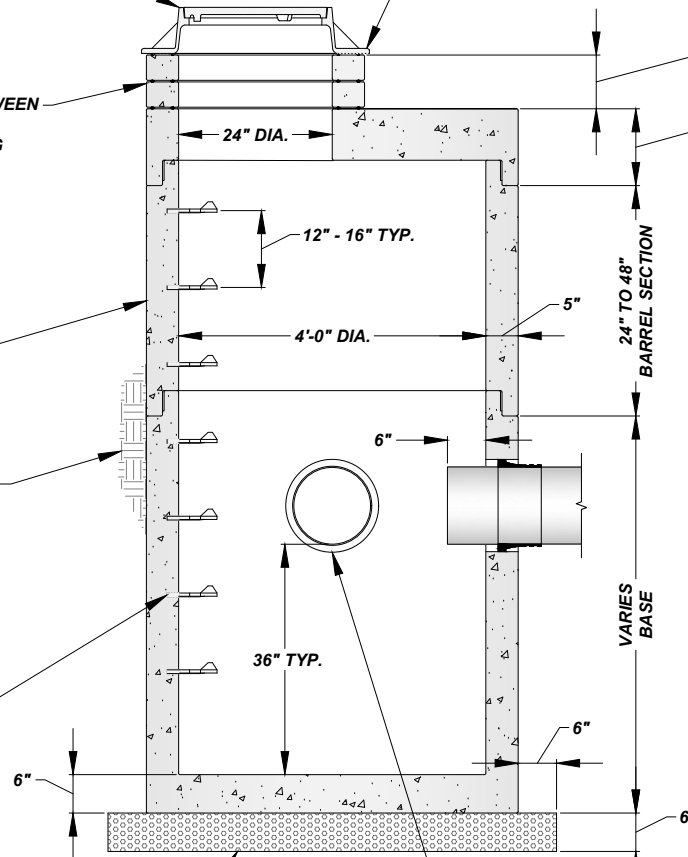
ALIGN RUNGS IN EACH STRUCTURE SECTION AND OPENING

BACKFILL WITH B-BORROW OR APPROVED CLEAN SPOILS. COMPACT IN PROPER LIFTS BY MECHANICAL MEANS. IF UNABLE TO COMPACT BY MECHANICAL MEANS, PLACE No. 8 PEA GRAVEL BETWEEN EXCAVATION WALL AND STRUCTURE

COPOLYMER POLYPROPYLENE PLASTIC RUNGS WITH 1/2" GRADE 60 REINFORCING STEEL

No. 8 AGGREGATE, MAYBE ELIMINATED BY ENGINEER IF CONDITIONS DO NOT WARRANT THE 6" OF BASE MATERIAL

BOOTS ARE NOT REQUIRED FOR STORM PIPE CONNECTIONS. SEAL GAP BETWEEN THE PIPE/STRUCTURE OR INSIDE OF BOOT WITH A NON-SHRINK RAPID SETTING MORTAR, SPEED CRETE RED LINE OR APPROVED. EXTEND STORM PIPE 6" BEYOND INSIDE WALL FACE. AN INVERT INSTALLED IN THE FIELD MUST BE CORED, NO HAND CUT INVERTS ALLOWED



SECTIONS MAY BE SEALED WITH THE MANUFACTURER'S SUPPLIED GASKET OR MASTIC PLACED ON THE UPPER AND LOWER EDGES OF STRUCTURE

NOTE:

1. ALL STRUCTURES MUST BE INSPECTED BY A CITY REPRESENTATIVE PRIOR TO INSTALLATION. STRUCTURES WILL BE REJECTED IF REINFORCING STEEL IS EXPOSED, EXCESSIVE VOIDS ARE OBSERVED IN THE CONCRETE, DAMAGE TO CONCRETE EDGES BETWEEN SECTIONS AND ANY OTHER ITEM THAT MAY COMPROMISE THE STRUCTURE

SEWER CATCH BASIN (TYPE M) - FLAT TOP W/ MANHOLE CASTING

NOT TO SCALE

The City Of Goshen
Department of Public Works & Safety
Office of Engineering

204 East Jefferson, Suite 1 Street, Goshen, Indiana 46528
Phone: 574-534-2201 Fax: 574-533-8626
Web: goshenindiana.org

Date Approved By The City Of Goshen Board Of Public Works & Safety and Approved Revisions

03/27/2025					
------------	--	--	--	--	--

CITY OF GOSHEN, INDIANA
STANDARD DETAIL

Drafted By: J. Hoffman	Approved By: D. Sailor, P.E.
Drawing Number: SW-213	