

NOTES:

1. 4" PLAIN END INLET/OUTLET
2. FIELD MODIFIABLE TO 6" PLAIN END INLET/OUTLET
3. UNIT WEIGHT - 9 LBS.
4. MAXIMUM OPERATING TEMPERATURE: 150° F CONTINUOUS
5. OFFSET CONNECTIONS
6. 2 ROLLS OF 33" X 2" BUTYL MASTIC TAPE PROVIDED FOR SEALING BUILD-YOUR-OWN RISER JOINTS

ENGINEERING SPECIFICATION GUIDE:

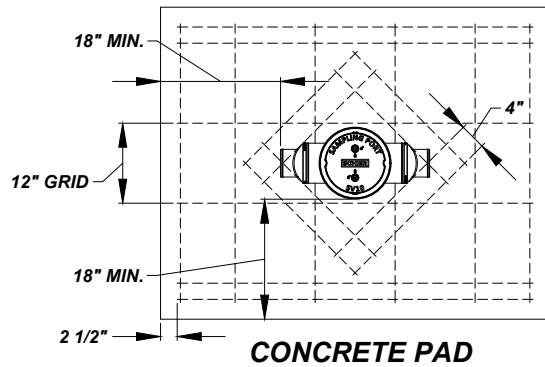
SCHIER SEWER VIEWER SAMPLING PORT MODEL# SV 10 SHALL BE LIFETIME GUARANTEED AND MADE IN USA OF SEAMLESS, ROTATIONALLY-MOLDED POLYETHYLENE. SAMPLING PORT SHALL BE FURNISHED FOR ABOVE OR BELOW GRADE INSTALLATION. COVER SHALL PROVIDE WATER/GAS-TIGHT SEAL AND HAVE MINIMUM 16,000 LBS. LOAD CAPACITY

ACCESSORIES:

FIELD CUT RISER FOR EXTENDING COVER TO GRADE

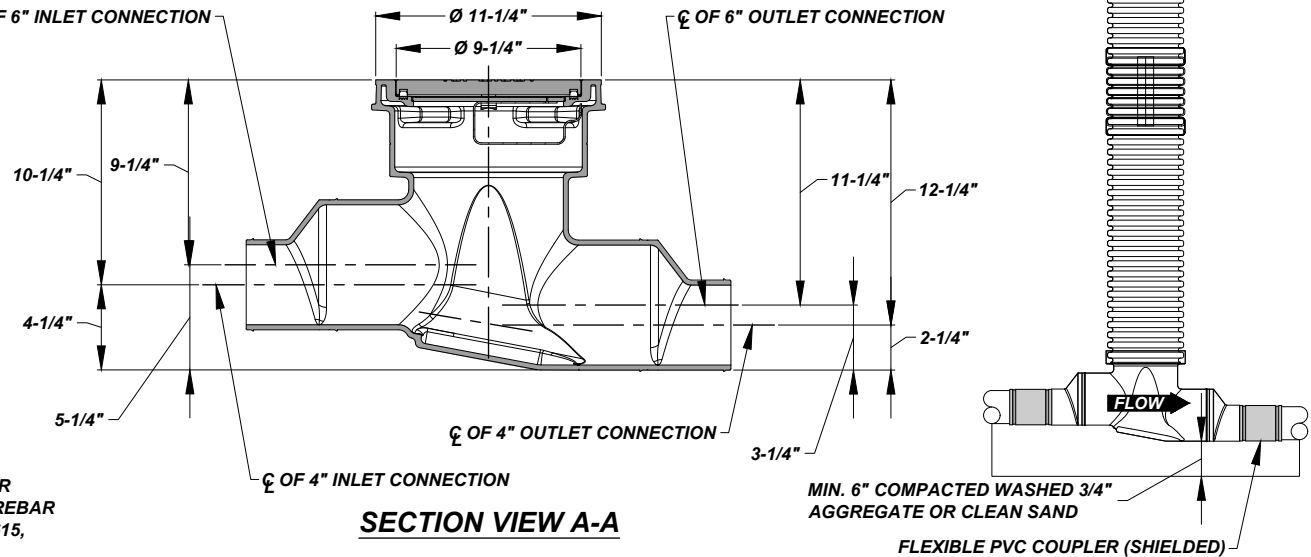
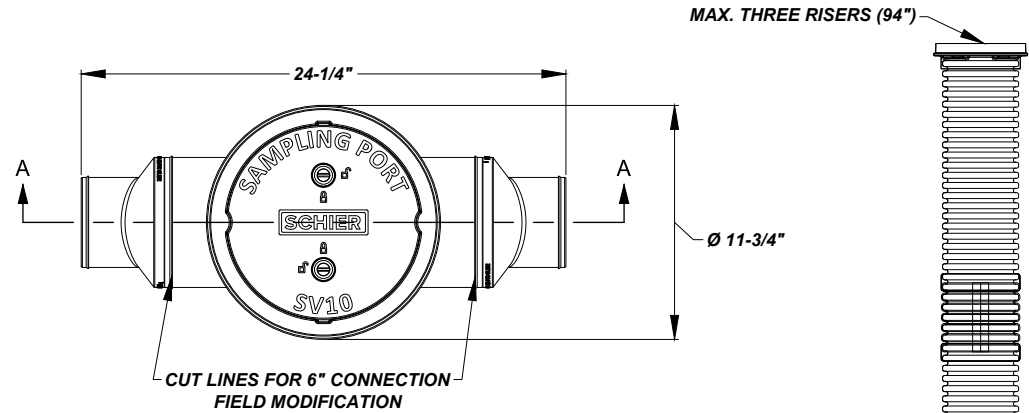
PRODUCT AND INSTALLATION DETAIL SOURCE:

WWW.SCHIERPRODUCTS.COM



NOTES:

1. VEHICULAR TRAFFIC AREA - MIN. 8" W/ REBAR
PEDESTRIAN OR GREENSPACE - MIN. 4" W/ REBAR
2. NO. 4 REBAR, GRADE 60 STEEL PER ASTM A615, CONNECTED WITH TIE WIRE
3. CONCRETE, 4,000 PSI COMPRESSIVE STRENGTH AT 28 DAYS



SCHIER SV 10 SEWER VIEWER SAMPLING PORT (TYPE G)

NOT TO SCALE