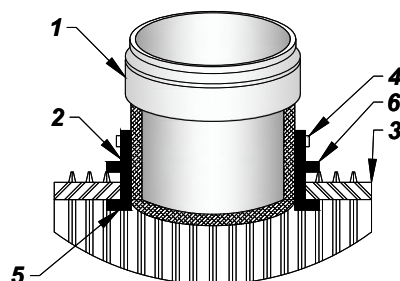
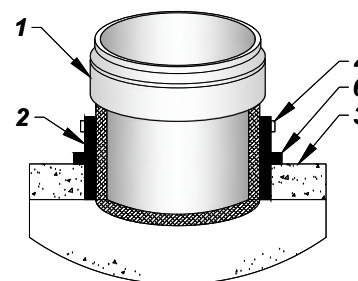


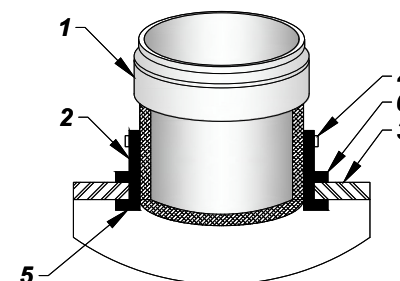
**ADS PIPE**  
(WITH PERMISSION)



**PROFILE WALL**  
(WITH PERMISSION)



**CONCRETE OR CLAY**



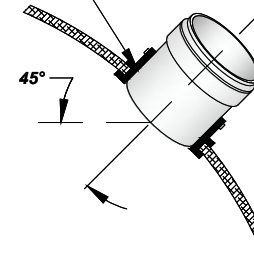
**SOLID WALL**

PART #	DESCRIPTION
1	PVC HUB ADAPTER WHICH IS DRIVEN INTO THE CENTER OF THE RUBBER SLEEVE AFTER THE RUBBER SLEEVE IS IN THE HOLE
2	COMPLETE RUBBER SLEEVE CONSISTING OF ASTM F 477 SPECIFICATIONS
3	MAINLINE PIPE WALL WHERE BRANCH LINE IS CONNECTED
4	STAINLESS STEEL BAND, PUT ON ABOVE RUBBER SEGMENT AS AN ADDED PRECAUTION
5	RUBBER SEGMENT WHICH IS MOLDED INTO THE RUBBER SLEEVE. THIS PREVENTS SNAP OUT ON THE INSIDE OF THE DRILLED HOLE (PLASTIC PIPE ONLY) AND HELPS HOLD THE FITTING IN PLACE, NOT CREATING THE SEAL
6	RUBBER SEGMENT WHICH IS MOLDED INTO THE RUBBER SLEEVE. THIS PREVENTS THE RUBBER SLEEVE FROM GOING THROUGH THE DRILLED HOLE WHEN PVC HUB IS BEING DRIVEN INTO THE RUBBER SLEEVE

**NOTES:**

1. WATERTIGHT SEAL IS ACCOMPLISHED WHEN PVC HUB IS DRIVEN INTO RUBBER SLEEVE CAUSING THE RUBBER SLEEVE TO COMPRESS BETWEEN PIPE WALL AND PVC HUB
2. BACKFILL AROUND TEE WITH PEA STONE OR No. 8 AGGREGATE STONE TO PREVENT DAMAGE
4. DETAIL SHOWS ROMAC BRAND. OTHER MANUFACTURERS MAY BE ACCEPTED BY CITY ENGINEERING DEPARTMENT UPON REVIEW OF MANUFACTURER'S SUBMITTAL

USE HOLE SAW, AT  
MANUFACTURERS  
SUGGESTED DIA.



**INSERTA TEE (18" DIA. OR LARGER PIPE)**

NOT TO SCALE

*The City Of Goshen*  
Department of Public Works & Safety  
Office of Engineering

204 East Jefferson, Suite 1 Street, Goshen, Indiana 46528  
Phone: 574-534-2201 Fax: 574-533-8626  
Web: goshenindiana.org

Date Approved By The City Of Goshen Board Of Public Works & Safety and Approved Revisions

03/27/2025

**CITY OF GOSHEN, INDIANA**  
**STANDARD DETAIL**

Drafted By: J. Hoffman  
Approved By: D. Sailor, P.E.

Drawing Number:  
**SW-118**