

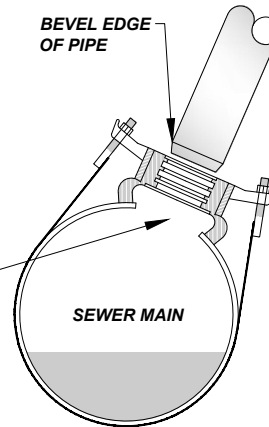
NOTES:

1. BOLTS, NUTS AND WASHERS, 1/2" UNC ROLL THREAD TEFLON COATED
2. 3 1/2" WIDE BAND FOR SPREADING OUT CLAMP FORCE ON PIPE
3. THE STAINLESS WELDS ARE FULLY PASSIVATED
4. EXCESS STRAP GOES BETWEEN PIPE AND BAND



**STAINLESS STEEL 304
ADJUSTABLE STRAP**

OPENING SHALL NOT BE LARGER
THAN COMPRESSED GASKET
OPENING. FOLLOW THE
MANUFACTURER'S REQUIREMENTS



SEWER SADDLE CONFORMING TO PIPE

NOTES:

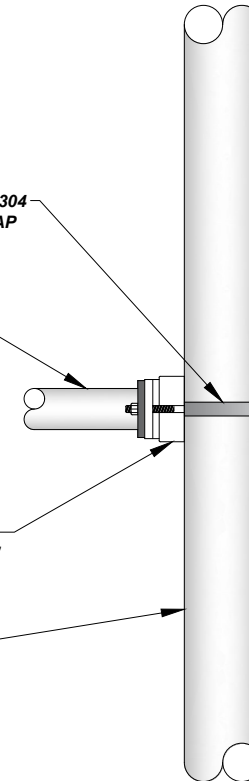
1. PIPE TO BE TAPPED USING A HOLE SAW OR APPROVED EQUAL, HOLES SHALL NOT BE LARGER THAN THE INSIDE HOLE OF THE GASKET
2. INSERTION TEES ARE NOT ALLOWED ON PIPE 18 INCH OR LESS IN DIAMETER UNLESS APPROVED BY THE CITY
3. LATERAL PIPE SHALL NOT PROTRUDE BEYOND INTERIOR WALL OF THE MAIN LINE
4. DETAIL SHOWS ROMAC BRAND. OTHER MANUFACTURERS MAY BE ACCEPTED BY CITY ENGINEERING DEPARTMENT UPON REVIEW OF MANUFACTURER'S SUBMITTAL

STAINLESS STEEL 304
ADJUSTABLE STRAP

SEWER LATERAL

SEWER SADDLE,
ROMAC STYLE 'CB'

SEWER MAIN



ROMAC 'CB' SEWER SADDLE

NOT TO SCALE

The City Of Goshen
Department of Public Works & Safety
Office of Engineering

204 East Jefferson, Suite 1 Street, Goshen, Indiana 46528
Phone: 574-534-2201 Fax: 574-533-8626
Web: goshenindiana.org

Date Approved By The City Of Goshen Board Of Public Works & Safety and Approved Revisions

03/27/2025					

**CITY OF GOSHEN, INDIANA
STANDARD DETAIL**

Drafted By: J. Hoffman	Approved By: D. Sailor, P.E.
Drawing Number: SW-117	