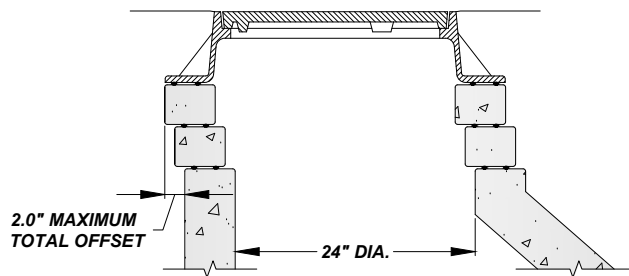


NEENAH R-1772 W/ TYPE 'B' LID WORD 'STORM'
ON LID OR APPROVED EQUAL. INSTALL TOP
OF CASTING 1/4" BELOW FINISHED PAVEMENT

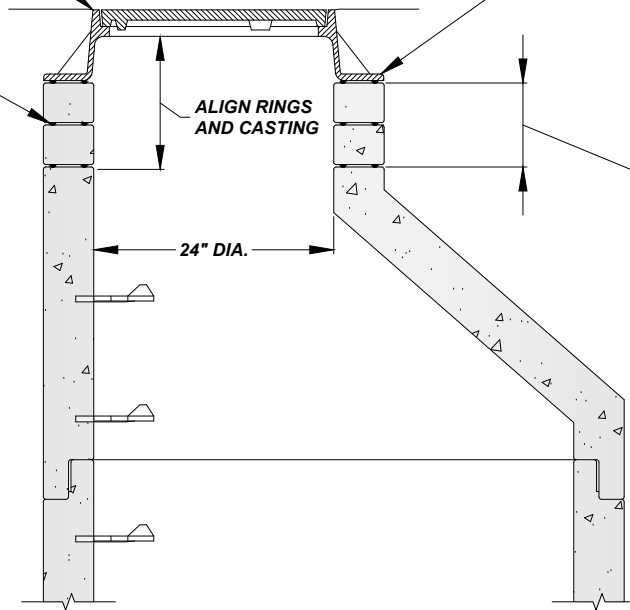
USE 1/4" ROLLED BUTYL MASTIC ROPE
BETWEEN STRUCTURE AND RINGS, ONE ALONG
INSIDE AND OUTSIDE EDGE. RINGS MUST BE
ALIGNED VERTICALLY AND HAVE NO CRACKS

USE 1/4" ROLLED BUTYL MASTIC ROPE BETWEEN
CASTING AND RING, ONE ALONG INSIDE AND OUTSIDE
EDGES WHEN POSSIBLE. FOR FINE ADJUSTMENT, A
NON-SHRINK RAPID SETTING MORTAR, SPEED CRETE
REDLINE OR SIMILAR APPROVED MATERIAL CAN BE
USED, MAXIMUM OF 2" THICKNESS. NO SHIMS, BRICK
OR CONCRETE UNDER CASTING

MAXIMUM 12" OF ADJUSTMENT, 2 OR FEWER
RINGS. 2" AND THICKER PRE-CAST RINGS ONLY.
BRICK STRUCTURE - IF THE TOP OF THE
STRUCTURE NEEDS REPAIRED OR REBUILT
BEYOND THE 12" MAXIMUM, THE ENGINEERING
DEPARTMENT WILL DETERMINE THE ACCEPTABLE
REPAIR UP TO AND INCLUDING REPLACEMENT
WITH A PRE-CAST CONCRETE STRUCTURE



MAXIMUM RING OFFSET ALLOWED
(MUST BE PRE-APPROVED TO ALLOW ADJUSTMENT)



MANHOLE CHIMNEY RECONSTRUCTION

NOT TO SCALE