

NEENAH R-1772 W/ TYPE 'B' LID WORD 'SANITARY' ON LID OR APPROVED EQUAL. INSTALL TOP OF CASTING 1/4" BELOW FINISHED PAVEMENT. FLUSH WITH FINISHED GRADE IN YARD/LANDSCAPED AREAS

STAINLESS STEEL TOP BAND  
TYPE 304 OR APPROVED EQUAL

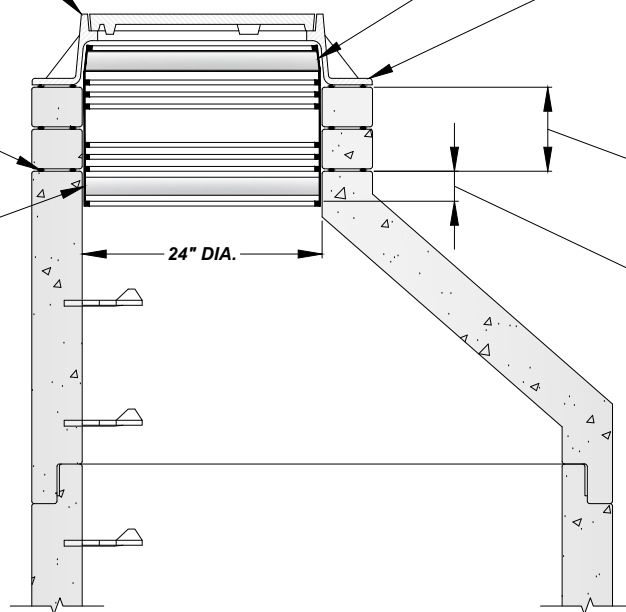
USE 1/4" ROLLED BUTYL MASTIC ROPE BETWEEN CASTING AND RING, ONE ALONG INSIDE AND OUTSIDE EDGES WHEN POSSIBLE. FOR FINE ADJUSTMENT, A NON-SHRINK RAPID SETTING MORTAR, SPEED CRETE REDLINE OR SIMILAR APPROVED MATERIAL CAN BE USED, MAXIMUM OF 2" THICKNESS. NO SHIMS, BRICK OR CONCRETE UNDER CASTING

MAXIMUM 12" OF ADJUSTMENT,  
2 OR FEWER RINGS. 2" AND  
THICKER PRE-CAST RINGS ONLY

3" MIN.

USE 1/4" ROLLED BUTYL MASTIC ROPE BETWEEN STRUCTURE AND RINGS, ONE ALONG INSIDE AND OUTSIDE EDGE. CASTING AND RINGS MUST BE ALIGNED VERTICALLY AND HAVE NO CRACKS

STAINLESS STEEL BOTTOM BAND  
TYPE 304 OR APPROVED EQUAL



TO SPAN CHIMNEY HEIGHTS OF:	
0" TO 3"	NARROW (6") SEAL ONLY
3" TO 6"	STANDARD (9") SEAL ONLY
6.5" TO 12"	STANDARD SEAL WITH EXTENSION
12"	STANDARD SEAL WITH MULTIPLE EXTENSIONS

## **MANHOLE INTERNAL CHIMNEY SEAL**

NOT TO SCALE