

NEENAH R-1772 W/ TYPE 'B' LID WORD 'SANITARY' ON LID OR APPROVED EQUAL. INSTALL TOP OF CASTING 1/4" BELOW FINISHED PAVEMENT. FLUSH WITH FINISHED GRADE IN YARD/LANDSCAPED AREAS

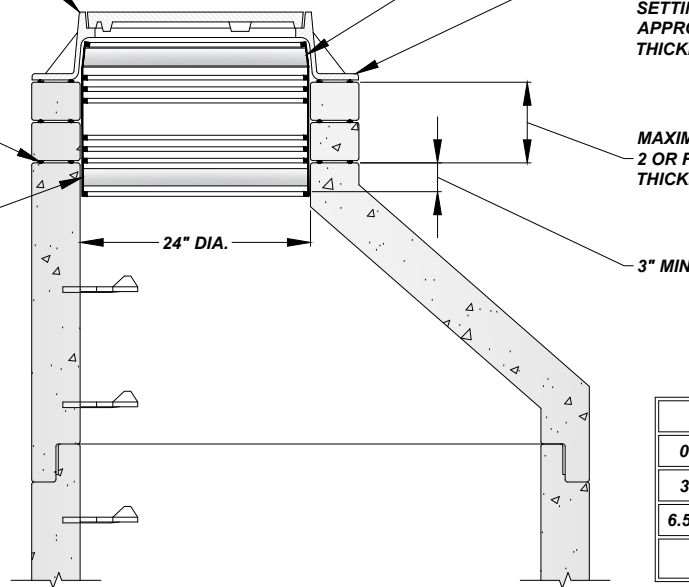
STAINLESS STEEL TOP BAND
TYPE 304 OR APPROVED EQUAL

USE 1/4" ROLLED BUTYL MASTIC ROPE BETWEEN CASTING AND RING, ONE ALONG INSIDE AND OUTSIDE EDGES WHEN POSSIBLE. FOR FINE ADJUSTMENT, A NON-SHRINK RAPID SETTING MORTAR, SPEED CRETE REDLINE OR SIMILAR APPROVED MATERIAL CAN BE USED, MAXIMUM OF 2" THICKNESS. NO SHIMS, BRICK OR CONCRETE UNDER CASTING

USE 1/4" ROLLED BUTYL MASTIC ROPE BETWEEN STRUCTURE AND RINGS, ONE ALONG INSIDE AND OUTSIDE EDGE. CASTING AND RINGS MUST BE ALIGNED VERTICALLY AND HAVE NO CRACKS

MAXIMUM 12" OF ADJUSTMENT,
2 OR FEWER RINGS. 2" AND
THICKER PRE-CAST RINGS ONLY

STAINLESS STEEL BOTTOM BAND
TYPE 304 OR APPROVED EQUAL



TO SPAN CHIMNEY HEIGHTS OF:	
0" TO 3"	NARROW (6") SEAL ONLY
3" TO 6"	STANDARD (9") SEAL ONLY
6.5" TO 12"	STANDARD SEAL WITH EXTENSION
12"	STANDARD SEAL WITH MULTIPLE EXTENSIONS

MANHOLE INTERNAL CHIMNEY SEAL

NOT TO SCALE

The City Of Goshen
Department of Public Works & Safety
Office of Engineering

204 East Jefferson, Suite 1 Street, Goshen, Indiana 46528
Phone: 574-534-2201 Fax: 574-533-8626
Web: goshenindiana.org

Date Approved By The City Of Goshen Board Of Public Works & Safety and Approved Revisions

03/27/2025

CITY OF GOSHEN, INDIANA
STANDARD DETAIL

Drafted By: J. Hoffman
Approved By: D. Sailor, P.E.

Drawing Number:
SW-108