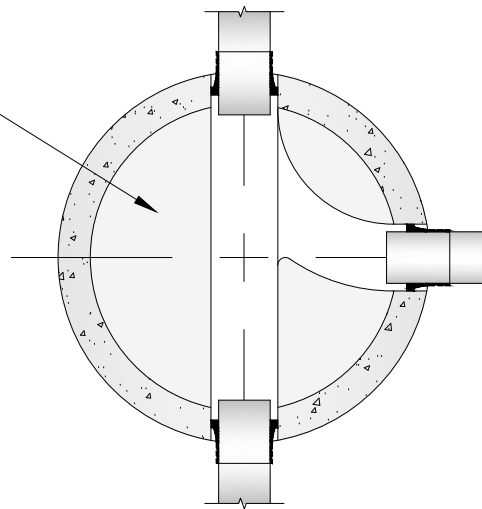


PRECAST INVERT AND BENCH. IF POURED  
IN THE FIELD, THE CITY OF GOSHEN  
ENGINEERING DEPARTMENT MUST  
PRE-APPROVE THE DESIGN BEFORE  
INSTALLING. IF NOT PRE-APPROVED, THE  
CONTRACTOR MAY BE REQUIRED TO  
REMOVE THE BENCH AND RE-POUR WITH  
NO ADDITIONAL COMPENSATION



**PLAN VIEW**

## **INVERT AND BENCH**

NOT TO SCALE

*The City Of Goshen*  
Department of Public Works & Safety  
Office of Engineering

204 East Jefferson, Suite 1 Street, Goshen, Indiana 46528  
Phone: 574-534-2201 Fax: 574-533-8626  
Web: goshenindiana.org

Date Approved By The City Of Goshen Board Of Public Works & Safety and Approved Revisions

03/27/2025					

**CITY OF GOSHEN, INDIANA**  
**STANDARD DETAIL**

Drafted By:	Approved By:
J. Hoffman	D. Sailor, P.E.
Drawing Number:	
<b>SW-107</b>	