

### GOSHEN FIRE DEPARTMENT - QUINT 3

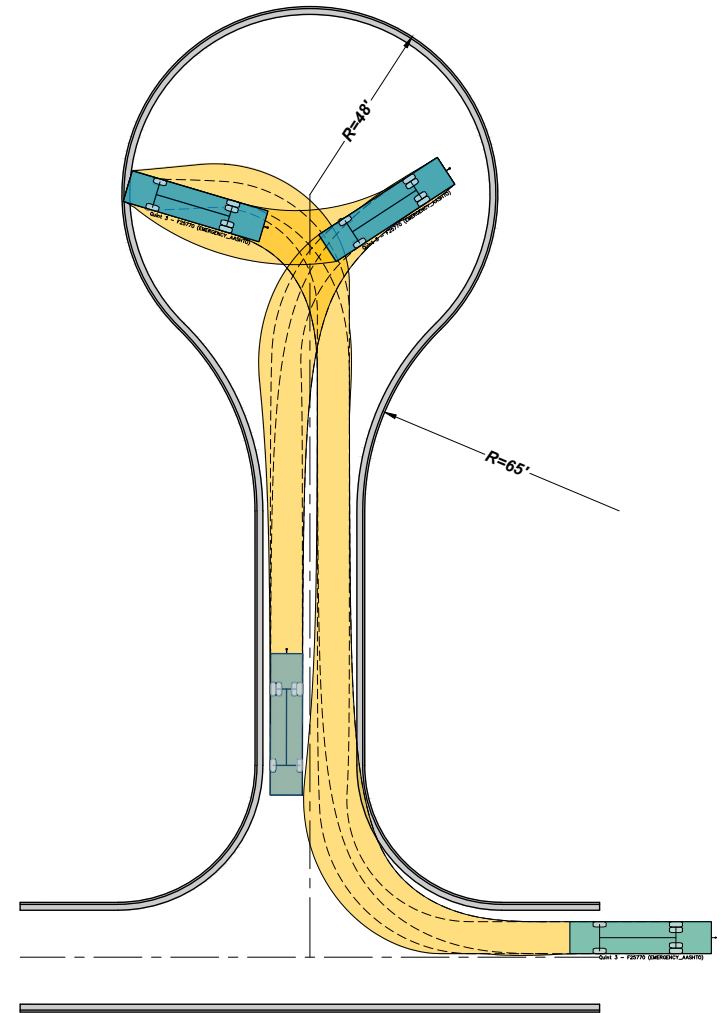
#### PARAMETERS

INSIDE CRAMP ANGLE:	45.00	DEGREE
AXLE TRACK:	82.92	IN.
WHEEL OFFSET:	4.68	IN.
TREAD WIDTH:	16.60	IN.
CHASSIS OVERHANG:	78.00	IN.
ADDITIONAL BUMPER DEPTH:	13.00	IN.
FRONT OVERHANG:	91.00	IN.
WHEELBASE:	234	IN.

#### CALCULATED TURNING RADII

INSIDE TURN:	18 FT. 5 IN.
CURB TO CURB	33 FT. 11 IN.
WALL TO WALL:	38 FT. 7 IN.

SPEED 10 MPH



## RESIDENTIAL CUL-DE-SAC WITH QUINT

NOT TO SCALE

*The City Of Goshen*  
Department of Public Works & Safety  
Office of Engineering

204 East Jefferson, Suite 1 Street, Goshen, Indiana 46528  
Phone: 574-534-2201 Fax: 574-533-8626  
Web: goshenindiana.org

Date Approved By The City Of Goshen Board Of Public Works & Safety and Approved Revisions

03/27/2025					

**CITY OF GOSHEN, INDIANA**  
**STANDARD DETAIL**

Drafted By: J. Hoffman  
Approved By: D. Sailor, P.E.  
Drawing Number: **RD-307**