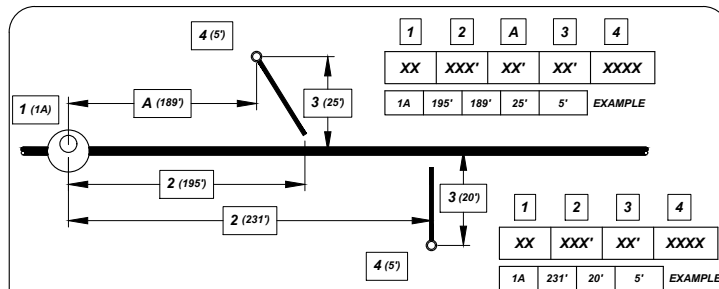


## ***CITY OF GOSHEN STANDARD MISC. DETAILS***

### ***SECTION 100 MISC. DETAILS***

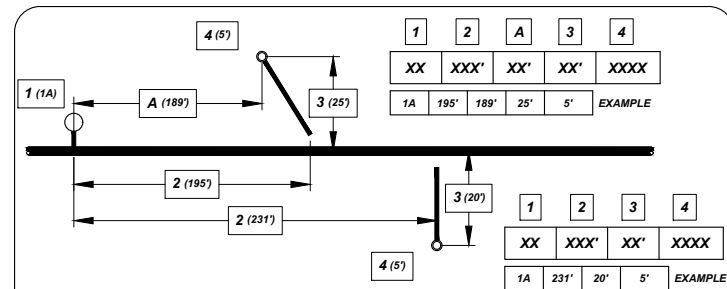
MC-101	RECORD DRAWINGS
MC-102	HORIZONTAL AND VERTICAL UTILITY SEPARATION
MC-103	VALVE BOX ADJUSTMENT PATCH
MC-104	MILLING AT PAVEMENT TRANSITION
MC-105	AGGREGATE SHOULDER
MC-106	DECORATIVE STREET LIGHT
MC-107	DECORATIVE STREET LIGHT FOUNDATION
MC-108	DECORATIVE STREET LIGHT H-PANEL
MC-109	TREE PLANTING

### WATER SERVICE RECORD MEASURED FROM SANITARY MANHOLES



- 1** = DOWNSTREAM SANITARY MANHOLE NUMBER (PLAN NUMBER)
- 2** = LOCATION OF CORPORATION STOP FROM DOWNSTREAM SANITARY MANHOLE (FEET)
- A** = LOCATION OF CURB STOP FROM DOWNSTREAM SANITARY MANHOLE OVER THE SANITARY SEWER MAIN (FEET) (IF NOT PERPENDICULAR)
- 3** = LENGTH OF WATER SERVICE PERPENDICULAR TO SANITARY SEWER MAIN (FEET)
- 4** = DEPTH OF WATER SERVICE AT CURB STOP

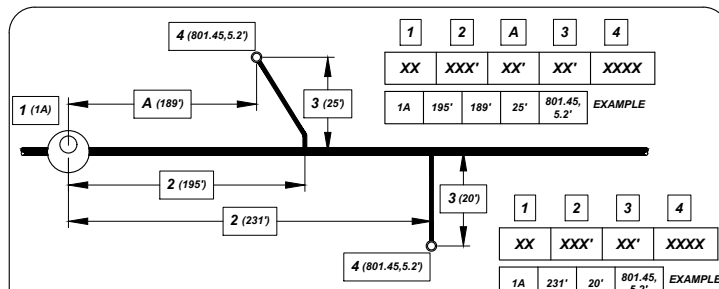
### WATER SERVICE RECORD MEASURED FROM FIRE HYDRANTS



- 1** = NEAREST FIRE HYDRANT
- 2** = LOCATION OF CORPORATION STOP FROM NEAREST FIRE HYDRANT (FEET)
- A** = LOCATION OF CURB STOP FROM NEAREST FIRE HYDRANT OVER THE WATER MAIN (FEET) (IF NOT PERPENDICULAR)
- 3** = LENGTH OF WATER SERVICE PERPENDICULAR TO WATER MAIN (FEET)
- 4** = DEPTH OF WATER SERVICE AT CURB STOP

PLACE THE APPROPRIATE ABOVE DETAIL(S) ON EACH RECORD DRAWING SHEET

### LATERAL SERVICE RECORD MEASURED FROM SANITARY MANHOLES



- 1** = DOWNSTREAM SANITARY MANHOLE NUMBER (PLAN NUMBER)
- 2** = LOCATION OF WYE FROM DOWNSTREAM SANITARY MANHOLE (FEET)
- A** = LOCATION OF CLEANOUT FROM DOWNSTREAM SANITARY MANHOLE OVER THE SANITARY SEWER MAIN (FEET) (IF NOT PERPENDICULAR)
- 3** = LENGTH OF SEWER LATERAL PERPENDICULAR TO SANITARY SEWER MAIN (FEET)
- 4** = DEPTH OF SEWER LATERAL AT CLEANOUT (INVERT, FEET)

CONTRACTOR:

CONTRACTOR'S NAME  
STREET ADDRESS  
P.O. BOX NUMBER  
CITY, STATE, ZIP CODE  
PHONE NUMBER

CONTRACTOR SUPERINTENDENT: SUPERINTENDENT'S NAME

YEAR COMPLETED: MOUTH YEAR

PROJECT INSPECTOR: INSPECTOR'S NAME

PLACE ON COVER SHEET

**The City Of Goshen**  
Department of Public Works & Safety  
Office of Engineering

204 East Jefferson, Suite 1 Street, Goshen, Indiana 46528  
Phone: 574-534-2201 Fax: 574-533-8626  
Web: goshenindiana.org

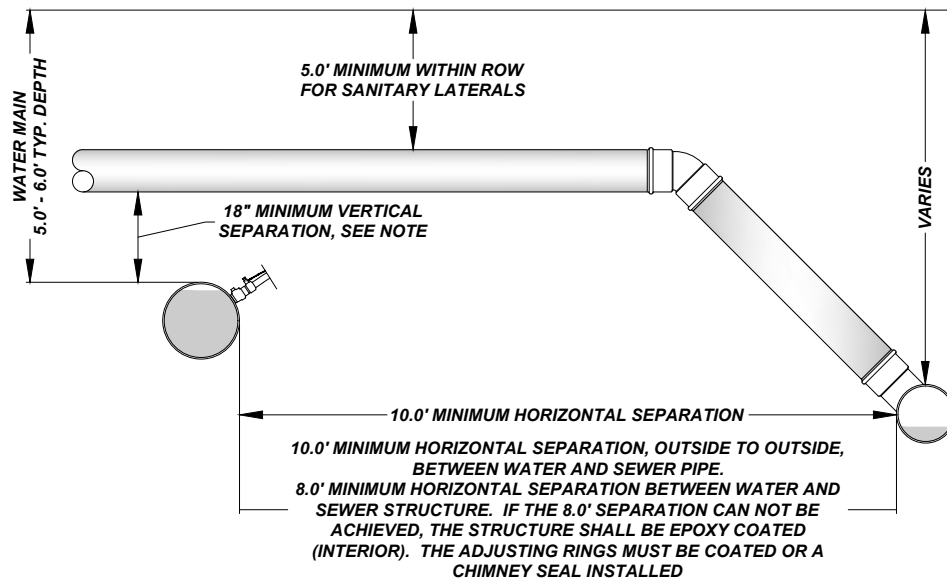
Date Approved By The City Of Goshen Board Of Public Works & Safety and Approved Revisions

03/27/2025

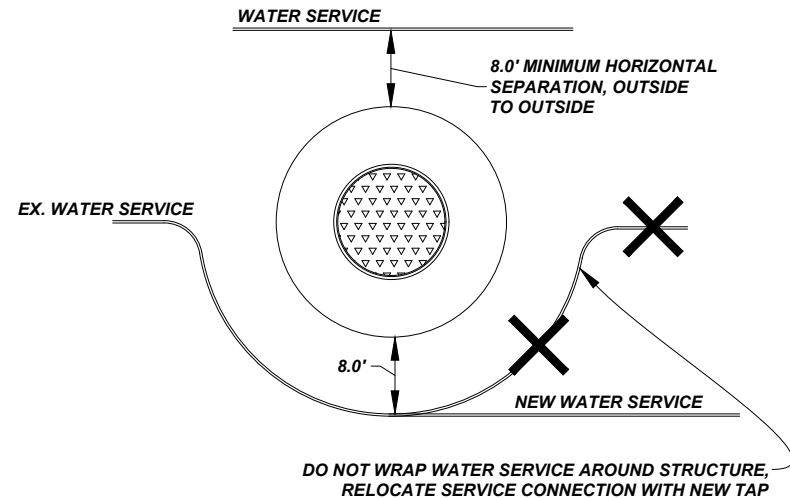
**CITY OF GOSHEN, INDIANA**  
**STANDARD DETAIL**

Drafted By: J. Hoffman  
Approved By: D. Sailor, P.E.

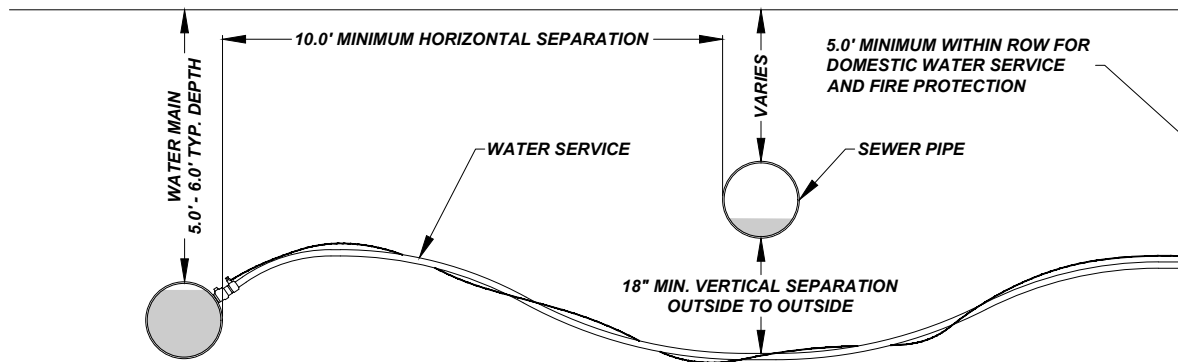
Drawing Number:  
**MC-101**



**WATER MAIN AND SEWER LATERAL**



**WATER SERVICE AND STRUCTURE CONFLICT**



**WATER SERVICE AND SEWER PIPE SEPARATION**

**NOTES:**

1. **WATER MAIN AND WATER SERVICE SEPARATION REQUIREMENTS:**
  - 10.0' HORIZONTAL SEPARATION FROM STORM PIPE, SANITARY PIPE AND SEWER LATERAL. MEASURED FROM OUTSIDE PIPE EDGES
  - 8.0' HORIZONTAL SEPARATION FROM SEWER STRUCTURE MEASURED FROM OUTSIDE EDGE OF STRUCTURE TO OUTSIDE OF PIPE
  - 18" VERTICAL SEPARATION FROM SEWER. MEASURED FROM OUTSIDE PIPE EDGES. IF 18" OF VERTICAL SEPARATION CANNOT BE ACHIEVED DUE TO EXISTING CONDITIONS, CHANGE THE SEWER PIPE MATERIAL TO AN APPROVED PRESSURE GRADE MATERIAL AT THE PIPE CROSSING. USE A FULL SECTION OF PIPE CENTERED AT THE CROSSING TO PLACE JOINTS AS FAR AWAY FROM THE CROSSING PIPE. A MINIMUM OF 6" OF VERTICAL SEPARATION REQUIRED NO MATTER THE MATERIAL TYPE. VERTICAL SEPARATION BETWEEN 6" TO 12" WILL REQUIRE A FLOWABLE FILL PIPE SADDLE, SEE DETAIL
2. IF THESE SEPARATION REQUIREMENTS CANNOT BE MET, A CHANGE OF MATERIAL TYPE, CASING OR INTERIOR EPOXY COATING OF STRUCTURE WILL BE REQUIRED. CITY OF GOSHEN ENGINEERING DEPARTMENT TO APPROVE METHOD USED PRIOR TO INSTALLATION
3. WATER AND SEWER PIPES SHALL CROSS AT NO LESS THAN 45 DEGREES, ELSE THEY ARE CONSIDERED PARALLEL PIPES REQUIRING 10' OF HORIZONTAL SEPARATION

**HORIZONTAL AND VERTICAL UTILITY SEPARATION**

NOT TO SCALE

*The City Of Goshen*  
Department of Public Works & Safety  
Office of Engineering

204 East Jefferson, Suite 1 Street, Goshen, Indiana 46528  
Phone: 574-534-2201 Fax: 574-533-8626  
Web: goshenindiana.org

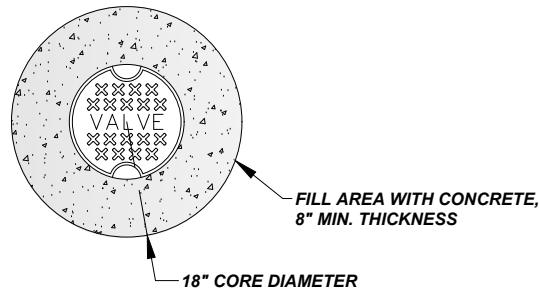
Date Approved By The City Of Goshen Board Of Public Works & Safety and Approved Revisions

03/27/2025

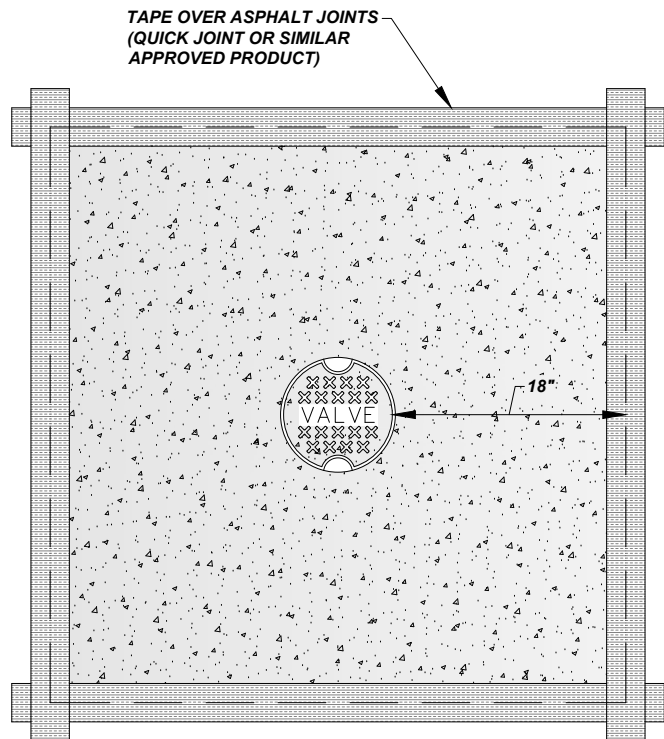
**CITY OF GOSHEN, INDIANA**  
**STANDARD DETAIL**

Drafted By: J. Hoffman  
Approved By: D. Sailor, P.E.

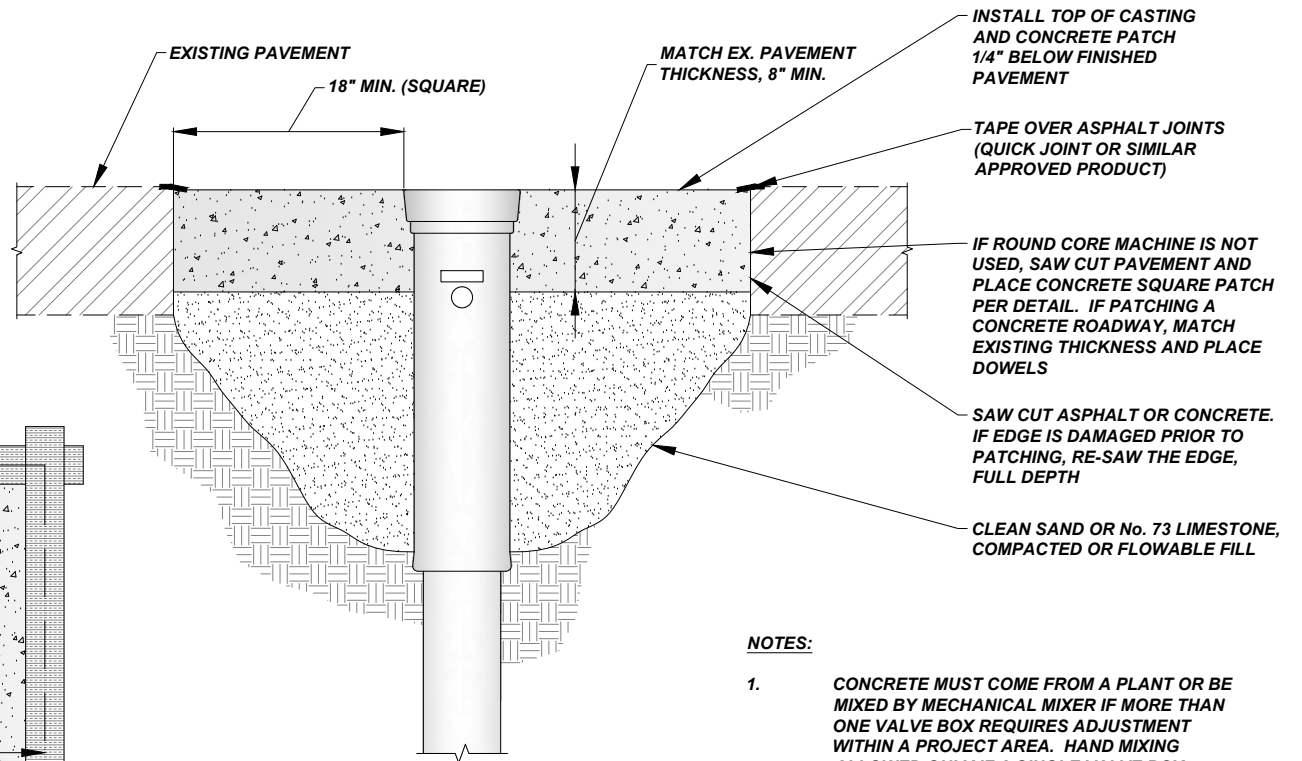
Drawing Number:  
**MC-102**



**ROUND CORE - PLAN VIEW**



**SAW CUT - PLAN VIEW**



**NOTES:**

1. CONCRETE MUST COME FROM A PLANT OR BE MIXED BY MECHANICAL MIXER IF MORE THAN ONE VALVE BOX REQUIRES ADJUSTMENT WITHIN A PROJECT AREA. HAND MIXING ALLOWED ONLY IF A SINGLE VALVE BOX REQUIRES ADJUSTMENT WITHIN A PROJECT AREA. CLASS 'A' CONCRETE, 4,000 PSI
2. EXCAVATABLE FLOWABLE BACKFILL IN ACCORDANCE WITH SECTION 213-04 OF THE CURRENT INDOT STANDARD SPECIFICATIONS

**VALVE BOX ADJUSTMENT PATCH**

NOT TO SCALE

*The City Of Goshen*  
Department of Public Works & Safety  
Office of Engineering

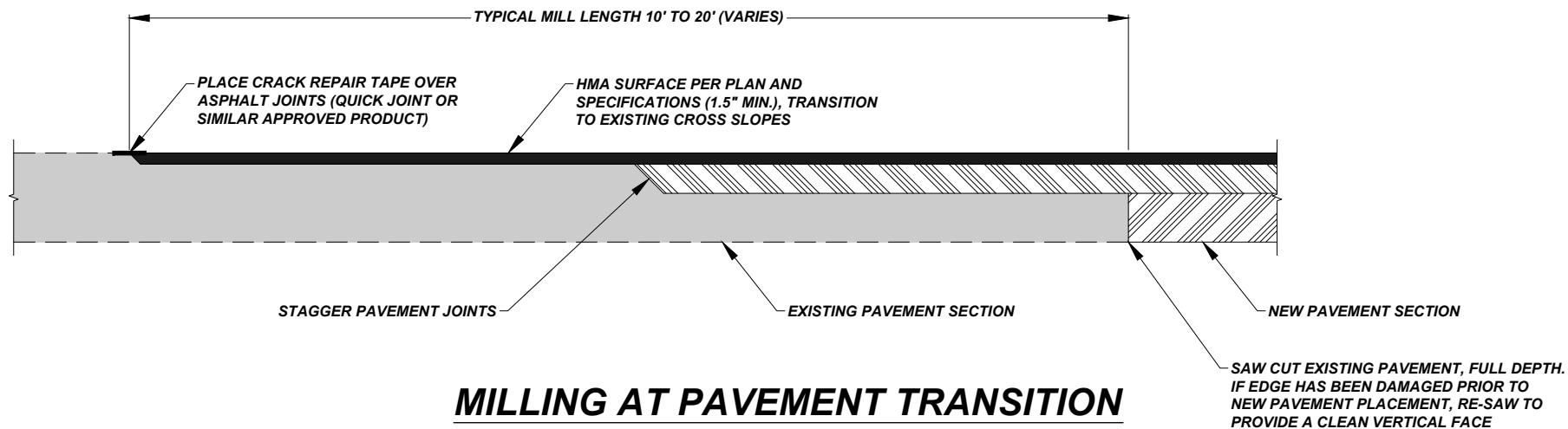
204 East Jefferson, Suite 1 Street, Goshen, Indiana 46528  
Phone: 574-534-2201 Fax: 574-533-8626  
Web: goshenindiana.org

Date Approved By The City Of Goshen Board Of Public Works & Safety and Approved Revisions

03/27/2025

**CITY OF GOSHEN, INDIANA**  
**STANDARD DETAIL**

Drafted By: J. Hoffman  
Approved By: D. Sailor, P.E.  
Drawing Number: MC-103



## **MILLING AT PAVEMENT TRANSITION**

NOT TO SCALE

*The City Of Goshen*  
 Department of Public Works & Safety  
 Office of Engineering

204 East Jefferson, Suite 1 Street, Goshen, Indiana 46528  
 Phone: 574-534-2201 Fax: 574-533-8626  
 Web: goshenindiana.org

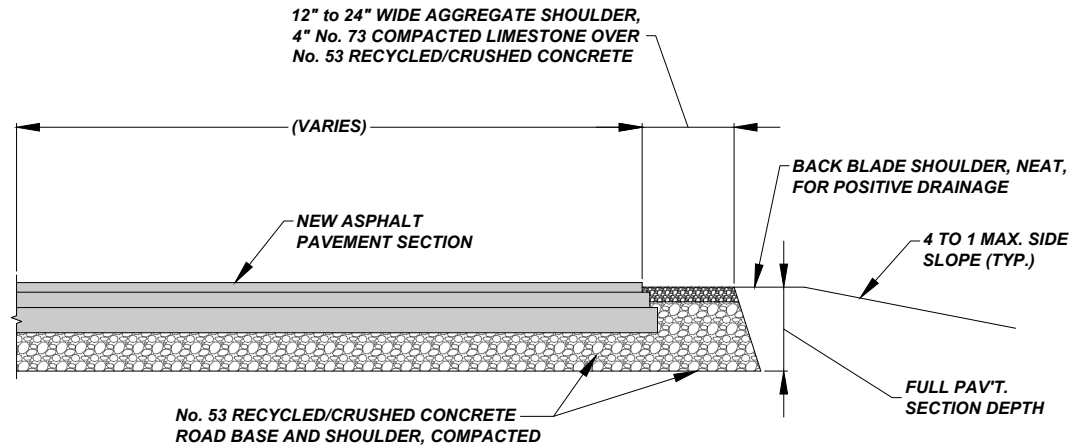
Date Approved By The City Of Goshen Board Of Public Works & Safety and Approved Revisions

03/27/2025

**CITY OF GOSHEN, INDIANA**  
**STANDARD DETAIL**

Drafted By: J. Hoffman  
 Approved By: D. Sailor, P.E.

Drawing Number:  
**MC-104**



**NOTES:**

1. AGGREGATE SHOULDER SHALL SLOPE TOWARDS YARDS TO PROVIDE POSITIVE DRAINAGE FROM THE ROADWAY
2. PLACE ROADWAY AND AGGREGATE SHOULDER 1" TO 1.5" ABOVE EXISTING YARDS TO PREVENT PONDING ALONG ROADWAY. THIS MAY REQUIRE ADJUSTING THE ROADWAY PROFILE OR CUTTING DOWN THE YARD
3. THE CITY REPRESENTATIVE SHALL WORK WITH THE CONTRACTOR ON FINAL GRADES OF THE ROADWAY AND AGGREGATE SHOULDERS TO PROVIDE POSITIVE DRAINAGE AND MATCHING TO EXISTING DRIVEWAYS AND/OR PAVEMENT

## **AGGREGATE SHOULDER**

NOT TO SCALE

*The City Of Goshen*  
Department of Public Works & Safety  
Office of Engineering

204 East Jefferson, Suite 1 Street, Goshen, Indiana 46528  
Phone: 574-534-2201 Fax: 574-533-8626  
Web: goshenindiana.org

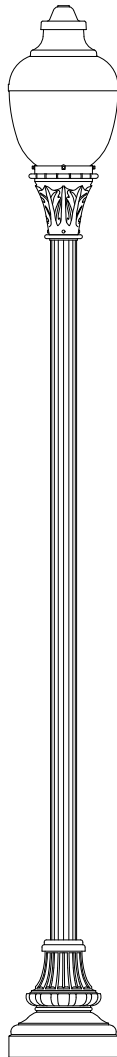
Date Approved By The City Of Goshen Board Of Public Works & Safety and Approved Revisions

03/27/2025

**CITY OF GOSHEN, INDIANA**  
**STANDARD DETAIL**

Drafted By: J. Hoffman  
Approved By: D. Sailor, P.E.

Drawing Number:  
**MC-105**



### **FIXTURE SPECIFICATIONS**

AWDES P20 40K MVOLT CLF AL5LU BK NF 20KV

<b>SERIES (AWDE3)</b>	ACRYLIC WASHINGTON POSTLITE LED
<b>PERFORMANCE PACKAGE (P20)</b>	40W LUMENS (NOMINAL), 6,000
<b>COLOR TEMPERATURE (40K)</b>	4000K
<b>VOLTAGE (MVOLT)</b>	120-277V
<b>HOUSING (CLF)</b>	CLASSIC LEAF CASTING
<b>OPTICS (AL5LU)</b>	TYPE V ACRYLIC LUNAR OPTIC
<b>FINISH (BK)</b>	BLACK
<b>FINIAL (NF)</b>	NO FINIAL
<b>SURGE PROTECTION (20KV)</b>	20kV/10kA SURGE PROTECTION

### **POLE AND BASE SPECIFICATIONS**

WDA 12 F4J 17D C03 BK LAB GRD RP135A

<b>SERIES (WDA)</b>	WADSWORTH ALUMINUM POLE
<b>POLE HEIGHT (12)</b>	12FT
<b>SHAFT STYLE (F4J)</b>	SHAFT, 4 IN DIA. FLUTED, 0.25 WALL
<b>BASE DIAMETER (17D)</b>	17IN BASE, DIAMOND PATTERN BOLT CIRCLE
<b>POLE TOP MOUNT (C03)</b>	TENON, 3.00 O.D. X 3IN TALL
<b>FINISH (BK)</b>	BLACK
<b>BASE MOUNT (LAB)</b>	LESS ANCHOR BOLT
<b>GROUND (GRD)</b>	1/2 COPPER GROUNDING LUG
<b>ELECTRICAL RECEPTACLE (RP135A)</b>	RECEPTACLE WITH SMALL, IN-USE WET LOCATION COVER (BLACK)

## **DECORATIVE STREET LIGHT**

NOT TO SCALE

*The City Of Goshen*  
Department of Public Works & Safety  
Office of Engineering

204 East Jefferson, Suite 1 Street, Goshen, Indiana 46528  
Phone: 574-534-2201 Fax: 574-533-8626  
Web: goshenindiana.org

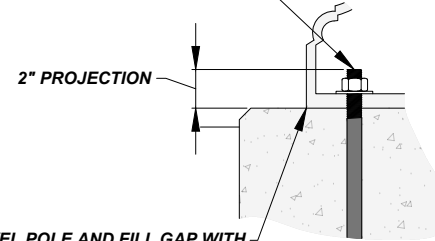
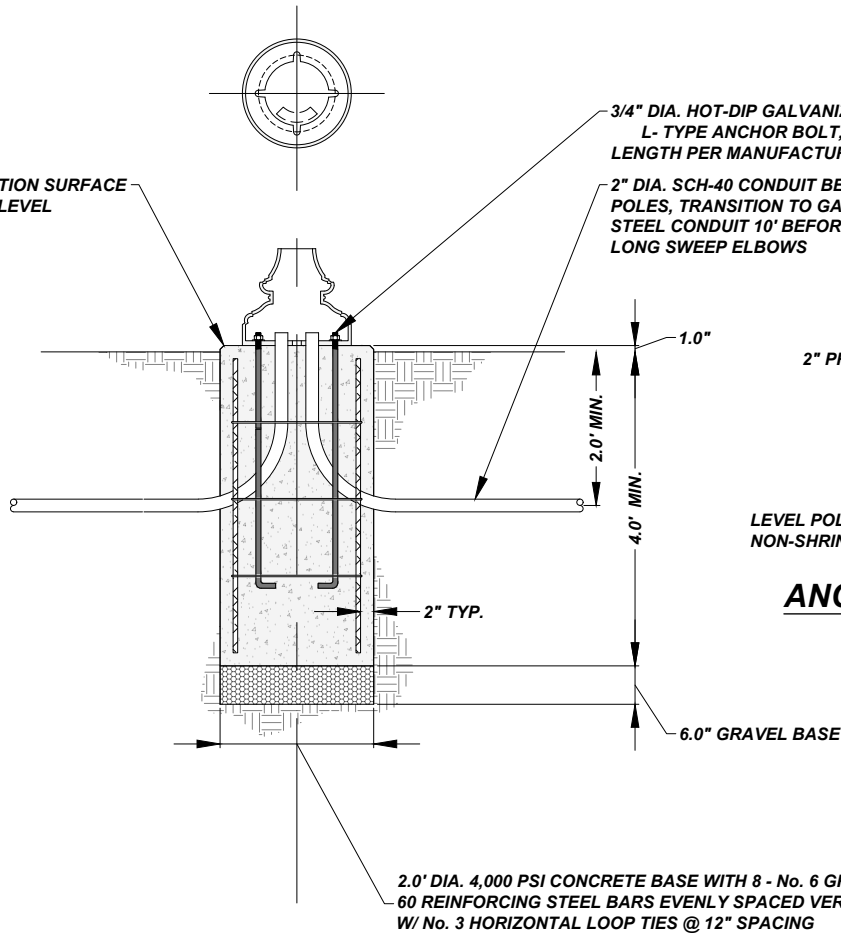
Date Approved By The City Of Goshen Board Of Public Works & Safety and Approved Revisions

03/27/2025					

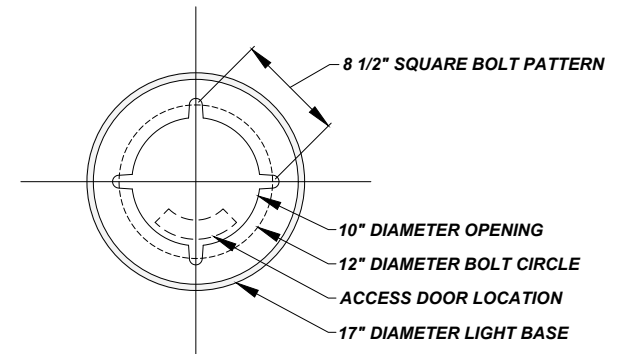
**CITY OF GOSHEN, INDIANA**  
**STANDARD DETAIL**

Drafted By:	Approved By:
J. Hoffman	D. Sailor, P.E.
Drawing Number:	
<b>MC-106</b>	

CONCRETE FOUNDATION SURFACE  
MUST BE FLAT AND LEVEL



### ANCHOR BOLT DETAIL



### BOLT PATTERN DETAIL

## DECORATIVE STREET LIGHT FOUNDATION

NOT TO SCALE

*The City Of Goshen*  
Department of Public Works & Safety  
Office of Engineering

204 East Jefferson, Suite 1 Street, Goshen, Indiana 46528  
Phone: 574-534-2201 Fax: 574-533-8626  
Web: goshenindiana.org

Date Approved By The City Of Goshen Board Of Public Works & Safety and Approved Revisions

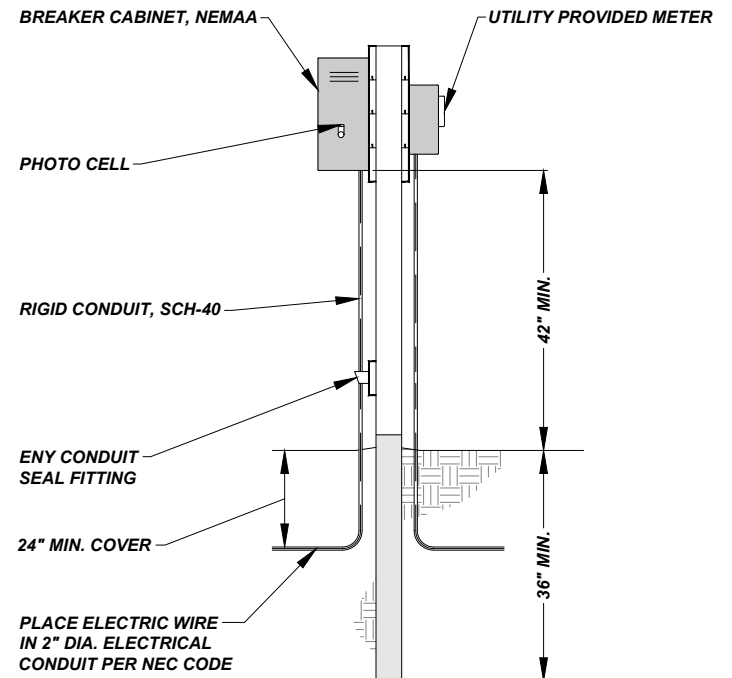
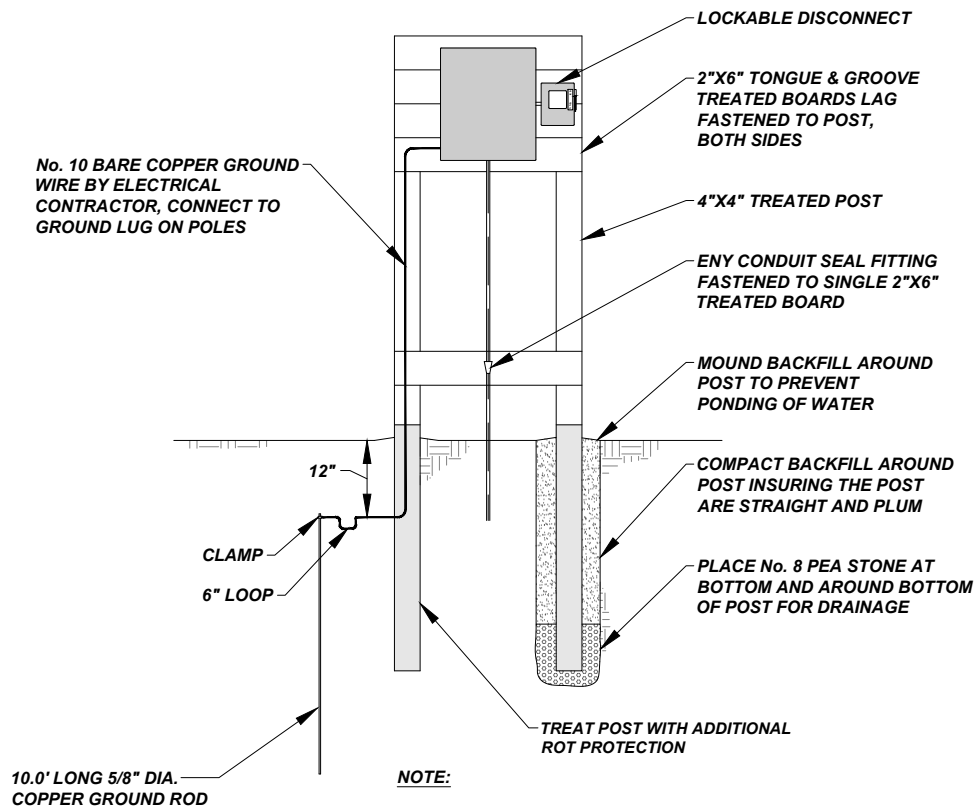
03/27/2025

**CITY OF GOSHEN, INDIANA**  
**STANDARD DETAIL**

Drafted By: J. Hoffman  
Approved By: D. Sailor, P.E.

Drawing Number:  
**MC-107**





## DECORATIVE LIGHTS H-PANEL

NOT TO SCALE

*The City Of Goshen*  
Department of Public Works & Safety  
Office of Engineering

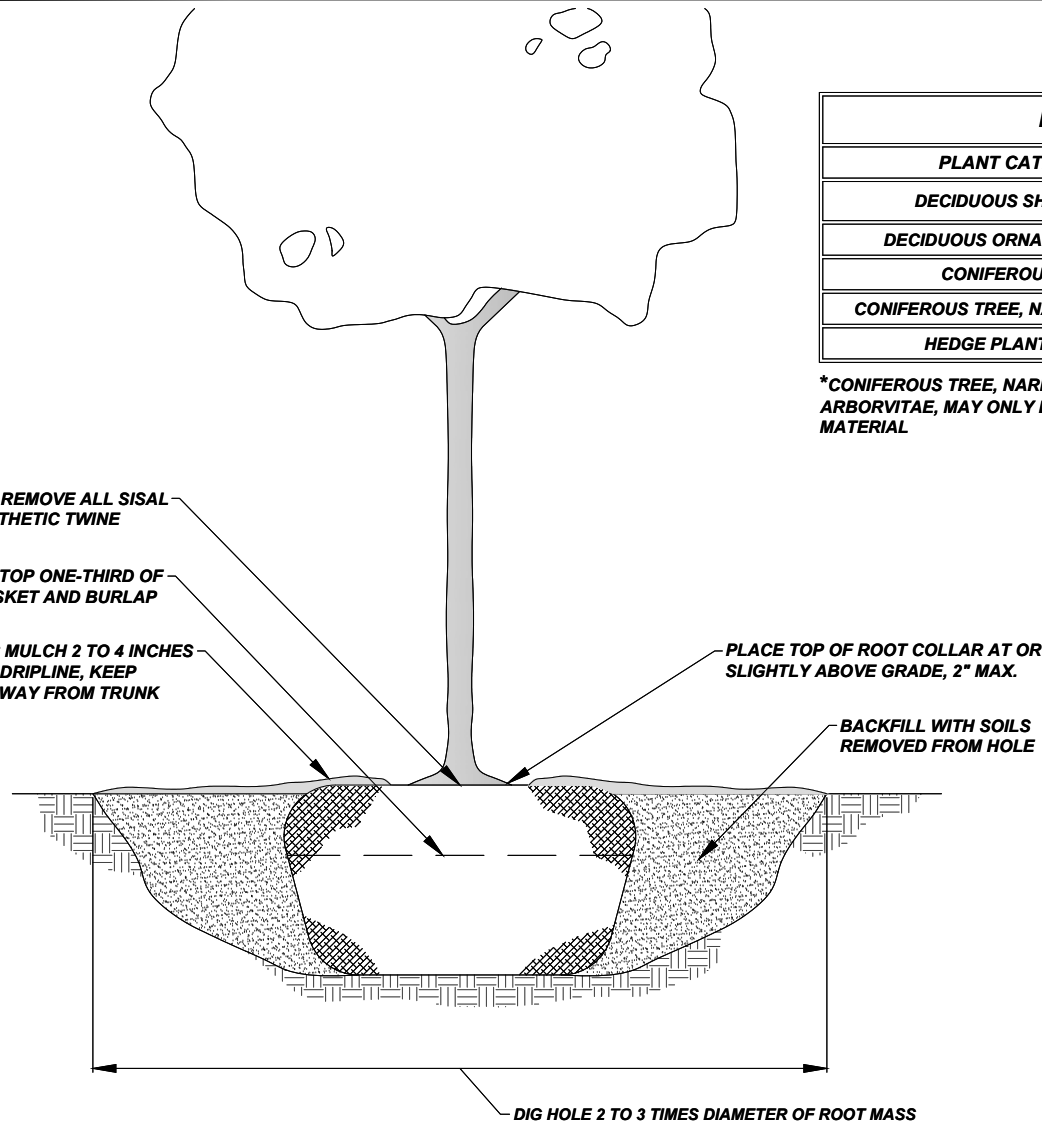
204 East Jefferson, Suite 1 Street, Goshen, Indiana 46528  
Phone: 574-534-2201 Fax: 574-533-8626  
Web: goshenindiana.org

Date Approved By The City Of Goshen Board Of Public Works & Safety and Approved Revisions

03/27/2025					

**CITY OF GOSHEN, INDIANA**  
**STANDARD DETAIL**

Drafted By: J. Hoffman  
Approved By: D. Sailor, P.E.  
Drawing Number: MC-108



MINIMUM SIZE AT TIME OF PLANTING	
PLANT CATEGORY	MIN. SIZE
DECIDUOUS SHADE TREE	2 INCH CALIPER AT 1' ABOVE GROUND
DECIDUOUS ORNAMENTAL TREE	1 1/2 INCH CALIPER AT 1' ABOVE GROUND
CONIFEROUS TREE	6 FEET HIGH
CONIFEROUS TREE, NARROW SPREAD*	4 FEET HIGH
HEDGE PLANTS/SHRUB	18 INCH HIGH

\*CONIFEROUS TREE, NARROW SPREAD, SUCH AS ARBORVITAE, MAY ONLY BE USED AS AN ALTERNATE PLANT MATERIAL

## **TREE PLANTING**

NOT TO SCALE

*The City Of Goshen*  
Department of Public Works & Safety  
Office of Engineering

204 East Jefferson, Suite 1 Street, Goshen, Indiana 46528  
Phone: 574-534-2201 Fax: 574-533-8626  
Web: goshenindiana.org

Date Approved By The City Of Goshen Board Of Public Works & Safety and Approved Revisions

03/27/2025

**CITY OF GOSHEN, INDIANA**  
**STANDARD DETAIL**

Drafted By: J. Hoffman  
Approved By: D. Sailor, P.E.

Drawing Number:  
**MC-109**