

CITY OF GOSHEN STANDARD ROAD DETAILS

SECTION 100 GENERAL ROAD DETAILS

RD-101	CONCRETE CURB REPAIR/REPLACEMENT
RD-102	MONOLITHIC SIDEWALK OR PATH WITH CONCRETE CURB
RD-103	SIDEWALK OR PATH ADJACENT TO CONCRETE CURB
RD-104	TEMPORARY RESIDENTIAL CUL-DE-SAC

SECTION 200 ASPHALT PAVEMENT PATCH DETAILS

RD-201	LARGE ASPHALT PAVEMENT PATCH
RD-202	SMALL ASPHALT PAVEMENT PATCH
RD-203	UTILITY POTHOLE ASPHALT PAVEMENT PATCH

SECTION 300 ROADWAY GEOMETRY DETAILS

RD-301	COMMERCIAL/INDUSTRIAL DRIVE DIAGRAM
RD-302	RESIDENTIAL DRIVE DIAGRAM
RD-303	COMMERCIAL/INDUSTRIAL CUL-DE-SAC LAYOUT
RD-304	INDUSTRIAL CUL-DE-SAC WITH QUINT
RD-305	INDUSTRIAL CUL-DE-SAC WITH LADDER 1
RD-306	RESIDENTIAL CUL-DE-SAC LAYOUT
RD-307	RESIDENTIAL CUL-DE-SAC WITH QUINT
RD-308	RESIDENTIAL CUL-DE-SAC WITH LADDER 1

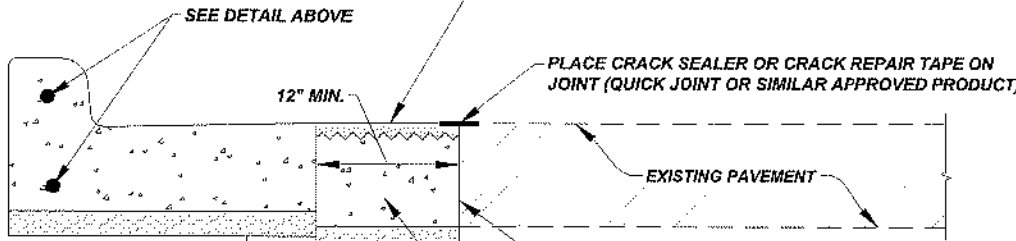
SECTION 400 DRIVEWAY, SIDEWALK AND CONCRETE CURB DETAILS

RD-401	COMMERCIAL/INDUSTRIAL DRIVEWAY LAYOUT
RD-402	RESIDENTIAL DRIVEWAY LAYOUT
RD-403	DRIVEWAY APPROACH PROFILE
RD-404	RESIDENTIAL DRIVEWAY APPROACH
RD-405	SIDEWALK WITH TREE LAWN
RD-406	SIDEWALK ADJACENT TO CONCRETE CURB
RD-407	CONCRETE CURB & GUTTER AT DRIVEWAY APPROACH
RD-408	STANDARD CONCRETE CURB

IF THE REMAINING SECTION OF EXISTING CURB IS LESS THAN 5' IN LENGTH FROM THE NEAREST EXPANSION/CONTRACTION JOINT, THEN PLACE (2) #5 REBAR TO JOIN THE CURB SECTIONS TOGETHER, PIN. IF THE EXISTING CURB IS OVER 5' OR GREATER IN LENGTH, PLACE EXPANSION JOINT BETWEEN CURB SECTIONS. REMOVAL OF THE EXISTING CURB TO THE NEAREST JOINT IS ACCEPTABLE IN LIEU OF REBAR CONNECTION AND RE-POURING THE SECTION IS ACCEPTABLE AS WELL IN PLACE OF REBAR



LEAVE THE CONCRETE 2" BELOW EXISTING ASPHALT PAVEMENT, CONCRETE SURFACE SHALL BE RAKED OR SCORED FOR BONDING THE HMA SURFACE TO CONCRETE. IF THE WORK IS PERFORMED DURING COLD TEMPERATURES AND NO HMA SURFACE IS AVAILABLE, USE COLD MIX. THE COLD MIX WILL NEED TO BE REMOVED AND REPLACED WITH HMA SURFACE ONCE HMA IS AVAILABLE



IF THE EXISTING SUBBASE/SUBGRADE IS FIRM, NO OTHER MATERIAL IS REQUIRED. IF THE MATERIAL IS NOT FIRM, COMPACTED No. 53 CRUSHED/RECYCLED CONCRETE BASE IS REQUIRED

FILL AREA BETWEEN CURB AND EXISTING PAVEMENT WITH CLASS 'A' CONCRETE

NOTES:

1. CLASS 'A' CONCRETE, 4,000 PSI
2. EXPANSION JOINT LOCATIONS:
STRAIGHT CURB SECTION - EVERY 40'
ROADWAY CURVE - BEGINNING POINT, MID POINT, END POINT AND EVERY 40' ALONG CURVE
INTERSECTION RADIUS - BEGINNING POINT, MID POINT, END POINT WITHOUT ADA RAMP OR SIDEWALK.
EACH SIDE OF RAMP
CURB CASTING - 4' FROM EACH SIDE OF THE CASTING
EXPANSION MATERIAL MUST BE FULL DEPTH AND WIDTH OF CURB SECTION OR WILL REQUIRE REPLACED
3. CONTRACTION JOINT LOCATIONS:
REQUIRED EVERY 10' AT 1/3 THE DEPTH, D/3, ALONG STRAIGHT CURB SECTIONS, ROADWAY CURVES AND INTERSECTION RADI
SAW CUT CONTRACTION JOINTS WITHIN 24 HOURS OF PLACEMENT
NO TOOLING OF CONTRACTIONS JOINTS IS ALLOWED
4. REMOVE ALL EXCESS MATERIAL ALONG THE FACE OF THE CURB PRIOR TO MATERIAL SETTING TO ALLOW A CLEAN VERTICAL FACE TO PAVE OR POUR AGAINST. REMOVE EXCESS MATERIAL ALONG BACKSIDE OF CURB, AT DRIVE APPROACHES AND SIDEWALKS, TO ALLOW A CLEAN VERTICAL FACE FOR EXPANSION MATERIAL BETWEEN CONCRETE POURS
6. THE SUB-BASE/SUB-GRADE CAN NOT BE FROZEN OR WET WHEN THE CONCRETE IS PLACED. IF THE TEMPERATURES WILL CAUSE FROST IN THE GROUND, BLANKETS NEED TO BE PLACED OVER THE SUB-BASE/SUB-GRADE TO PREVENT FREEZING PRIOR TO PLACING THE CONCRETE
4. BROOM FINISH THE CONCRETE
APPLY WHITE PIGMENT SEALER
APPLY A DOUBLE COAT OF SEALER FROM SEPT. 1 THROUGH MARCH 31 TO PROTECT AGAINST WINTER SALT
5. RESTORE YARD AREAS WITH 4" OF CLEAN TOPSOIL, INDOT TYPE 'U' WITHOUT CLOVER, COVER WITH EROSION CONTROL BLANKET. THE CONTRACTOR IS RESPONSIBLE TO ACHIEVE 70% EVEN COVERAGE

NOTE:

PREFERRED METHOD - REMOVE EXISTING CURB WITHOUT DAMAGING THE ASPHALT PAVEMENT THEN POUR THE NEW CURB AGAINST THE EXISTING ASPHALT PAVEMENT
ALTERNATE METHOD - IF EXISTING PAVEMENT IS DAMAGED, REPLACEMENT SHALL BE AS DETAILED

CONCRETE CURB REPAIR/REPLACEMENT

NOT TO SCALE

The City Of Goshen
Department of Public Works & Safety
Office of Engineering

204 East Jefferson, Suite 1 Street, Goshen, Indiana 46528
Phone: 574-534-2201 Fax: 574-533-8626
Web: goshenindiana.org

Date Approved By The City Of Goshen Board Of Public Works & Safety and Approved Revisions

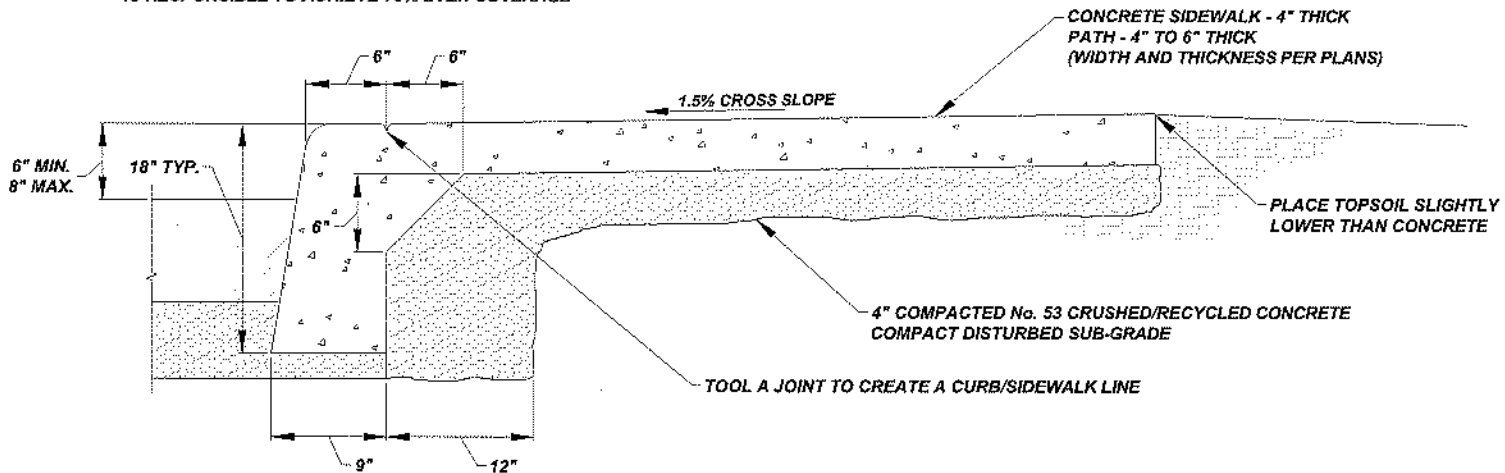
--	--	--	--	--	--

**CITY OF GOSHEN, INDIANA
STANDARD DETAIL**

Drafted By: J. Hoffman
Approved By: D. Sailor, P.E.
Drawing Number: RD-101

NOTES:

1. CLASS 'A' CONCRETE, 4,000 PSI
2. EXPANSION JOINT LOCATIONS:
STRAIGHT CURB SECTION - EVERY 40'
ROADWAY CURVE - BEGINNING POINT, MID POINT, END POINT AND EVERY 40' ALONG CURVE
INTERSECTION RADIUS - BEGINNING POINT, MID POINT, END POINT WITHOUT ADA RAMP OR SIDEWALK. EACH SIDE OF RAMP
CURB CASTING - 4' FROM EACH SIDE OF THE CASTING
 EXPANSION MATERIAL MUST BE FULL DEPTH AND WIDTH OF CURB SECTION OR WILL REQUIRE REPLACED
3. CONTRACTION JOINT LOCATIONS:
 REQUIRED EVERY 10' AT 1/3 THE DEPTH, D/3, ALONG STRAIGHT CURB SECTIONS, ROADWAY CURVES AND INTERSECTION RADII
 SAW CUT CONTRACTION JOINTS WITHIN 24 HOURS OF PLACEMENT
 NO TOOLING OF CONTRACTIONS JOINTS IS ALLOWED
4. REMOVE ALL EXCESS MATERIAL ALONG THE FACE OF THE CURB PRIOR TO MATERIAL SETTING TO ALLOW A CLEAN VERTICAL FACE TO PAVE OR POUR AGAINST. REMOVE EXCESS MATERIAL ALONG BACKSIDE OF CURB, AT DRIVE APPROACHES AND SIDEWALKS, TO ALLOW A CLEAN VERTICAL FACE FOR EXPANSION MATERIAL BETWEEN CONCRETE POURS
6. THE SUB-BASE/SUB-GRADE CAN NOT BE FROZEN OR WET WHEN THE CONCRETE IS PLACED. IF THE TEMPERATURES WILL CAUSE FROST IN THE GROUND, BLANKETS NEED TO BE PLACED OVER THE SUB-BASE/SUB-GRADE TO PREVENT FREEZING PRIOR TO PLACING THE CONCRETE
4. BROOM FINISH THE CONCRETE
 APPLY WHITE PIGMENT SEALER
 APPLY A DOUBLE COAT OF SEALER FROM SEPT. 1 THROUGH MARCH 31 TO PROTECT AGAINST WINTER SALT
5. RESTORE YARD AREAS WITH 4" OF CLEAN TOPSOIL, INDOT TYPE 'U' WITHOUT CLOVER, COVER WITH EROSION CONTROL BLANKET. THE CONTRACTOR IS RESPONSIBLE TO ACHIEVE 70% EVEN COVERAGE



MONOLITHIC SIDEWALK OR PATH WITH CURB

NOT TO SCALE

The City Of Goshen
 Department of Public Works & Safety
 Office of Engineering

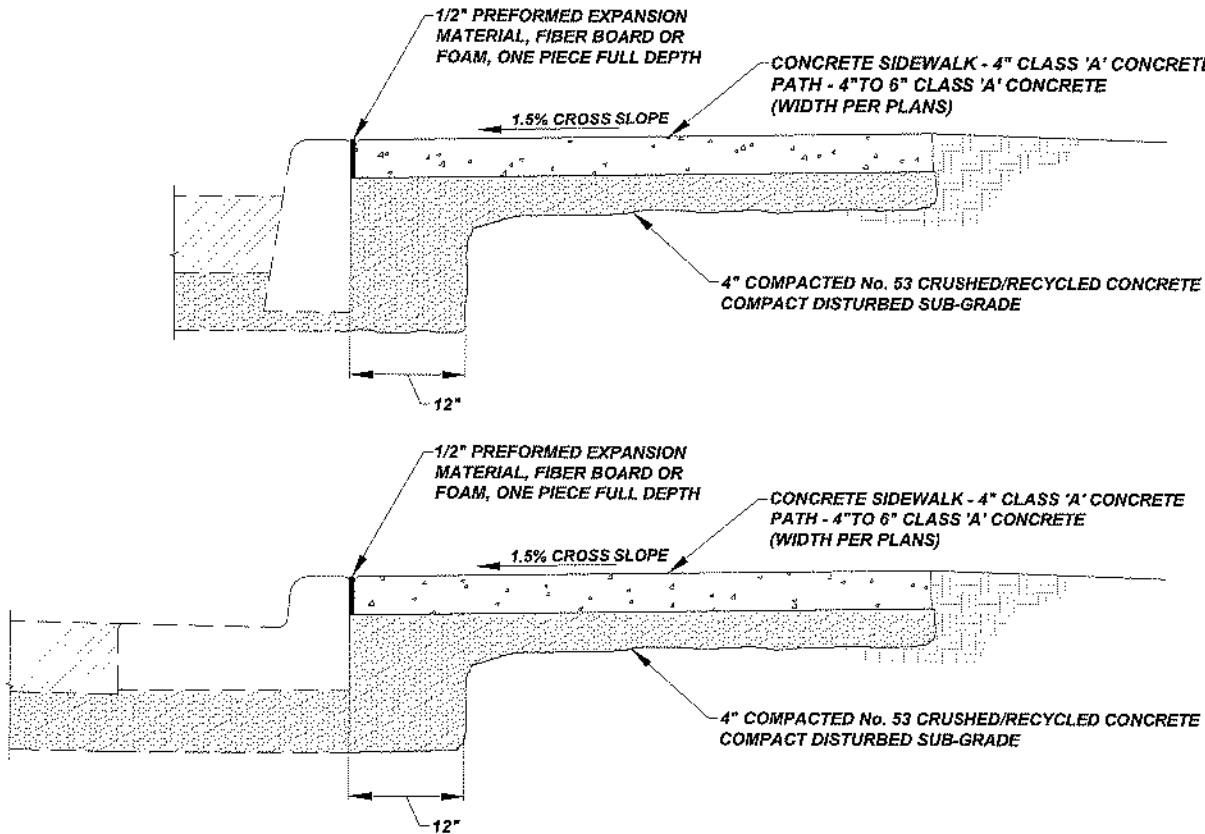
204 East Jefferson, Suite 1 Street, Goshen, Indiana 46528
 Phone: 574-534-2201 Fax: 574-533-8628
 Web: goshenindiana.org

Date Approved By The City Of Goshen Board Of Public Works & Safety and Approved Revisions

--	--	--	--	--	--

CITY OF GOSHEN, INDIANA
STANDARD DETAIL

Drafted By: J. Hoffman	Approved By: D. Sailor, P.E.
Drawing Number: RD-102	



NOTES:

1. CLASS 'A' CONCRETE, 4,000 PSI
2. EXPANSION JOINT LOCATIONS:
 STRAIGHT CURB SECTION - EVERY 40'
 ROADWAY CURVE - BEGINNING POINT, MID POINT, END POINT AND EVERY 40' ALONG CURVE
 INTERSECTION RADIUS - BEGINNING POINT, MID POINT, END POINT WITHOUT ADA RAMP OR SIDEWALK. EACH SIDE OF RAMP CURB CASTING - 4' FROM EACH SIDE OF THE CASTING
 EXPANSION MATERIAL MUST BE FULL DEPTH AND WIDTH OF CURB SECTION OR WILL REQUIRE REPLACED
3. CONTRACTION JOINT LOCATIONS:
 REQUIRED EVERY 10' AT 1/3 THE DEPTH, D/3, ALONG STRAIGHT CURB SECTIONS, ROADWAY CURVES AND INTERSECTION RADI
 SAW CUT CONTRACTION JOINTS WITHIN 24 HOURS OF PLACEMENT NO TOOLING OF CONTRACTIONS JOINTS IS ALLOWED
4. REMOVE ALL EXCESS MATERIAL ALONG THE FACE OF THE CURB PRIOR TO MATERIAL SETTING TO ALLOW A CLEAN VERTICAL FACE TO PAVE OR POUR AGAINST. REMOVE EXCESS MATERIAL ALONG BACKSIDE OF CURB, AT DRIVE APPROACHES AND SIDEWALKS, TO ALLOW A CLEAN VERTICAL FACE FOR EXPANSION MATERIAL BETWEEN CONCRETE POURS
6. THE SUB-BASE/SUB-GRADE CAN NOT BE FROZEN OR WET WHEN THE CONCRETE IS PLACED. IF THE TEMPERATURES WILL CAUSE FROST IN THE GROUND, BLANKETS NEED TO BE PLACED OVER THE SUB-BASE/SUB-GRADE TO PREVENT FREEZING PRIOR TO PLACING THE CONCRETE
4. BROOM FINISH THE CONCRETE
 APPLY WHITE PIGMENT SEALER
 APPLY A DOUBLE COAT OF SEALER FROM SEPT. 1 THROUGH MARCH 31 TO PROTECT AGAINST WINTER SALT
5. RESTORE YARD AREAS WITH 4" OF CLEAN TOPSOIL, TYPE 'U' SEED WITHOUT CLOVER, COVER WITH EROSION CONTROL BLANKET. THE CONTRACTOR IS RESPONSIBLE TO ACHIEVE 70% EVEN COVERAGE

SIDEWALK OR PATH ADJACENT TO CONCRETE CURB

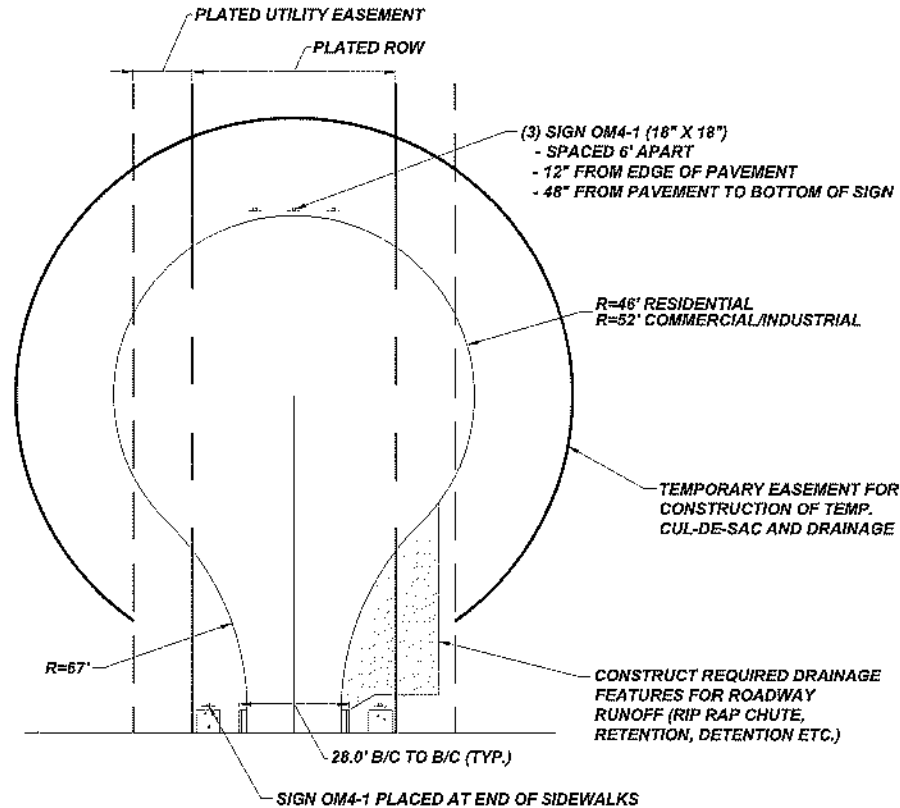
NOT TO SCALE

The City Of Goshen
 Department of Public Works & Safety
 Office of Engineering
 204 East Jefferson, Suite 1 Street, Goshen, Indiana 46528
 Phone: 574-534-2201 Fax: 574-533-8626
 Web: goshenindiana.org

Date Approved By The City Of Goshen Board Of Public Works & Safety and Approved Revisions				

CITY OF GOSHEN, INDIANA
STANDARD DETAIL

Drafted By: J. Hoffman	Approved By: D. Sailor, P.E.
Drawing Number: RD-103	



NOTES:

1. **TEMPORARY CUL-DE-SAC SECTION:**
 1.5" HMA SURFACE OVER
 3.0 HMA BASE OVER
 4.0" No. 53 RECYCLED/CRUSHED CONCRETE
2. ALL ROADWAY RUNOFF REACHING THE TEMPORARY CUL-DE-SAC MUST BE ACCOUNTED FOR WITH PROPER DRAINAGE FEATURES CONSTRUCTED TO CONTAIN THE RUNOFF. NO IMPACT TO SURROUNDING PROPERTIES WILL NOT BE ALLOWED
3. PLACE SIGN OM4-1 AT THE END OF SIDEWALKS AND PATHS TERMINATING AT THE TEMPORARY CUL-DE-SAC
4. PLACE SIGN OM4-1 AT THE END OF THE TEMPORARY CUL-DE-SAC AS SHOWN IN THE DETAIL
5. THE DEVELOPER WILL BE REQUIRED TO MAINTAIN ALL ITEMS WITHIN THE TEMPORARY CUL-DE-SAC, INCLUDING PAVEMENT, DRAINAGE, VEGETATION, SIGNS AND SNOW REMOVAL

TEMPORARY RESIDENTIAL CUL-DE-SAC

NOT TO SCALE

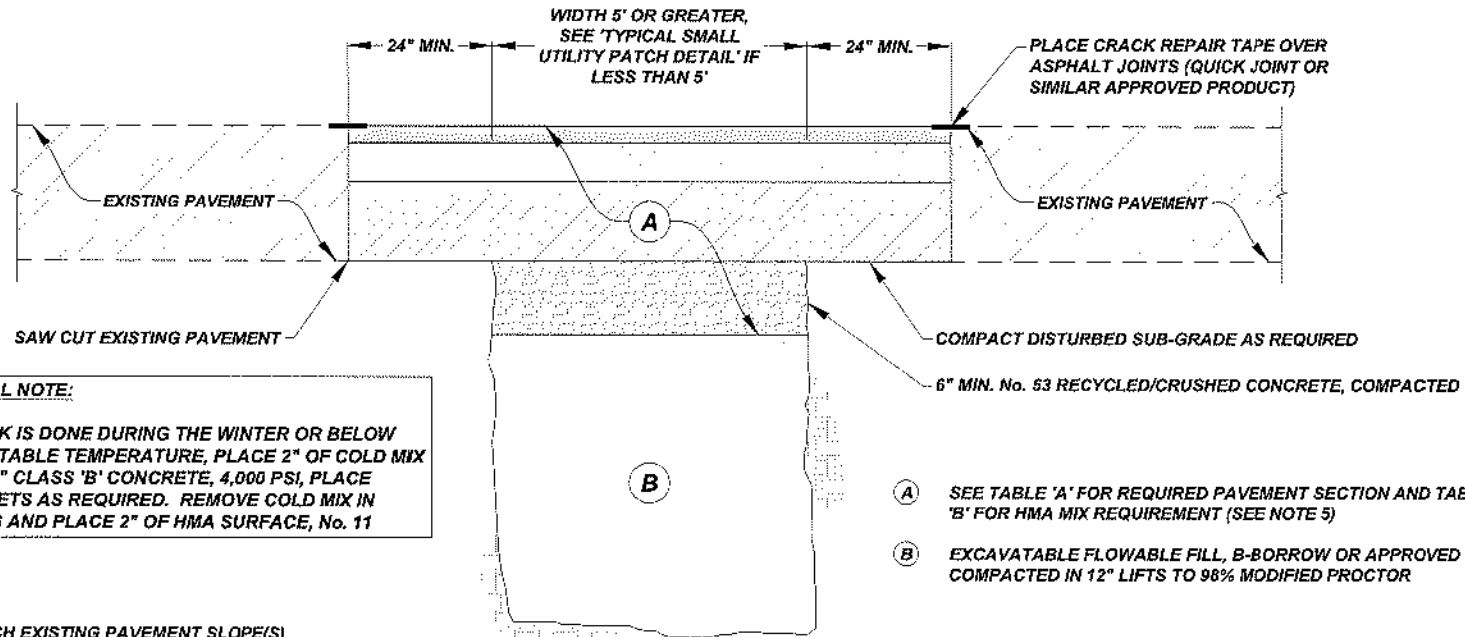
Date Approved By The City Of Goshen Board Of Public Works & Safety and Approved Revisions				

**CITY OF GOSHEN, INDIANA
STANDARD DETAIL**

Drafted By: J. Hoffman	Approved By: D. Salior, P.E.
Drawing Number: RD-104	

The City Of Goshen
 Department of Public Works & Safety
 Office of Engineering

204 East Jefferson, Suite 1 Street, Goshen, Indiana 46528
 Phone: 574-534-2201 Fax: 574-533-8628
 Web: goshenindiana.org



SPECIAL NOTE:
 IF WORK IS DONE DURING THE WINTER OR BELOW ACCEPTABLE TEMPERATURE, PLACE 2" OF COLD MIX OVER 6" CLASS 'B' CONCRETE, 4,000 PSI, PLACE BLANKETS AS REQUIRED. REMOVE COLD MIX IN SPRING AND PLACE 2" OF HMA SURFACE, No. 11

- Ⓐ SEE TABLE 'A' FOR REQUIRED PAVEMENT SECTION AND TABLE 'B' FOR HMA MIX REQUIREMENT (SEE NOTE 5)
- Ⓑ EXCAVATABLE FLOWABLE FILL, B-BORROW OR APPROVED SPOILS COMPACTED IN 12" LIFTS TO 98% MODIFIED PROCTOR

NOTES:

1. MATCH EXISTING PAVEMENT SLOPE(S)
2. SAW CUT EXISTING PAVEMENT PRIOR TO REMOVAL TO PROVIDE A CLEAN VERTICAL FACE. SAW CUT EDGE(S) AGAIN IF DAMAGED PRIOR TO PLACING PATCH. IF THE HMA SURFACE HAS BEEN DAMAGED BEYOND THE SAW CUT(S) AND/OR MATERIAL HAS BEEN LOST UNDER THE EXISTING PAVEMENT, INCREASE THE PATCH DIMENSIONS TO INCLUDE THESE AREAS
3. TRENCH SPOILS TO BE REMOVED FROM SITE IF UNSUITABLE FOR BACKFILL. A CITY REPRESENTATIVE SHALL DETERMINE IF SPOILS ARE SUITABLE FOR BACKFILL
4. PATCH MAY BE MODIFIED TO CONTAIN ONLY HMA BASE AND HMA SURFACE. REMOVAL OF THE HMA BINDER LAYER MAY BE ELIMINATED WITH APPROVAL FROM THE CITY ENGINEERING DEPARTMENT. HMA BASE LIFTS MAY NOT EXCEED 4"
5. COMPACT THE HMA BASE, HMA BINDER AND HMA SURFACE WITH A DOUBLE DRUM ROLLER UNLESS AN ALTERNATIVE METHOD HAS BEEN APPROVED BY THE ENGINEERING DEPARTMENT
6. RESTORE DAMAGED OR REMOVED PAVEMENT MARKINGS WITH LIKE MATERIAL. A CITY REPRESENTATIVE SHALL APPROVE MATERIAL AND METHOD OF INSTALLATION
7. STREET RESTRICTIONS OR CLOSURES FOR COLLECTOR OR ARTERIAL ROADWAY MUST BE APPROVED BY THE CITY BOARD OF WORKS. CONTACT THE CITY ENGINEERING DEPARTMENT AT (574) 534-2201 FOR THE SUBMITTAL REQUIREMENTS AND DATES FOR THE BOARD OF WORKS MEETING
8. WORK WITHIN THE CITY RIGHT OF WAY REQUIRES A PERMIT ISSUED BY THE CITY ENGINEERING DEPARTMENT AT, ACCESS THE CITY'S PERMIT PORTAL AT GOSHENINDIANA.ORG
9. A CITY REPRESENTATIVE MUST INSPECT THE BACKFILL PROCESS AND PLACEMENT OF THE PATCH CALL THE CITY ENGINEERING DEPARTMENT TO SCHEDULE THE INSPECTIONS AT (574) 534-2201
10. IF A CITY UTILITY WAS REPAIRED AS PART OF THE WORK, A CITY REPRESENTATIVE MUST INSPECT THE REPAIR PRIOR TO BACKFILLING. IF AN INSPECTION WAS NOT PERFORMED, THE CONTRACTOR WILL BE REQUIRED TO EXPOSE THE REPAIR FOR INSPECTION

LARGE ASPHALT PAVEMENT PATCH

NOT TO SCALE

The City Of Goshen
 Department of Public Works & Safety
 Office of Engineering
 204 East Jefferson, Suite 1 Street, Goshen, Indiana 46528
 Phone: 574-534-2201 Fax: 574-533-8626
 Web: goshenindiana.org

Date Approved By The City Of Goshen Board Of Public Works & Safety and Approved Revisions				

CITY OF GOSHEN, INDIANA
STANDARD DETAIL

Drawn By: J. Hoffman
 Approved By: D. Saltor, P.E.
 Drawing Number: **RD-201**

TABLE 'A' - MINIMUM ACCEPTABLE PAVEMENT SECTION

STREET CLASS	COMPACTED SUB-BASE (No. 53)	HOT MIX ASPHALT (HMA)			CONCRETE (PCC)	
		BASE (No. 5)	BINDER (No. 8)	SURFACE (No. 11)		
FLEXIBLE	MINOR ARTERIAL	6"	6"	2.5"	1.5"	-
	COLLECTOR & INDUSTRIAL	6"	4"	2.5"	1.5"	-
	LOCAL	6"	3"	2.5"	1.5"	-
RIGID	MINOR ARTERIAL	6"	-	-	-	9"
	COLLECTOR & INDUSTRIAL	6"	-	-	-	9"
	LOCAL	6"	-	-	-	6"

TABLE 'B' - AGGREGATE GRADATION FOR HMA MIXES

SIEVE SIZE	BASE MIXTURES No. 5 (3"-4" LIFT)	BINDER MIXTURES No. 8 (2.5" LIFT)	SURFACE MIXTURES No. 11 (1.5" LIFT)
1.5 in (37.5 mm)	100		
1 in (25.0 mm)	90 - 99	100	
3/4 in (19.0 mm)	<90	90 - 99	
1/2 in (12.5 mm)		<90	100
3/8 in (9.5 mm)			90 - 99
No. 4			<90
No. 8	23 (±6)	29 (±6)	57 (±6)
No. 16			
No. 30			
No. 50			
No. 100			
No. 200	1 - 7	2 - 8	2 - 6
PERCENT OF BITUMINOUS	4.5 (±0.5)	4.8 (±0.5)	6.1 (±0.5)
PERCENT OF MOISTURE, MAX	0.3	0.3	0.3

The City Of Goshen
 Department of Public Works & Safety
 Office of Engineering

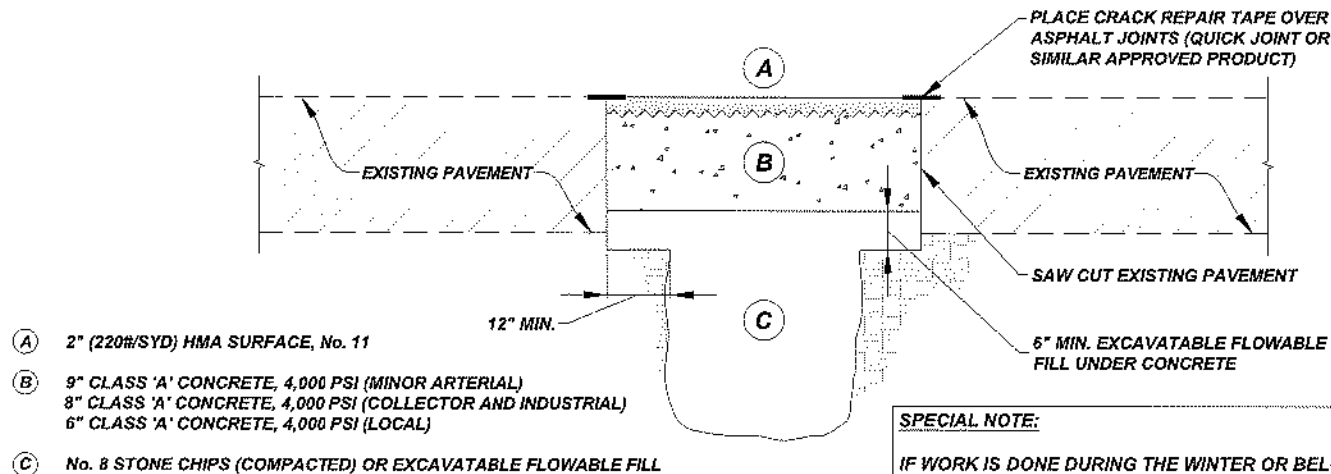
204 East Jefferson, Suite 1 Street, Goshen, Indiana 46528
 Phone: 574-534-2201 Fax: 574-533-8626
 Web: gosheninindiana.org

Date Approved By The City Of Goshen Board Of Public Works & Safety and Approved Revisions

--	--	--	--	--	--

CITY OF GOSHEN, INDIANA
STANDARD DETAIL

Drawn By: J. Hoffman
 Approved By: D. Sailor, P.E.
 Drawing Number: **RD-201**



- (A) 2" (220#/SYD) HMA SURFACE, No. 11
- (B) 9" CLASS 'A' CONCRETE, 4,000 PSI (MINOR ARTERIAL)
8" CLASS 'A' CONCRETE, 4,000 PSI (COLLECTOR AND INDUSTRIAL)
6" CLASS 'A' CONCRETE, 4,000 PSI (LOCAL)
- (C) No. 8 STONE CHIPS (COMPACTED) OR EXCAVATABLE FLOWABLE FILL

SPECIAL NOTE:
IF WORK IS DONE DURING THE WINTER OR BELOW ACCEPTABLE TEMPERATURE, PLACE 2" OF COLD MIX OVER 6" CLASS 'B' CONCRETE, 4,000 PSI, PLACE BLANKETS AS REQUIRED. REMOVE COLD MIX IN SPRING AND PLACE 2" OF HMA SURFACE, No. 11

NOTES:

1. MATCH EXISTING PAVEMENT SLOPE(S)
2. SAW CUT EXISTING PAVEMENT PRIOR TO REMOVAL TO PROVIDE A CLEAN VERTICAL FACE. SAW CUT EDGE(S) AGAIN IF DAMAGED PRIOR TO PLACING PATCH. IF THE HMA SURFACE HAS BEEN DAMAGED BEYOND THE SAW CUT(S) AND/OR MATERIAL HAS BEEN LOST UNDER THE EXISTING PAVEMENT, INCREASE THE PATCH DIMENSIONS TO INCLUDE THESE AREAS
3. TRENCH SPOILS TO BE REMOVED FROM SITE IF UNSUITABLE FOR BACKFILL. A CITY REPRESENTATIVE SHALL DETERMINE IF SPOILS ARE SUITABLE FOR BACKFILL
4. PATCH MAY BE MODIFIED TO CONTAIN ONLY HMA BASE AND HMA SURFACE. REMOVAL OF THE HMA BINDER LAYER MAY BE ELIMINATED WITH APPROVAL FROM THE CITY ENGINEERING DEPARTMENT. HMA BASE LIFTS MAY NOT EXCEED 4"
5. COMPACT THE HMA BASE, HMA BINDER AND HMA SURFACE WITH A DOUBLE DRUM ROLLER UNLESS AN ALTERNATIVE METHOD HAS BEEN APPROVED BY THE ENGINEERING DEPARTMENT
6. RESTORE DAMAGED OR REMOVED PAVEMENT MARKINGS WITH LIKE MATERIAL. A CITY REPRESENTATIVE SHALL APPROVE MATERIAL AND METHOD OF INSTALLATION
7. STREET RESTRICTIONS OR CLOSURES FOR COLLECTOR OR ARTERIAL ROADWAY MUST BE APPROVED BY THE CITY BOARD OF WORKS. CONTACT THE CITY ENGINEERING DEPARTMENT AT (574) 534-2201 FOR THE SUBMITTAL REQUIREMENTS AND DATES FOR THE BOARD OF WORKS MEETING
8. WORK WITHIN THE CITY RIGHT OF WAY REQUIRES A PERMIT ISSUED BY THE CITY ENGINEERING DEPARTMENT AT, ACCESS THE CITY'S PERMIT PORTAL AT GOSHENINDIANA.ORG
9. A CITY REPRESENTATIVE MUST INSPECT THE BACKFILL PROCESS AND PLACEMENT OF THE PATCH CALL THE CITY ENGINEERING DEPARTMENT TO SCHEDULE THE INSPECTIONS AT (574) 534-2201
10. IF A CITY UTILITY WAS REPAIRED AS PART OF THE WORK, A CITY REPRESENTATIVE MUST INSPECT THE REPAIR PRIOR TO BACKFILLING. IF AN INSPECTION WAS NOT PERFORMED, THE CONTRACTOR WILL BE REQUIRED TO EXPOSE THE REPAIR FOR INSPECTION

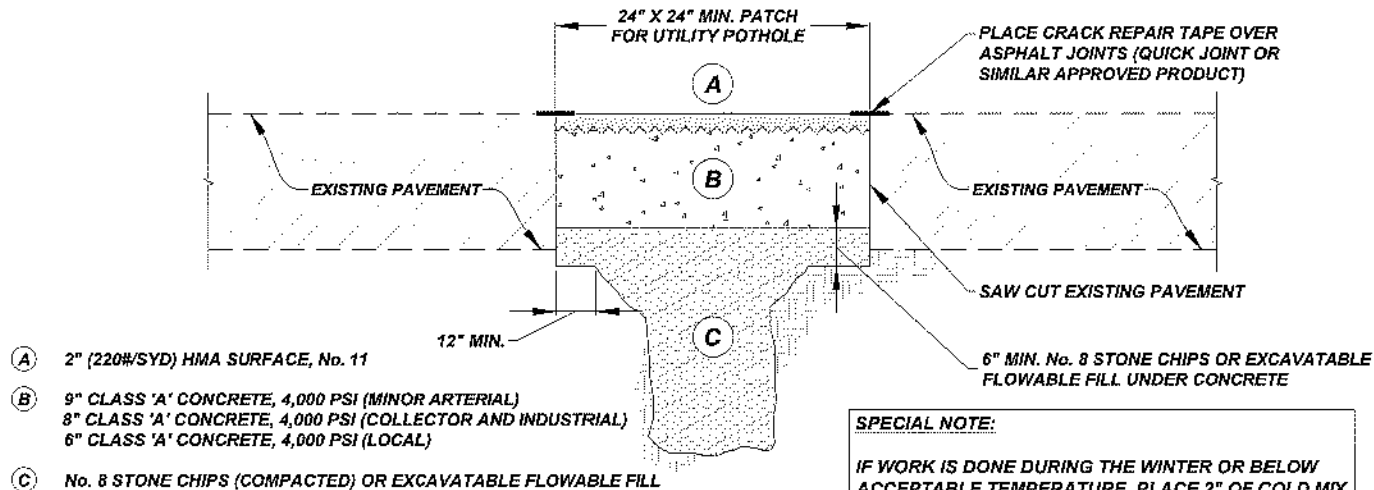
SMALL ASPHALT PAVEMENT PATCH
NOT TO SCALE

The City Of Goshen
Department of Public Works & Safety
Office of Engineering
204 East Jefferson, Suite 1 Street, Goshen, Indiana 46528
Phone: 574-534-2201 Fax: 574-533-8626
Web: goshenindiana.org

Date Approved By The City Of Goshen Board Of Public Works & Safety and Approved Revisions				

CITY OF GOSHEN, INDIANA
STANDARD DETAIL

Drafted By: J. Hoffman	Approved By: D. Sailor, P.E.
Drawing Number: RD-202	



SPECIAL NOTE:
 IF WORK IS DONE DURING THE WINTER OR BELOW ACCEPTABLE TEMPERATURE, PLACE 2" OF COLD MIX OVER 6" CLASS 'B' CONCRETE, 4,000 PSI, PLACE BLANKETS AS REQUIRED. REMOVE COLD MIX IN SPRING AND PLACE 2" OF HMA SURFACE, No. 11

NOTES:

- MATCH EXISTING PAVEMENT SLOPE(S)
- SAW CUT EXISTING PAVEMENT PRIOR TO REMOVAL TO PROVIDE A CLEAN VERTICAL FACE. SAW CUT EDGE(S) AGAIN IF DAMAGED PRIOR TO PLACING PATCH. IF THE HMA SURFACE HAS BEEN DAMAGED BEYOND THE SAW CUT(S) AND/OR MATERIAL HAS BEEN LOST UNDER THE EXISTING PAVEMENT, INCREASE THE PATCH DIMENSIONS TO INCLUDE THESE AREAS
- TRENCH SPOILS TO BE REMOVED FROM SITE IF UNSUITABLE FOR BACKFILL. A CITY REPRESENTATIVE SHALL DETERMINE IF SPOILS ARE SUITABLE FOR BACKFILL
- PATCH MAY BE MODIFIED TO CONTAIN ONLY HMA BASE AND HMA SURFACE. REMOVAL OF THE HMA BINDER LAYER MAY BE ELIMINATED WITH APPROVAL FROM THE CITY ENGINEERING DEPARTMENT. HMA BASE LIFTS MAY NOT EXCEED 4"
- COMPACT THE HMA BASE, HMA BINDER AND HMA SURFACE WITH A DOUBLE DRUM ROLLER UNLESS AN ALTERNATIVE METHOD HAS BEEN APPROVED BY THE ENGINEERING DEPARTMENT
- RESTORE DAMAGED OR REMOVED PAVEMENT MARKINGS WITH LIKE MATERIAL. A CITY REPRESENTATIVE SHALL APPROVE MATERIAL AND METHOD OF INSTALLATION
- STREET RESTRICTIONS OR CLOSURES FOR COLLECTOR OR ARTERIAL ROADWAY MUST BE APPROVED BY THE CITY BOARD OF WORKS. CONTACT THE CITY ENGINEERING DEPARTMENT AT (574) 534-2201 FOR THE SUBMITTAL REQUIREMENTS AND DATES FOR THE BOARD OF WORKS MEETING
- WORK WITHIN THE CITY RIGHT OF WAY REQUIRES A PERMIT ISSUED BY THE CITY ENGINEERING DEPARTMENT AT, ACCESS THE CITY'S PERMIT PORTAL AT GOSHENINDIANA.ORG
- A CITY REPRESENTATIVE MUST INSPECT THE BACKFILL PROCESS AND PLACEMENT OF THE PATCH CALL THE CITY ENGINEERING DEPARTMENT TO SCHEDULE THE INSPECTIONS AT (574) 534-2201
- IF A CITY UTILITY WAS REPAIRED AS PART OF THE WORK, A CITY REPRESENTATIVE MUST INSPECT THE REPAIR PRIOR TO BACKFILLING. IF AN INSPECTION WAS NOT PERFORMED, THE CONTRACTOR WILL BE REQUIRED TO EXPOSE THE REPAIR FOR INSPECTION

UTILITY POTHOLE ASPHALT PAVEMENT PATCH

NOT TO SCALE

The City Of Goshen
 Department of Public Works & Safety
 Office of Engineering

204 East Jefferson, Suite 1 Street, Goshen, Indiana 46528
 Phone: 574-534-2201 Fax: 574-533-6626
 Web: goshenindiana.org

Date Approved By The City Of Goshen Board Of Public Works & Safety and Approved Revisions				

CITY OF GOSHEN, INDIANA
STANDARD DETAIL

Drafted By: J. Hoffman	Approved By: D. Sailor, P.E.
Drawing Number: RD-203	

MIN. 100.0' FROM PUBLIC STREET

MIN. 150.0' MEASURED AT CENTERLINE OF DRIVES

WB-62 INTERSTATE SEMITRAILER

Interstate Semitrailer (WB-62) (2015/10/01) (JH/RAH)

RADIUS = MIN. 25' - MAX. 40'
MEASURED AT BACK OF CURB

MIN. 24' - MAX. 40' (THROAT WIDTH)

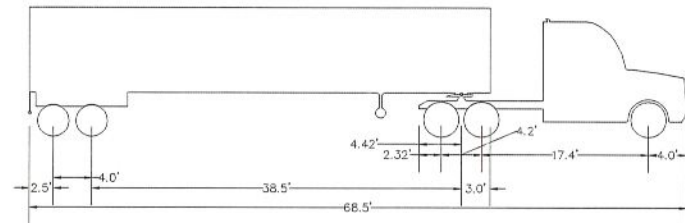
PUBLIC STREET

PUBLIC STREET

MEASURED AT END OF RADIUS (TANGENT POINT)

NOTE:

- 1. DIAGRAM SHOWN WITH 40' RADII AND 40' WIDE THROAT AT DRIVES



Name: Trailer 1 (L48)
 Width [ft]: 8.500
 Height [ft]: 13.500
 Front track [ft]: 8.500
 Back track [ft]: 8.500

Name: Interstate Semitrailer (WB-62)
 Width [ft]: 8.000
 Height [ft]: 12.395
 Front track [ft]: 8.000
 Back track [ft]: 6.000
 Total vehicle length [ft]: 68.500
 Average steering angle: 28.437°
 Turn time (sec.): 6.0
 Turning radius (curb to curb) [ft]: 44.508
 Turning radius (wall to wall) [ft]: 46.400

The City Of Goshen
 Department of Public Works & Safety
 Office of Engineering

COMMERCIAL/INDUSTRIAL DRIVE DIAGRAM

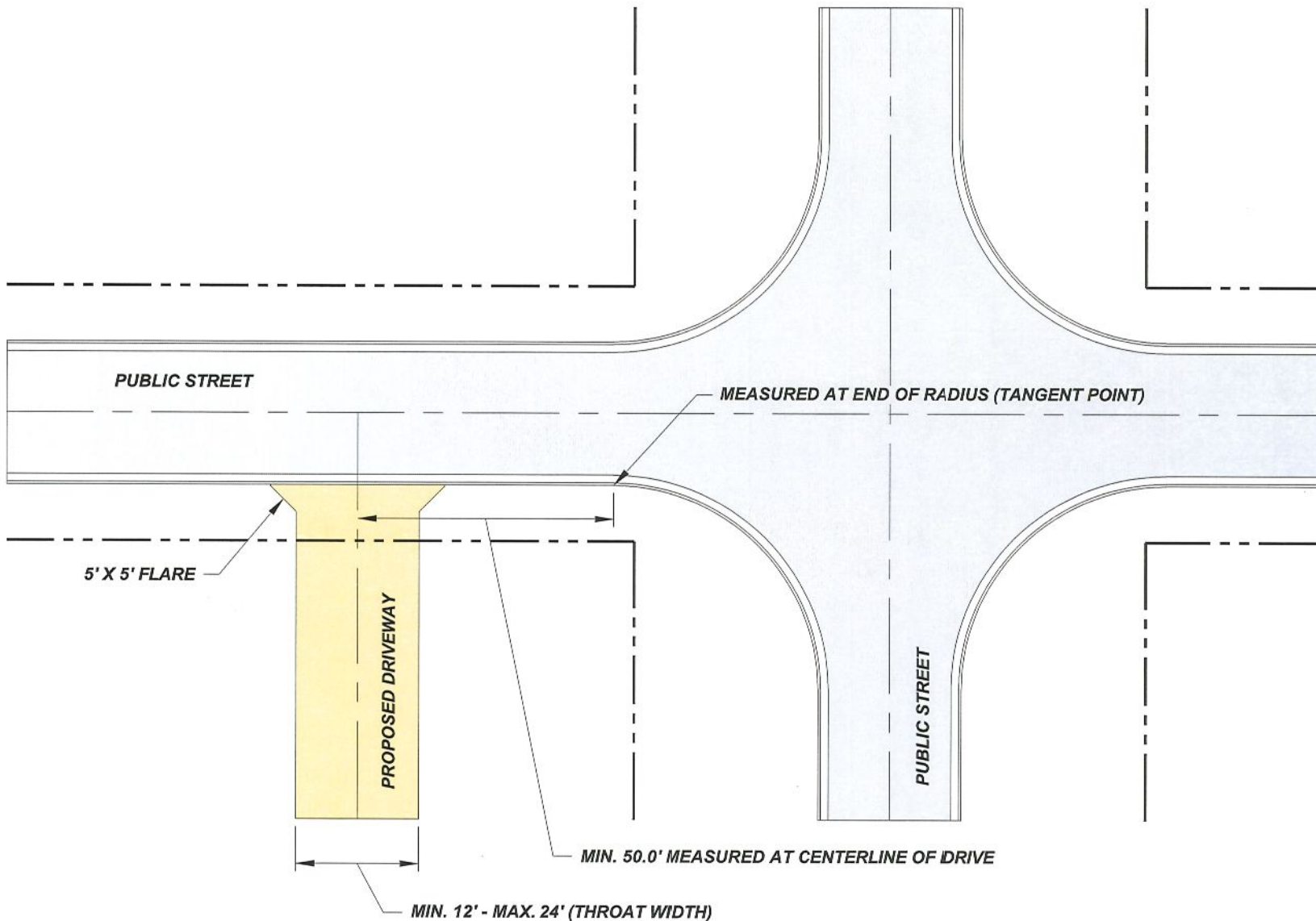
NOT TO SCALE

Date Approved By The City Of Goshen Board Of Public Works & Safety and Approved Revisions

204 East Jefferson, Suite 1 Street, Goshen, Indiana 46528
 Phone: 574-534-2201 Fax: 574-533-8626
 Web: goshenindiana.org

CITY OF GOSHEN, INDIANA
STANDARD DETAIL

Drafted By: J. Hoffman	Approved By: D. Sailor, P.E.
Drawing Number: RD-301	



RESIDENTIAL DRIVE DIAGRAM

NOT TO SCALE

Date Approved By The City Of Goshen Board Of Public Works & Safety and Approved Revisions

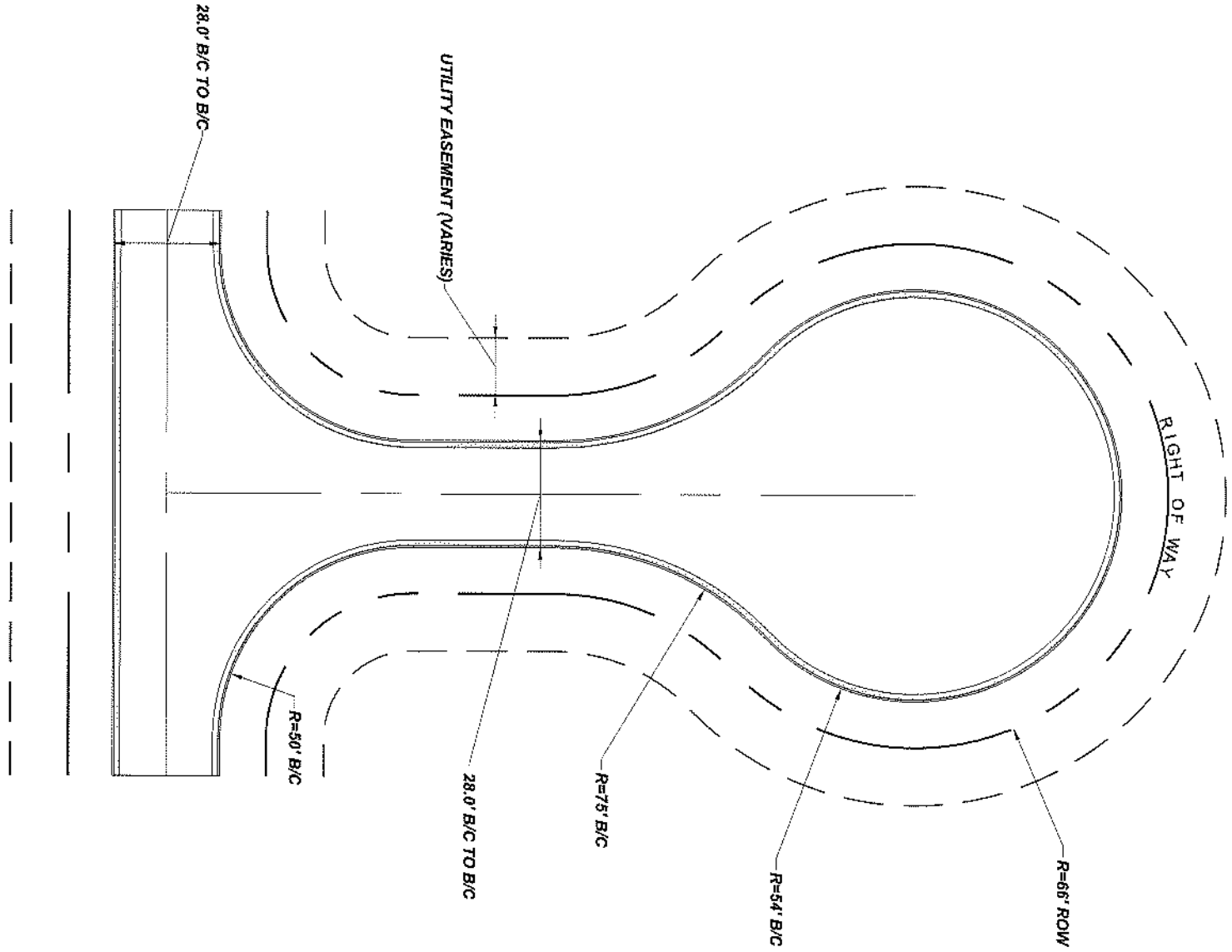
**CITY OF GOSHEN, INDIANA
STANDARD DETAIL**

<small>Drafted By:</small> J. Hoffman	<small>Approved By:</small> D. Sailor, P.E.
<small>Drawing Number:</small> RD-302	

The City Of Goshen
Department of Public Works & Safety
Office of Engineering

204 East Jefferson, Suite 1 Street, Goshen, Indiana 46528
Phone: 574-534-2201 Fax: 574-533-8626
Web: goshenindiana.org

COMMERCIAL/INDUSTRIAL CUL-DE-SAC LAYOUT
 NOT TO SCALE



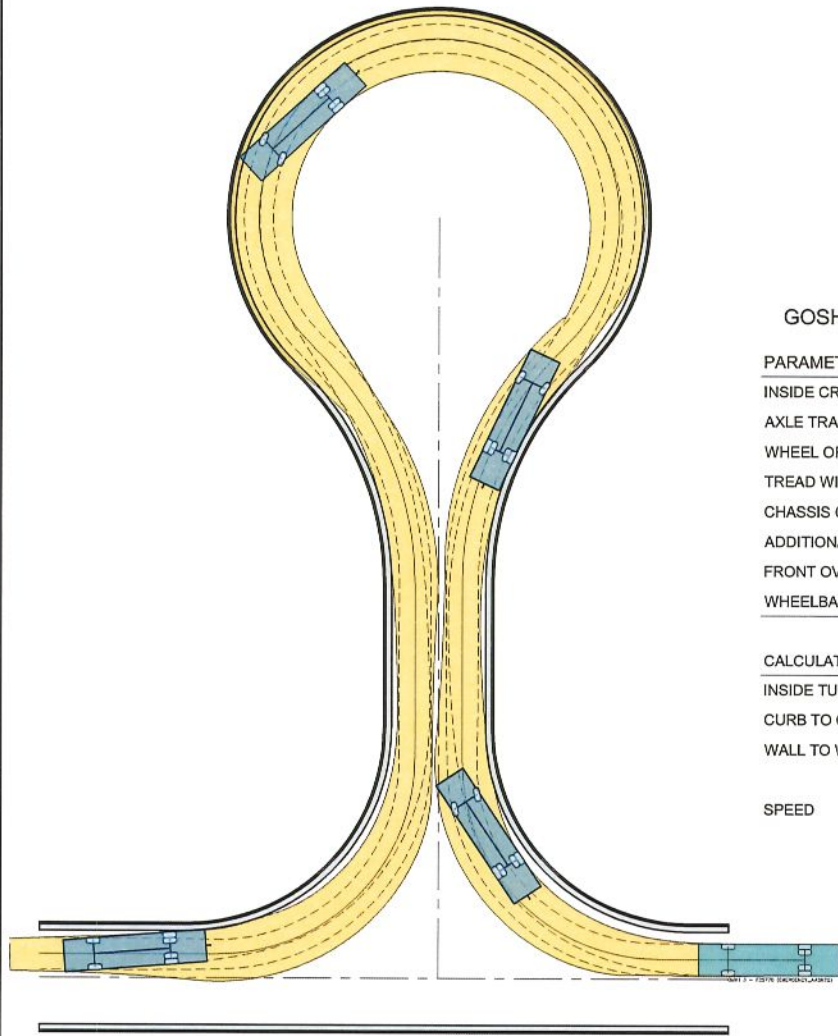
The City Of Goshen
 Department of Public Works & Safety
 Office of Engineering

204 East Jefferson, Suite 1 Street, Goshen, Indiana 46528
 Phone: 574-534-2201 Fax: 574-533-8626
 Web: goshenindiana.org

Date Approved By The City Of Goshen Board Of Public Works & Safety and Approved Revisions					

CITY OF GOSHEN, INDIANA
STANDARD DETAIL

Drafted By: J. Hoffman	Approved By: D. Sailor, P.E.
Drawing Number: RD-303	



GOSHEN FIRE DEPARTMENT - QUINT 3

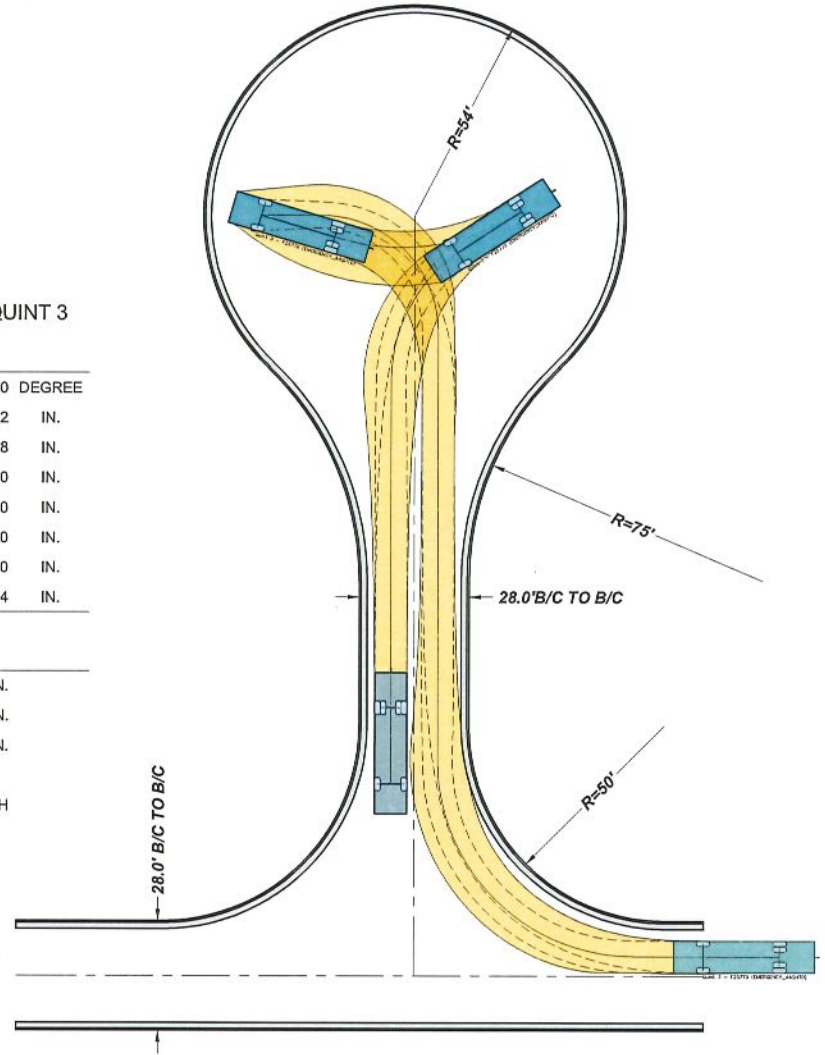
PARAMETERS

INSIDE CRAMP ANGLE:	45.00	DEGREE
AXLE TRACK:	82.92	IN.
WHEEL OFFSET:	4.68	IN.
TREAD WIDTH:	16.60	IN.
CHASSIS OVERHANG:	78.00	IN.
ADDITIONAL BUMPER DEPTH:	13.00	IN.
FRONT OVERHANG:	91.00	IN.
WHEELBASE:	234	IN.

CALCULATED TURNING RADII

INSIDE TURN:	18 FT. 5 IN.
CURB TO CURB	33 FT. 11 IN.
WALL TO WALL:	38 FT. 7 IN.

SPEED 10 MPH



COMMERCIAL/INDUSTRIAL CUL-DE-SAC WITH QUINT

NOT TO SCALE

Date Approved By The City Of Goshen Board Of Public Works & Safety and Approved Revisions

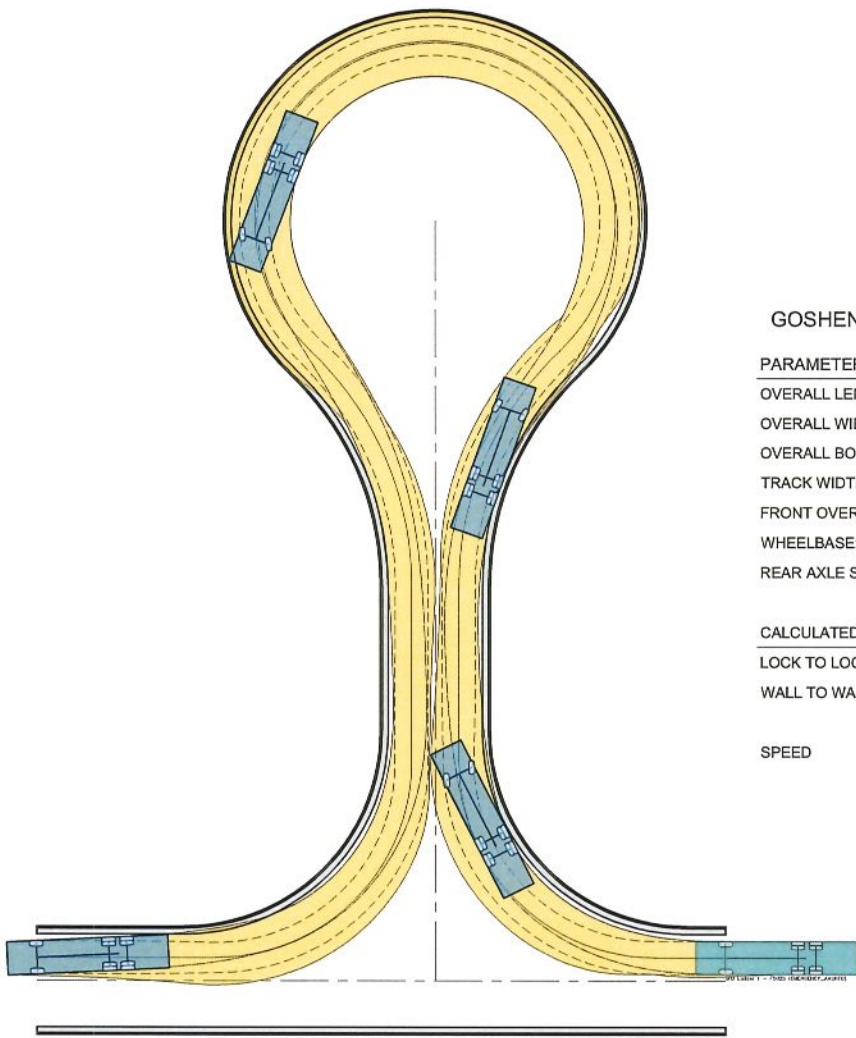
--	--	--	--	--	--

**CITY OF GOSHEN, INDIANA
STANDARD DETAIL**

Drafted By: J. Hoffman
Approved By: D. Sailor, P.E.
Drawing Number: RD-304

The City Of Goshen
Department of Public Works & Safety
Office of Engineering

204 East Jefferson, Suite 1 Street, Goshen, Indiana 46528
Phone: 574-534-2201 Fax: 574-533-8626
Web: goshenindiana.org



GOSHEN FIRE DEPARTMENT - LADDER 1

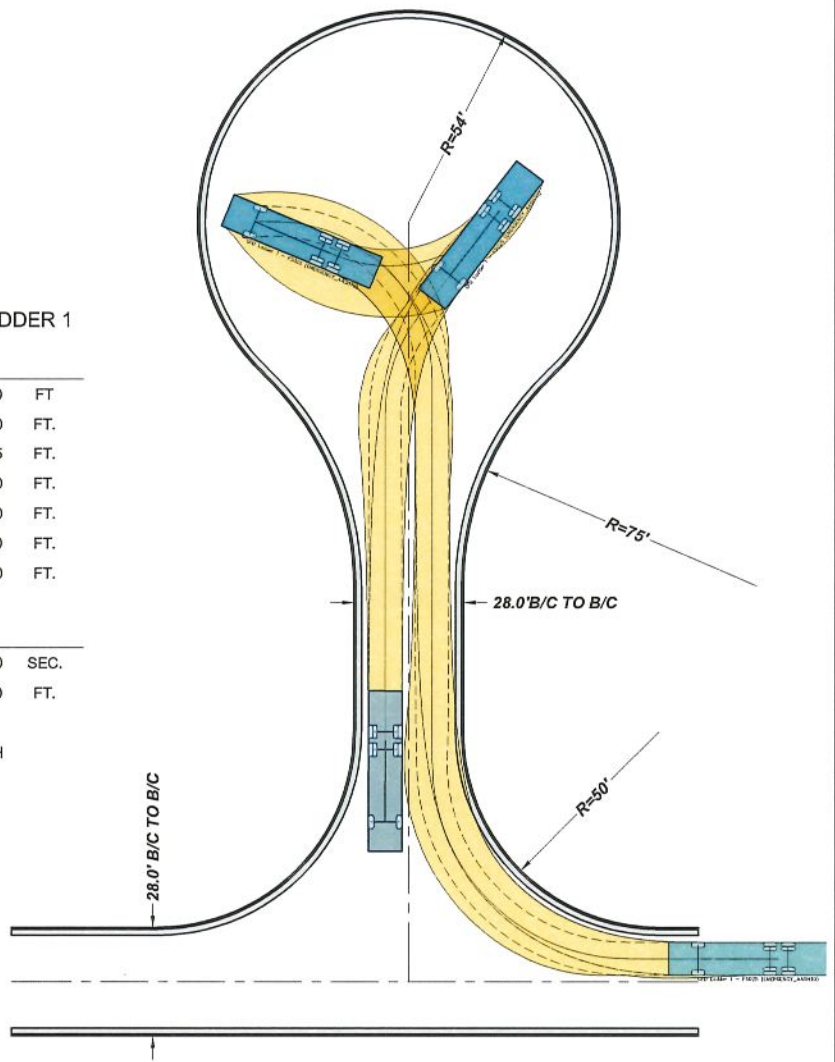
PARAMETERS

OVERALL LENGTH:	41.00	FT
OVERALL WIDTH:	8.50	FT.
OVERALL BODY HEIGHT:	10.25	FT.
TRACK WIDTH:	8.50	FT.
FRONT OVERHANG:	7.50	FT.
WHEELBASE:	18.40	FT.
REAR AXLE SPACING:	4.60	FT.

CALCULATED TURNING RADII

LOCK TO LOCK:	4.00	SEC.
WALL TO WALL:	48.50	FT.

SPEED 10 MPH



COMMERCIAL/INDUSTRIAL CUL-DE-SAC WITH LADDER 1

NOT TO SCALE

The City Of Goshen
 Department of Public Works & Safety
 Office of Engineering
 204 East Jefferson, Suite 1 Street, Goshen, Indiana 46528
 Phone: 574-534-2201 Fax: 574-533-8626
 Web: goshenindiana.org

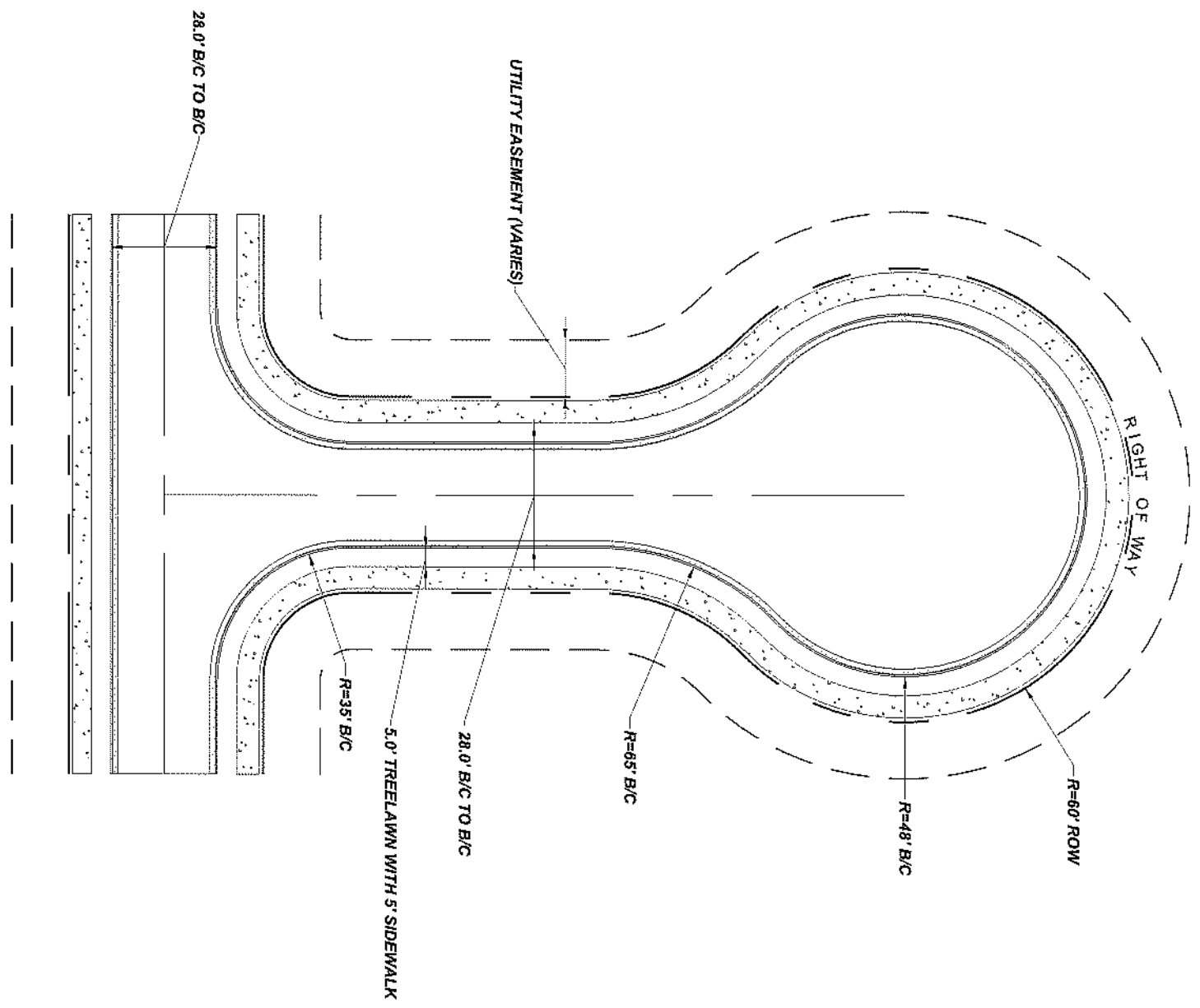
Date Approved By The City Of Goshen Board Of Public Works & Safety and Approved Revisions				

CITY OF GOSHEN, INDIANA
STANDARD DETAIL

Drafted By: J. Hoffman
 Approved By: D. Sailor, P.E.
 Drawing Number: **RD-305**

RESIDENTIAL CUL-DE-SAC LAYOUT

NOT TO SCALE



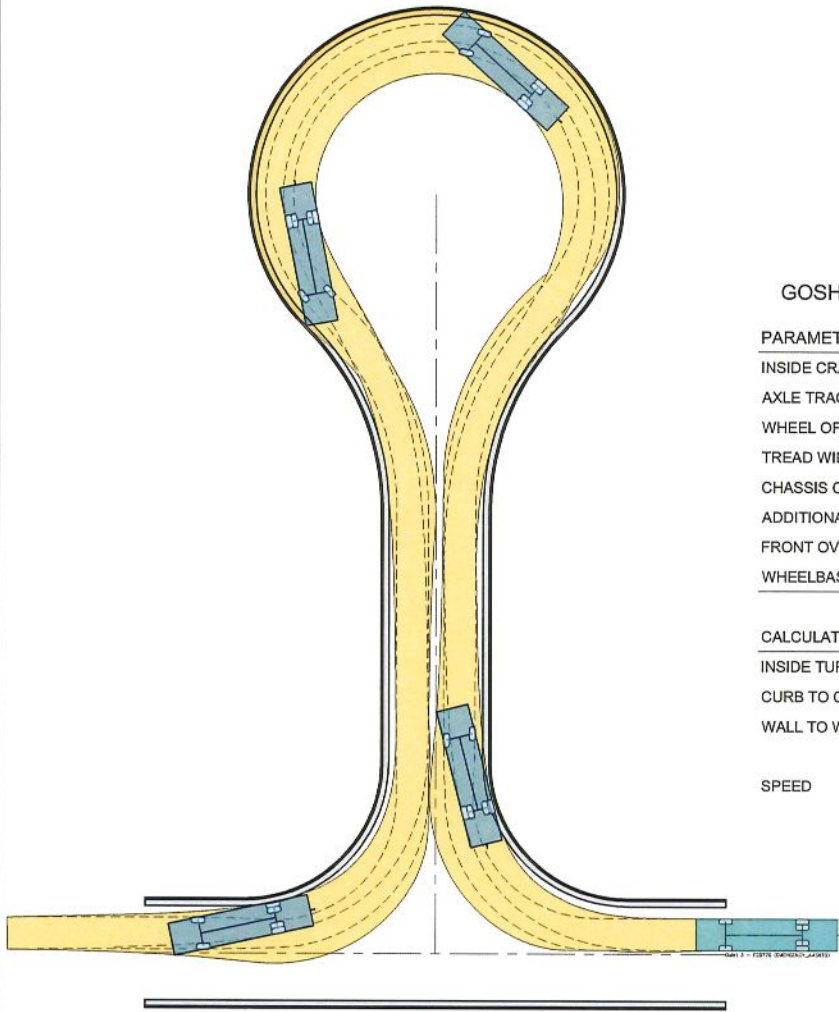
The City Of Goshen
 Department of Public Works & Safety
 Office of Engineering

204 East Jefferson, Suite 1 Street, Goshen, Indiana 46528
 Phone: 574-534-2201 Fax: 574-533-8625
 Web: goshenindiana.org

Date Approved By The City Of Goshen Board Of Public Works & Safety and Approved Revisions				

CITY OF GOSHEN, INDIANA
STANDARD DETAIL

Drafted By: J. Hoffman	Approved By: D. Sailor, P.E.
Drawing Number: RD-306	



GOSHEN FIRE DEPARTMENT - QUINT 3

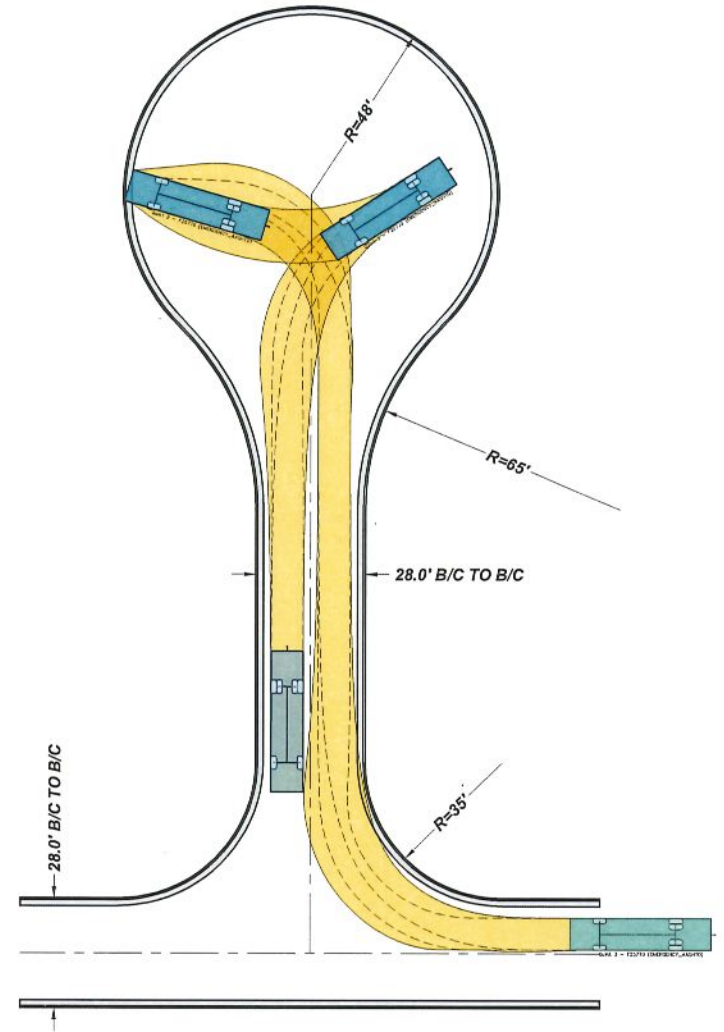
PARAMETERS

INSIDE CRAMP ANGLE:	45.00	DEGREE
AXLE TRACK:	82.92	IN.
WHEEL OFFSET:	4.68	IN.
TREAD WIDTH:	16.60	IN.
CHASSIS OVERHANG:	78.00	IN.
ADDITIONAL BUMPER DEPTH:	13.00	IN.
FRONT OVERHANG:	91.00	IN.
WHEELBASE:	234	IN.

CALCULATED TURNING RADII

INSIDE TURN:	18 FT. 5 IN.
CURB TO CURB	33 FT. 11 IN.
WALL TO WALL:	38 FT. 7 IN.

SPEED 10 MPH



RESIDENTIAL CUL-DE-SAC WITH QUINT

NOT TO SCALE

The City Of Goshen
 Department of Public Works & Safety
 Office of Engineering

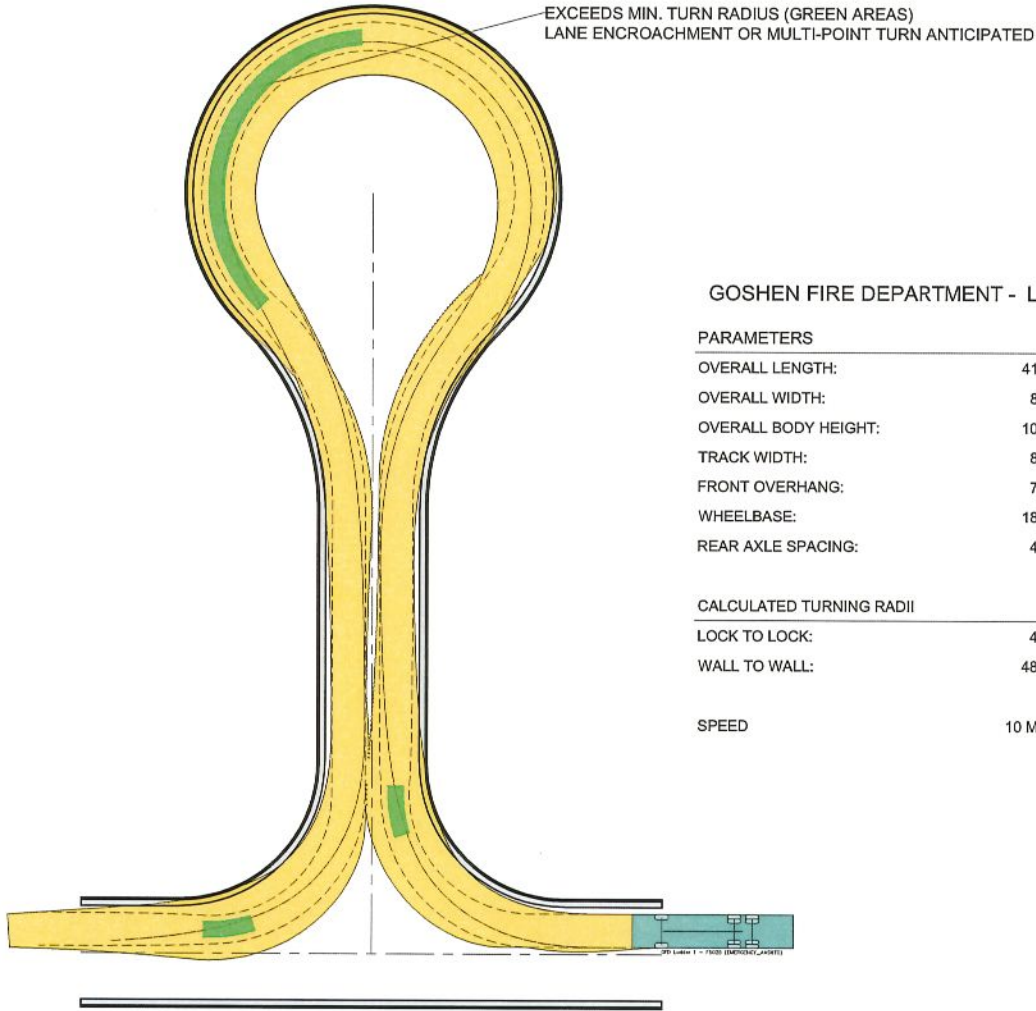
204 East Jefferson, Suite 1 Street, Goshen, Indiana 46528
 Phone: 574-534-2201 Fax: 574-533-8626
 Web: goshenindiana.org

Date Approved By The City Of Goshen Board Of Public Works & Safety and Approved Revisions

--	--	--	--	--	--

CITY OF GOSHEN, INDIANA
STANDARD DETAIL

Drafted By: J. Hoffman
 Approved By: D. Sailor, P.E.
 Drawing Number: RD-307



GOSHEN FIRE DEPARTMENT - LADDER 1

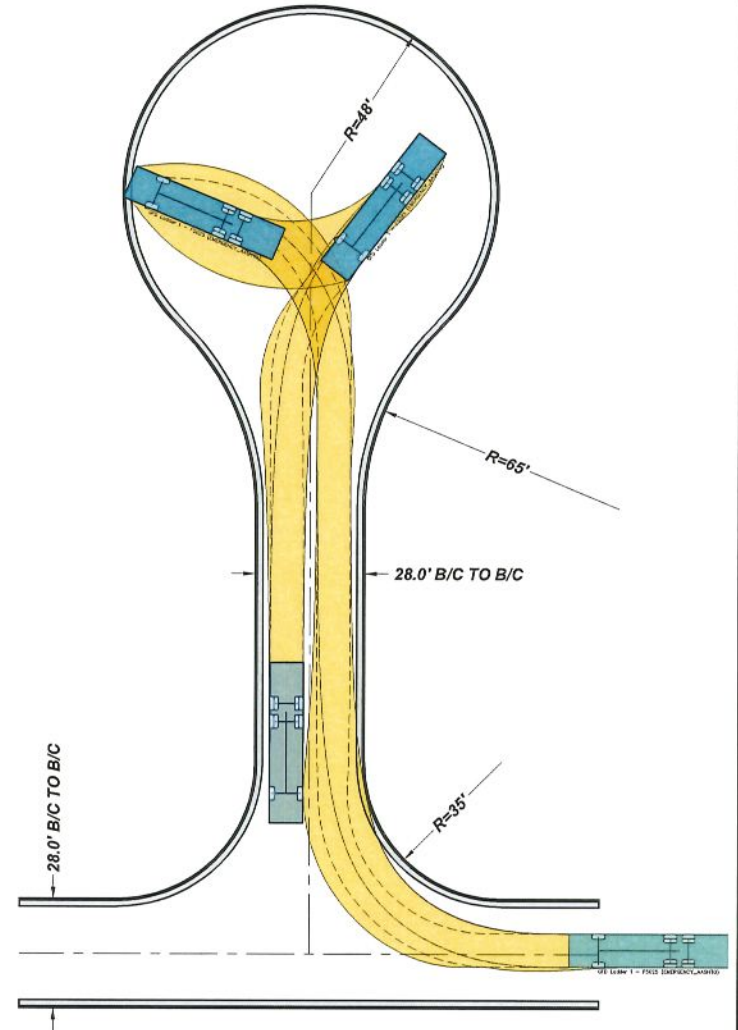
PARAMETERS

OVERALL LENGTH:	41.00	FT
OVERALL WIDTH:	8.50	FT.
OVERALL BODY HEIGHT:	10.25	FT.
TRACK WIDTH:	8.50	FT.
FRONT OVERHANG:	7.50	FT.
WHEELBASE:	18.40	FT.
REAR AXLE SPACING:	4.60	FT.

CALCULATED TURNING RADII

LOCK TO LOCK:	4.00	SEC.
WALL TO WALL:	48.50	FT.

SPEED 10 MPH



RESIDENTIAL CUL-DE-SAC WITH LADDER 1

NOT TO SCALE

The City Of Goshen
 Department of Public Works & Safety
 Office of Engineering

204 East Jefferson, Suite 1 Street, Goshen, Indiana 46528
 Phone: 574-534-2201 Fax: 574-533-8626
 Web: goshenindiana.org

Date Approved By The City Of Goshen Board Of Public Works & Safety and Approved Revisions

--	--	--	--	--	--

CITY OF GOSHEN, INDIANA
STANDARD DETAIL

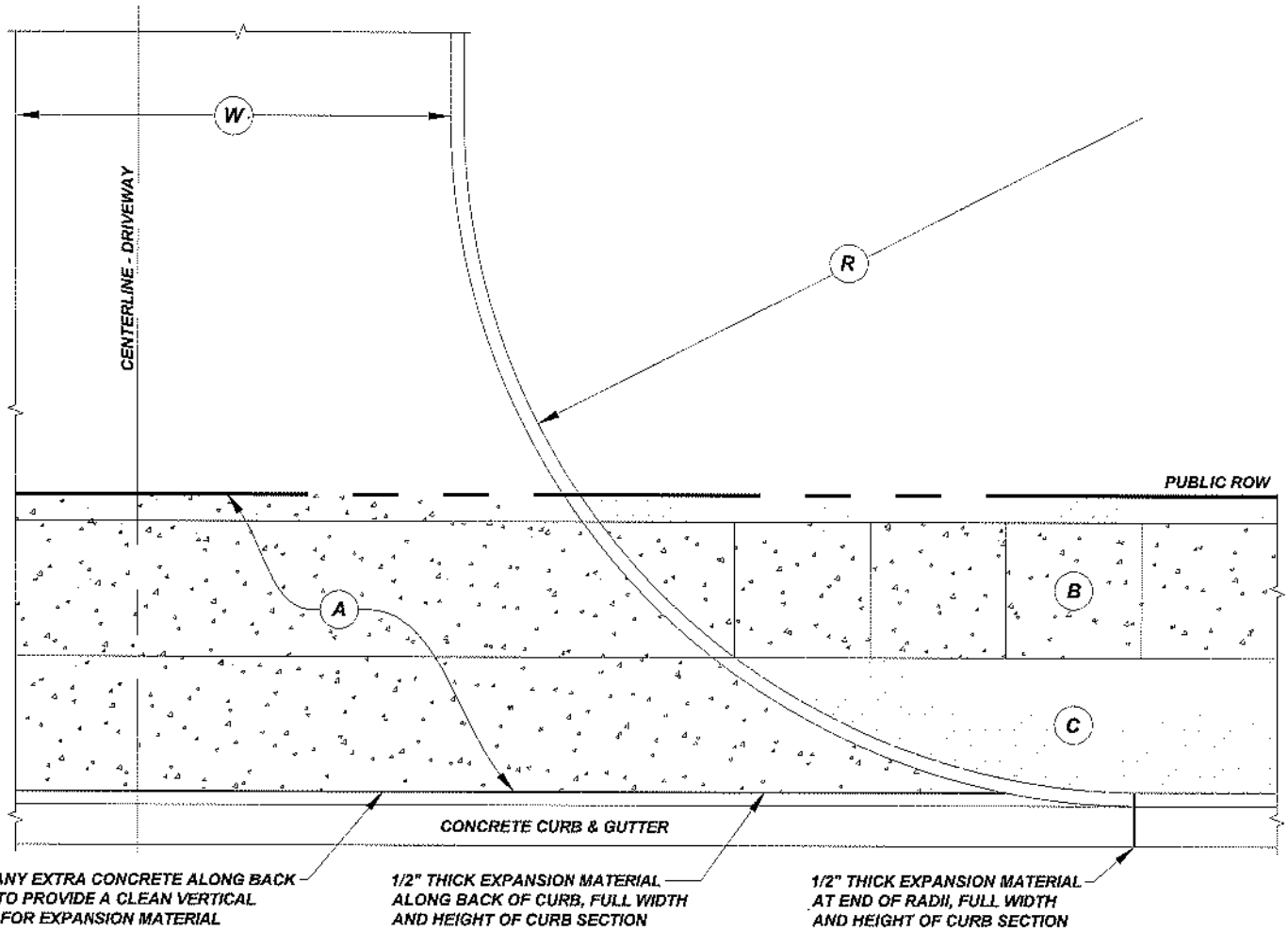
Drafted By: J. Hoffman
 Approved By: D. Sailor, P.E.

Drawing Number:
RD-308

COMMERCIAL AND INDUSTRIAL	
A	6" CLASS 'A' CONCRETE, 4,000 PSI (28 DAYS) REINFORCED WITH 4X4 W4.0/W4.0 OVER 6" COMPACTED No. 53 CRUSHED/RECYCLED CONCRETE
A	9" CLASS 'A' NON-REINFORCED CONCRETE, 4,000 PSI (28 DAYS) OVER 6" COMPACTED No. 53 CRUSHED/RECYCLED CONCRETE
B	4" CLASS 'A' CONCRETE, 4,000 PSI (28 DAYS) OVER 4" COMPACTED No. 53 CRUSHED/RECYCLED CONCRETE
C	4" CLEAN TOPSOIL, INDOT TYPE 'U' WITHOUT CLOVER, ACHIEVE 70% EVEN COVERAGE. COVER WITH EROSION CONTROL BLANKET
R	24.0' MINIMUM AND 40.0' MAXIMUM RADIUS, APPROVAL OF LARGER RADII BY CITY ENGINEERING DEPARTMENT
W	24.0' MINIMUM AND 40.0' MAXIMUM THROAT WIDTH

NOTE:

- FOR DRIVE APPROACH WIDTHS GREATER THAN THE 24' AND 40' MAXIMUM, THE PROPERTY OWNER WILL BE REQUIRED TO APPLY FOR A VARIANCE



COMMERCIAL/INDUSTRIAL DRIVEWAY LAYOUT

NOT TO SCALE

The City Of Goshen

Department of Public Works & Safety
Office of Engineering

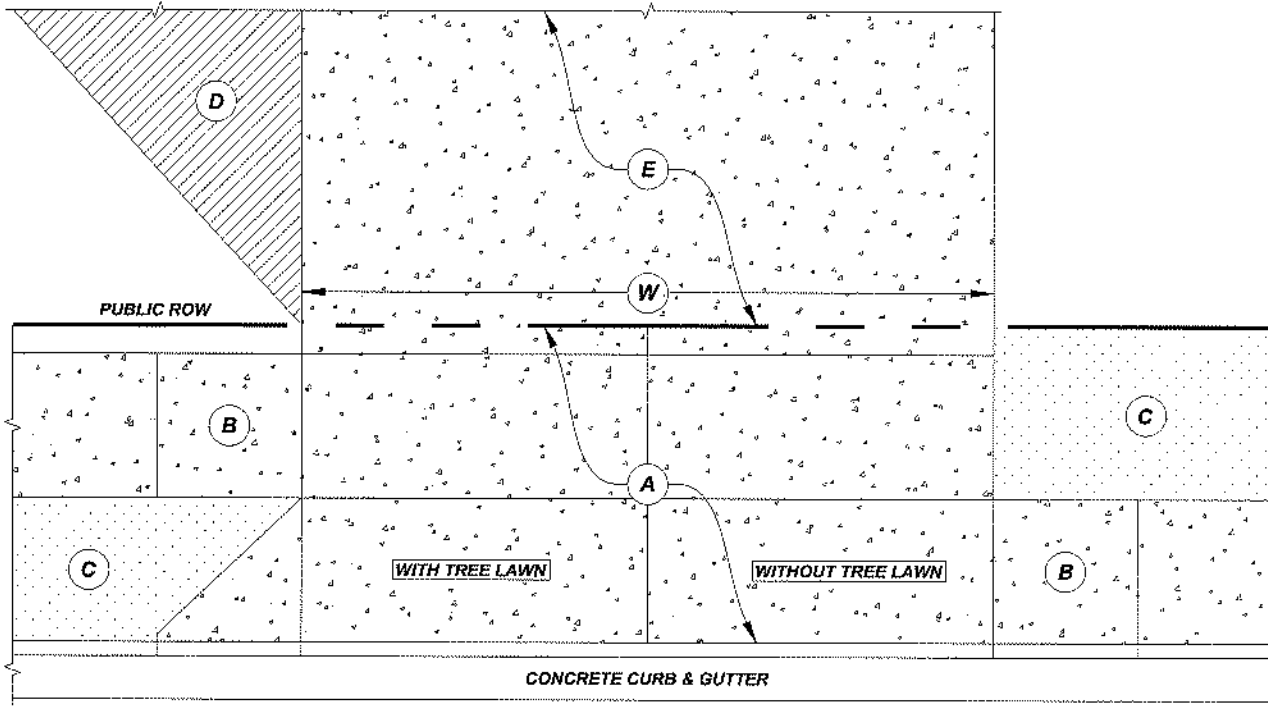
204 East Jefferson, Suite 1 Street, Goshen, Indiana 46528
Phone: 574-534-2201 Fax: 574-533-8625
Web: goshenindiana.org

Date Approved By The City Of Goshen Board Of Public Works & Safety and Approved Revisions

--	--	--	--	--	--

**CITY OF GOSHEN, INDIANA
STANDARD DETAIL**

Drafted By: J. Hoffman	Approved By: D. Sailor, P.E.
Drawing Number: RD-401	



RESIDENTIAL DRIVEWAY LAYOUT

NOT TO SCALE

SINGLE FAMILY AND SINGLE FAMILY CONVERTED TO MULTI-UNIT	
(A)	6" CLASS 'A' CONCRETE, 4,000 PSI (28 DAYS) OVER 4" No. 53 CRUSHED/RECYCLED CONCRETE, COMPACTED
(B)	4" CLASS 'A' CONCRETE, 4,000 PSI (28 DAYS) OVER 4" No. 53 CRUSHED/RECYCLED CONCRETE, COMPACTED
(C)	4" CLEAN TOPSOIL, INDOT TYPE 'U' WITHOUT CLOVER, ACHIEVE 70% COVERAGE. COVER WITH EROSION CONTROL BLANKET
(D)	CONTACT CITY PLANNING & ZONING DEPARTMENT AT (574) 534-8626 FOR APPROVAL TO INCREASE DRIVEWAY WIDTH
(E)	PRIVATE DRIVEWAY SECTION
(W)	12.0' MINIMUM AND 24.0' MAXIMUM WIDTH AT THE RIGHT OF WAY LINE
DUPLEX SINGLE LOT OR COMMON PROPERTY LINE	
(W)	40.0' MAXIMUM

NOTE:

- FOR DRIVE APPROACH WIDTHS GREATER THAN THE 24' AND 40' MAXIMUM, THE PROPERTY OWNER WILL BE REQUIRED TO APPLY FOR A VARIANCE

The City Of Goshen
Department of Public Works & Safety
Office of Engineering

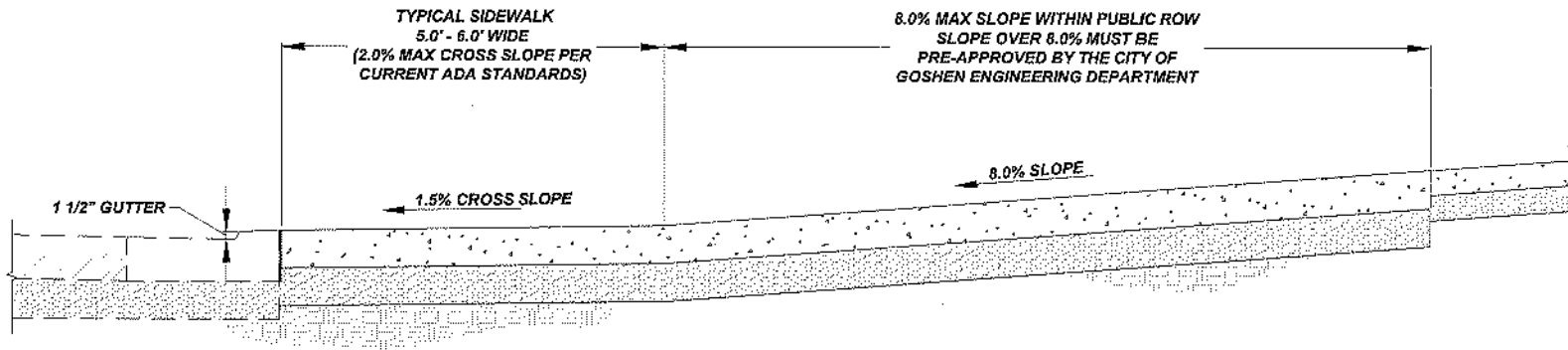
204 East Jefferson, Suite 1 Street, Goshen, Indiana 46528
Phone: 574-534-2201 Fax: 574-533-8626
Web: goshenindiana.org

Date Approved By The City Of Goshen Board Of Public Works & Safety and Approved Revisions

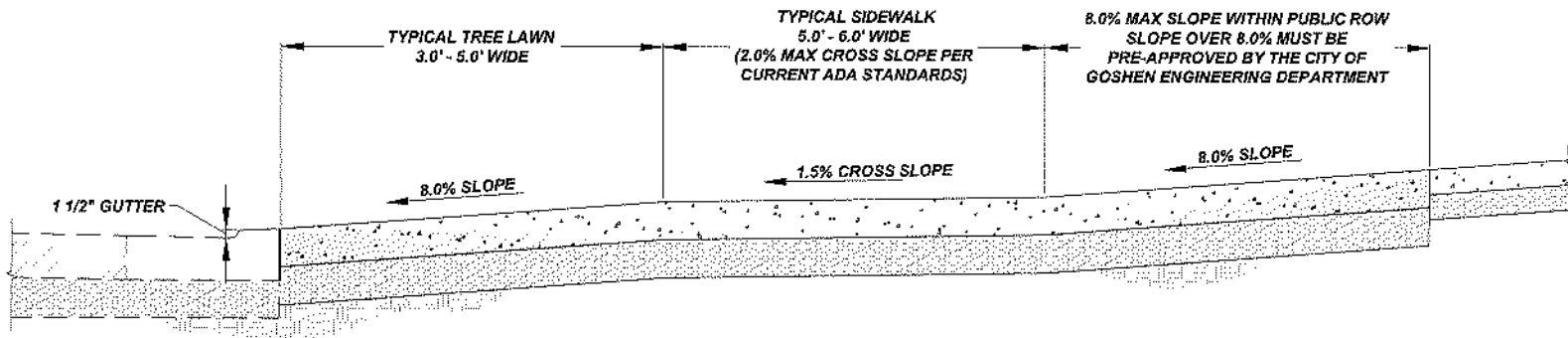
CITY OF GOSHEN, INDIANA
STANDARD DETAIL

Drafted By: J. Hoffman
Approved By: D. Sailor, P.E.

Drawing Number:
RD-402



DRIVE APPROACH WITH SIDEWALK BEHIND CURB



DRIVE APPROACH WITH SIDEWALK AND TREE LAWN

**TYPICAL RESIDENTIAL/COMMERCIAL/INDUSTRIAL DRIVEWAY
APPROACH PROFILE**

NOT TO SCALE

The City of Goshen
Department of Public Works & Safety
Office of Engineering

204 East Jefferson, Suite 1 Street, Goshen, Indiana 46528
Phone: 574-534-2201 Fax: 574-533-8626
Web: goshenindiana.org

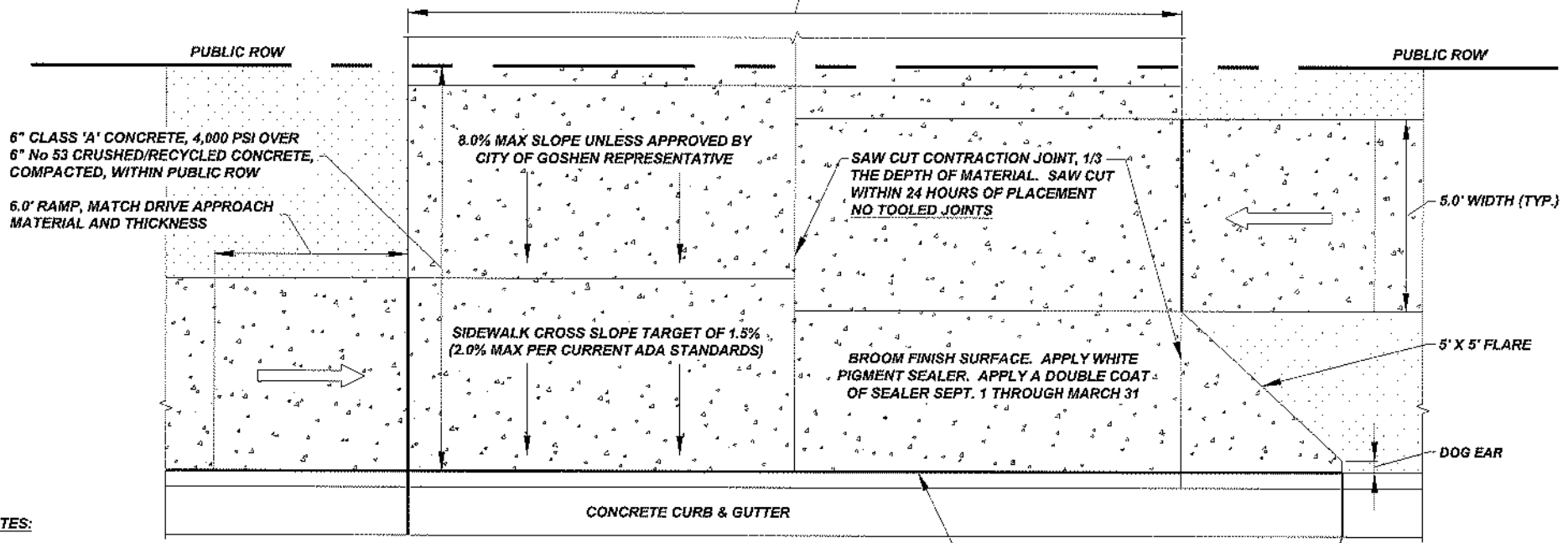
Date Approved By The City Of Goshen Board Of Public Works & Safety and Approved Revisions

--	--	--	--	--	--

**CITY OF GOSHEN, INDIANA
STANDARD DETAIL**

Drafted By: J. Hoffman	Approved By: D. Sailor, P.E.
Drawing Number: RD-403	

SINGLE FAMILY AND SINGLE FAMILY CONVERTED TO MULTI-UNIT: 24' MAX. WIDTH AT PUBLIC ROW
 MULTI-UNIT WITHIN SINGLE LOT: 40' MAX. WIDTH AT PUBLIC ROW
 DUPLEX WITH COMMON PROPERTY LINE: 40' MAX. WIDTH AT PUBLIC ROW



NOTES:

1. A PRE-POUR AND POST-POUR INSPECTION IS REQUIRED FOR ACCEPTANCE OF THE DRIVE APPROACH. CALL THE CITY ENGINEERING DEPARTMENT TO SCHEDULE AN INSPECTION AT (574) 534-2201 OR ONLINE, 48 HOUR NOTICE REQUIRED FOR SCHEDULING
2. DRIVE APPROACH - 6" CLASS 'A' CONCRETE, 4,000 PSI OVER 6" No. 53 CRUSHED/RECYCLED CONCRETE, COMPACTED
3. SIDEWALK - 4" CLASS 'A' CONCRETE, 4,000 PSI OVER 4" No. 53 CRUSHED/RECYCLED CONCRETE, COMPACTED
4. APPLY WHITE PIGMENT SEALER. APPLY A DOUBLE COAT OF SEALER BEGINNING SEPT. 1 THROUGH MARCH 31
5. RESTORE YARD AREAS WITH 4" OF CLEAN TOPSOIL, INDOT TYPE 'U' WITHOUT CLOVER, COVER WITH EROSION CONTROL BLANKET. LEAVE TOP SOIL SLIGHTLY LOWER THAN SIDEWALK AND DRIVE APPROACH FOR DRAINAGE. THE CONTRACTOR IS RESPONSIBLE TO ACHIEVE 70% EVEN COVERAGE
6. NO REINFORCEMENT IS REQUIRED BUT MAY BE PLACED. CURB AND DRIVE APPROACH MUST REMAIN SEPARATE TO ALLOW FOR MOVEMENT
7. THE SUB-GRADE/SUB-BASE CAN NOT BE FROZEN OR WET WHEN THE CONCRETE IS PLACED. IF THE TEMPERATURES WILL CAUSE FROST IN THE GROUND, BLANKETS NEED TO BE PLACED OVER THE SUB-BASE TO PREVENT FREEZING
8. IF THE FINAL FINISH HAS CROSS SLOPES OVER 2.0% WITHIN THE SIDEWALKS, THOSE AREAS MUST BE REMOVED AND RE-POURED. INCLUDING THE SIDEWALK THROUGH THE DRIVE APPROACH. CROSS SLOPES ARE CHECKED WITH A 2' DIGITAL LEVEL
9. EXISTING CURB MAY NOT BE HORIZONTALLY SAW CUT TO DEPRESS THE CURB. THE CURB MUST BE REMOVED AND RE-POURED WITH NEW PROFILE

1/2" FIBER BOARD OR FOAM EXPANSION MATERIAL, FULL DEPTH. INSTALL BETWEEN CURB AND SIDEWALK. TOP OF EXPANSION MATERIAL SHALL BE EVEN WITH TOP OF CURB AND SIDEWALK

1/2" FIBER BOARD OR FOAM EXPANSION MATERIAL, FULL DEPTH AND WIDTH, SINGLE PIECE

RESIDENTIAL DRIVEWAY APPROACH

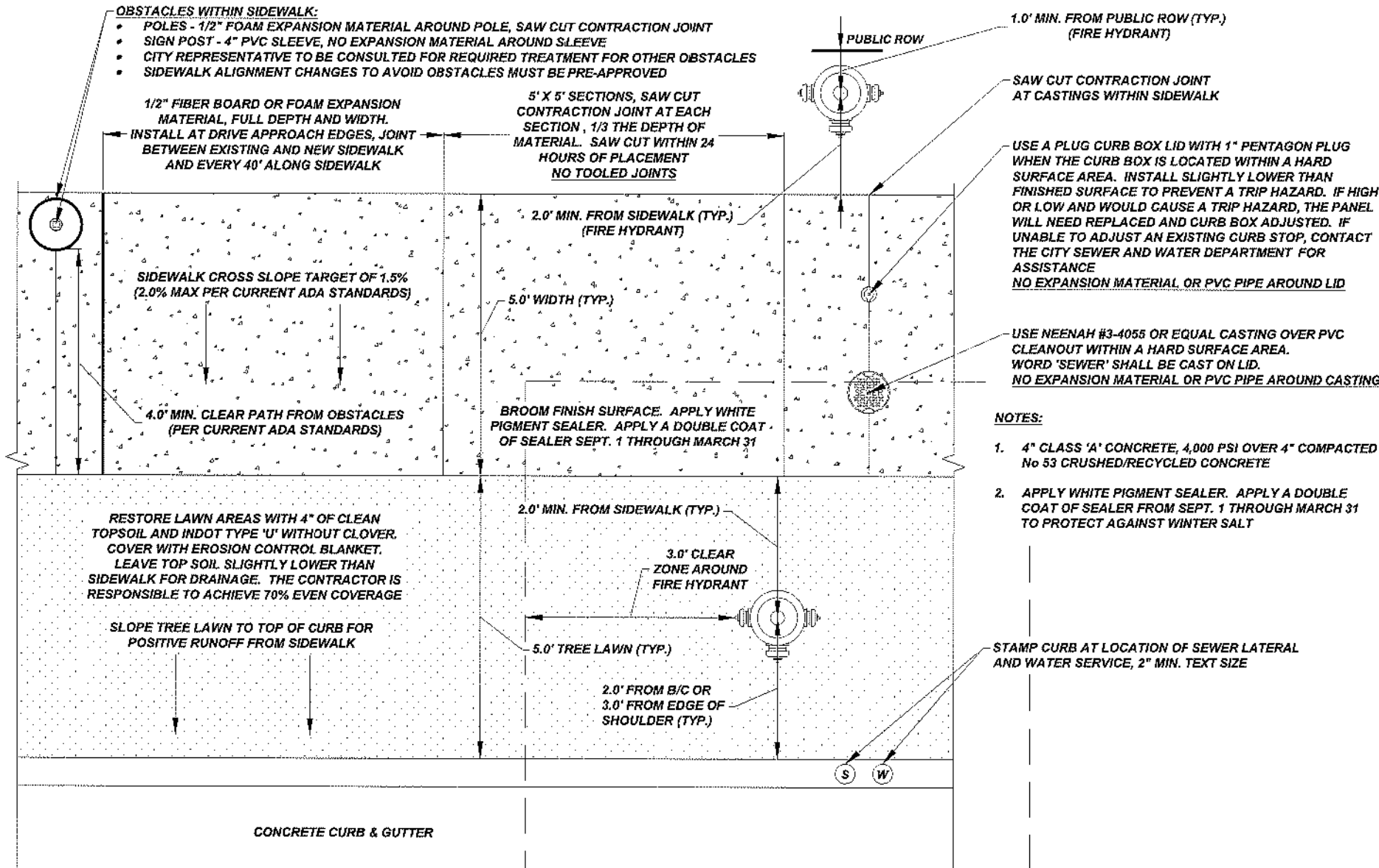
NOT TO SCALE

Date Approved By The City Of Goshen Board Of Public Works & Safety and Approved Revisions				

**CITY OF GOSHEN, INDIANA
 STANDARD DETAIL**

Drafted By: J. Hoffman	Approved By: D. Sallor, P.E.
Drawing Number: RD-404	

The City Of Goshen
 Department of Public Works & Safety
 Office of Engineering
 204 East Jefferson, Suite 1 Street, Goshen, Indiana 46528
 Phone: 574-534-2201 Fax: 574-533-8626
 Web: goshenindiana.org



SIDEWALK WITH TREE LAWN

NOT TO SCALE

The City Of Goshen
Department of Public Works & Safety
Office of Engineering

204 East Jefferson, Suite 1 Street, Goshen, Indiana 46526
Phone: 574-534-2201 Fax: 574-533-8626
Web: goshenindiana.org

Date Approved By The City Of Goshen Board Of Public Works & Safety and Approved Revisions

CITY OF GOSHEN, INDIANA
STANDARD DETAIL

Drafted By: J. Hoffman
Approved By: D. Sailor, P.E.
Drawing Number: RD-405

OBSTACLES WITHIN SIDEWALK:

- POLES - 1/2" FOAM EXPANSION MATERIAL AROUND POLE, SAW CUT CONTRACTION JOINT
- SIGN POST - 4" PVC SLEEVE, NO EXPANSION MATERIAL AROUND SLEEVE
- CITY REPRESENTATIVE TO BE CONSULTED FOR REQUIRED TREATMENT FOR OTHER OBSTACLES
- SIDEWALK ALIGNMENT CHANGES TO AVOID OBSTACLES MUST BE PRE-APPROVED

2.0' MIN. FROM SIDEWALK
(FIRE HYDRANT)

1/2" FIBER BOARD OR FOAM EXPANSION MATERIAL, FULL DEPTH AND WIDTH. INSTALL AT DRIVE APPROACH EDGES, JOINT BETWEEN EXISTING AND NEW SIDEWALK AND EVERY 40' ALONG SIDEWALK

6' X 6' SECTIONS, SAW CUT CONTRACTION JOINT AT EACH SECTION, 1/3 THE DEPTH OF MATERIAL. SAW CUT WITHIN 24 HOURS OF PLACEMENT
NO TOOLED JOINTS

SAW CUT CONTRACTION JOINT AT CASTINGS WITHIN SIDEWALK

USE A PLUG CURB BOX LID WITH 1" PENTAGON PLUG WHEN THE CURB BOX IS LOCATED WITHIN A HARD SURFACE AREA. INSTALL SLIGHTLY LOWER THAN FINISHED SURFACE TO PREVENT A TRIP HAZARD. IF HIGH OR LOW AND WOULD CAUSE A TRIP HAZARD, THE PANEL WILL NEED REPLACED AND CURB BOX ADJUSTED. IF UNABLE TO ADJUST AN EXISTING CURB STOP, CONTACT THE CITY SEWER AND WATER DEPARTMENT FOR ASSISTANCE
NO EXPANSION MATERIAL OR PVC PIPE AROUND LID

SIDEWALK CROSS SLOPE TARGET OF 1.5% (2.0% MAX PER CURRENT ADA STANDARDS)

6.0' WIDTH (TYP.)

USE NEENAH #3-4055 OR EQUAL CASTING OVER PVC CLEANOUT WITHIN A HARD SURFACE AREA. WORD 'SEWER' STAMPED ON LID.
NO EXPANSION MATERIAL OR PVC PIPE AROUND CASTING

4.0' MIN. CLEAR PATH FROM OBSTACLES (PER CURRENT ADA STANDARDS)

BROOM FINISH SURFACE. APPLY WHITE PIGMENT SEALER. APPLY A DOUBLE COAT OF SEALER SEPT. 1 THROUGH MARCH 31

NOTES:

1. 4" CLASS 'A' CONCRETE, 4,000 PSI OVER 4" COMPACTED No 53 CRUSHED/RECYCLED CONCRETE
2. RESTORE YARD AREAS WITH 4" OF CLEAN TOPSOIL, INDOT TYPE 'U' WITHOUT CLOVER, COVER WITH EROSION CONTROL BLANKET. LEAVE TOP SOIL SLIGHTLY LOWER THAN SIDEWALK AND DRIVE APPROACH FOR DRAINAGE. THE CONTRACTOR IS RESPONSIBLE TO ACHIEVE 70% EVEN COVERAGE
3. APPLY WHITE PIGMENT SEALER. APPLY A DOUBLE COAT OF SEALER FROM SEPT. 1 THROUGH MARCH 31 TO PROTECT AGAINST WINTER SALT
4. DEFECTS OR QUALITY ISSUES MAY REQUIRE SECTIONS OF THE SIDEWALK TO BE REMOVED AND RE-POURED. THE CITY REPRESENTATIVE SHALL DETERMINE IF SECTIONS OF THE SIDEWALK WILL NEED RE-POURED
5. A PRE-POUR AND POST-POUR INSPECTION IS REQUIRED FOR ACCEPTANCE OF THE SIDEWALK. CALL THE CITY ENGINEERING DEPARTMENT TO SCHEDULE AN INSPECTION AT (574) 534-2201 OR ONLINE, 48 HOUR NOTICE REQUIRED FOR SCHEDULING
6. IF UNABLE TO ADJUST WATER SERVICE OR VALVE BOX CONTACT THE CITY WATER & SEWER

CONCRETE CURB

MATCH JOINT LOCATION BETWEEN CURB AND SIDEWALK WHEN POSSIBLE

1/2" FIBER BOARD OR FOAM EXPANSION MATERIAL, FULL DEPTH. INSTALL BETWEEN CURB AND SIDEWALK. TOP OF EXPANSION MATERIAL SHALL BE EVEN WITH TOP OF CURB AND SIDEWALK

STAMP CURB AT LOCATION OF SEWER LATERAL AND WATER SERVICE, 2" MIN. TEXT SIZE

SIDEWALK ADJACENT TO CONCRETE CURB

NOT TO SCALE

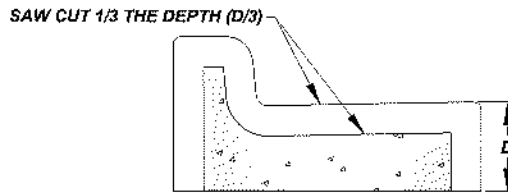
The City Of Goshen
Department of Public Works & Safety
Office of Engineering

204 East Jefferson, Suite 1 Street, Goshen, Indiana 46528
Phone: 574-534-2201 Fax: 574-533-8628
Web: goshenindiana.org

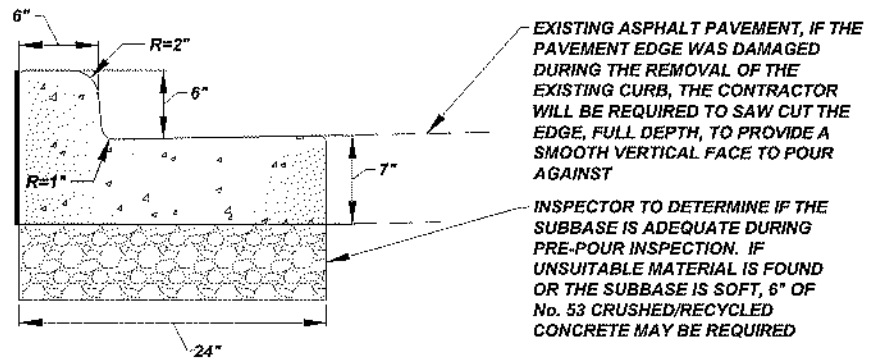
Date Approved By The City Of Goshen Board Of Public Works & Safety and Approved Revisions

CITY OF GOSHEN, INDIANA
STANDARD DETAIL

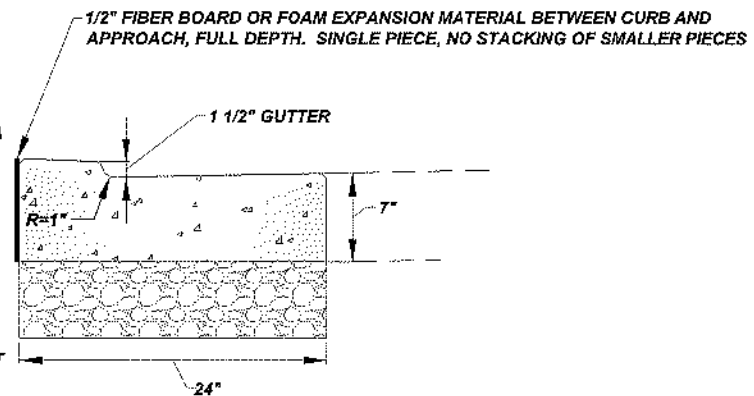
Drafted By: J. Hoffman	Approved By: D. Saffor, P.E.
Drawing Number: RD-406	



CONTRACTION JOINT X-SECTION



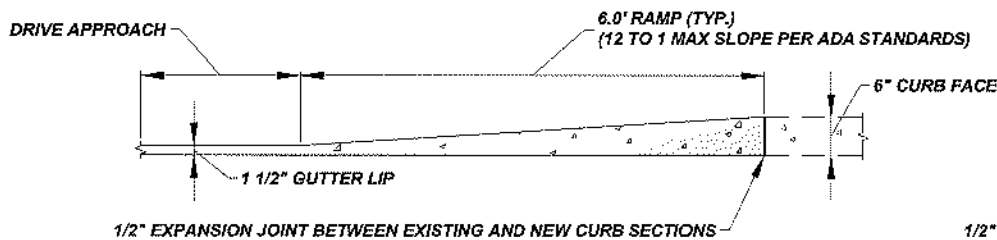
CONCRETE CURB & GUTTER



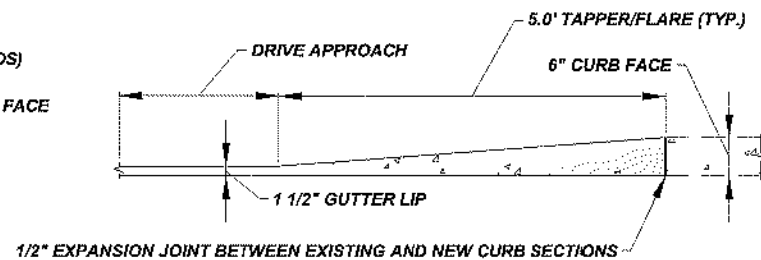
CONCRETE CURB & GUTTER AT DRIVE APPROACH

NOTES:

1. CLASS 'A' CONCRETE, 4,000 PSI
2. EXPANSION JOINT LOCATIONS:
 STRAIGHT CURB SECTION - EVERY 40'
 ROADWAY CURVE - BEGINNING POINT, MID POINT, END POINT AND EVERY 40' ALONG CURVE
 INTERSECTION RADIUS - BEGINNING POINT, MID POINT, END POINT WITHOUT ADA RAMP OR SIDEWALK
 EACH SIDE OF RAMP
 CURB CASTING - 4' FROM EACH SIDE OF THE CASTING
 EXPANSION MATERIAL MUST BE FULL DEPTH AND WIDTH OF CURB SECTION OR WILL REQUIRE REPLACED
3. CONTRACTION JOINT LOCATIONS:
 REQUIRED EVERY 10' AT 1/3 THE DEPTH, D/3, ALONG STRAIGHT CURB SECTIONS, ROADWAY CURVES
 AND INTERSECTION RADI
 SAW CUT CONTRACTION JOINTS WITHIN 24 HOURS OF PLACEMENT
 NO TOOLING OF CONTRACTIONS JOINTS IS ALLOWED
4. REMOVE ALL EXCESS MATERIAL ALONG THE FACE OF THE CURB PRIOR TO MATERIAL SETTING TO ALLOW A
 CLEAN VERTICAL FACE TO PAVE OR POUR AGAINST. REMOVE EXCESS MATERIAL ALONG BACKSIDE OF
 CURB, AT DRIVE APPROACHES AND SIDEWALKS, TO ALLOW A CLEAN VERTICAL FACE FOR EXPANSION/
 MATERIAL BETWEEN CONCRETE POURS
6. THE SUB-BASE/SUB-GRADE CAN NOT BE FROZEN OR WET WHEN THE CONCRETE IS PLACED. IF THE
 TEMPERATURES WILL CAUSE FROST IN THE GROUND, BLANKETS NEED TO BE PLACED OVER THE
 SUB-BASE/SUB-GRADE TO PREVENT FREEZING PRIOR TO PLACING THE CONCRETE
4. BROOM FINISH THE CONCRETE
 APPLY WHITE PIGMENT SEALER
 APPLY A DOUBLE COAT OF SEALER FROM SEPT. 1 THROUGH MARCH 31 TO PROTECT AGAINST WINTER SALT
5. RESTORE YARD AREAS WITH 4" OF CLEAN TOPSOIL, INDOT TYPE 'U' WITHOUT CLOVER, COVER WITH
 EROSION CONTROL BLANKET. THE CONTRACTOR IS RESPONSIBLE TO ACHIEVE 70% EVEN COVERAGE



CONCRETE CURB & GUTTER TAPER PROFILE AT DRIVE APPROACH WITH SIDEWALK AND NO TREE LAWN



CONCRETE CURB & GUTTER TAPER PROFILE AT DRIVE APPROACH WITH SIDEWALK AND TREE LAWN

CONCRETE CURB & GUTTER AT DRIVEWAY APPROACH

NOT TO SCALE

Date Approved By The City Of Goshen Board Of Public Works & Safety and Approved Revisions

--	--	--	--	--

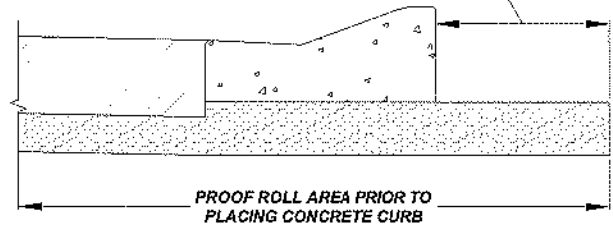
**CITY OF GOSHEN, INDIANA
STANDARD DETAIL**

Drafted By: J. Hoffman
 Approved By: D. Sailor, P.E.
 Drawing Number: RD-407

The City Of Goshen
 Department of Public Works & Safety
 Office of Engineering

204 East Jefferson, Suite 1 Street, Goshen, Indiana 46528
 Phone: 574-534-2201 Fax: 574-533-8626
 Web: goshenindiana.org

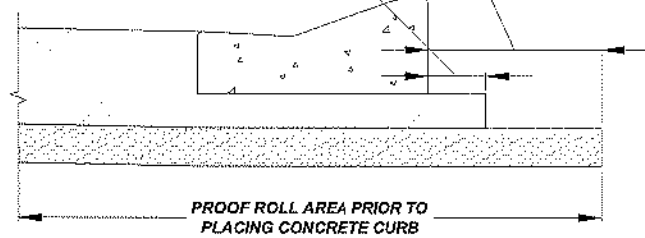
MIN. 18" - No. 53 COMPACTED
CRUSHED/RECYCLED CONCRETE
OVER COMPACT SUB-GRADE



CONCRETE CURB INSTALLATION ON No. 53 BASE

MIN. 18" - No. 53 COMPACTED
CRUSHED/RECYCLED CONCRETE
OVER COMPACT SUB-GRADE

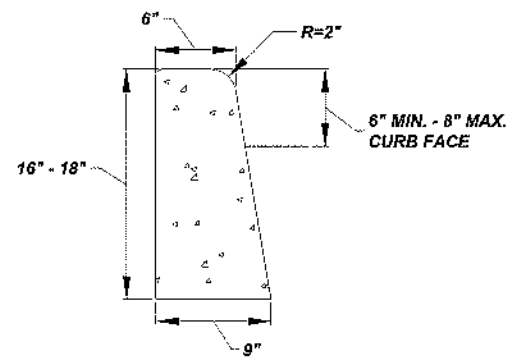
6", PLACE CURB ON HMA BASE IF THE
ROAD SECTION EXTENDS 3" OR MORE
BEYOND THE BOTTOM OF THE CURB



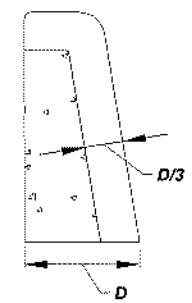
CONCRETE CURB INSTALLATION ON HMA BASE

STANDARD CONCRETE CURB

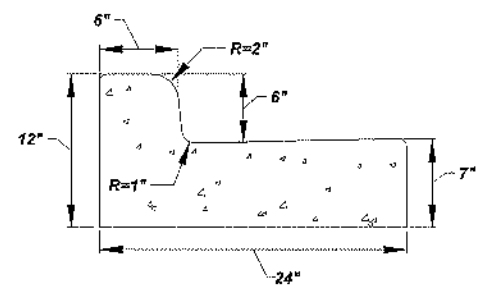
NOT TO SCALE



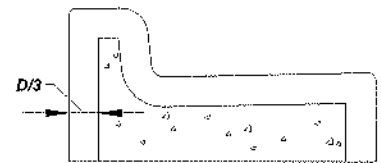
CONCRETE BARRIER CURB



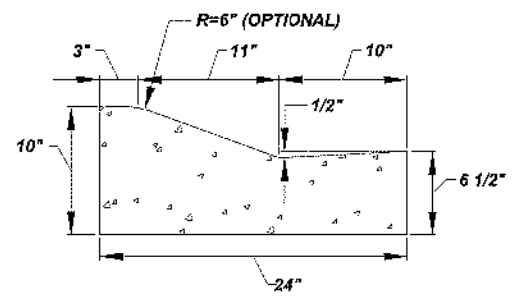
CONTRACTION JOINT SECTION



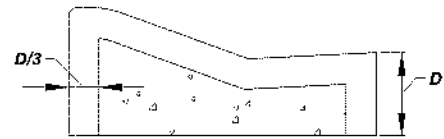
CONCRETE CURB & GUTTER



CONTRACTION JOINT SECTION



CONCRETE CURB & GUTTER



CONTRACTION JOINT SECTION

The City Of Goshen
Department of Public Works & Safety
Office of Engineering
204 East Jefferson, Suite 1 Street, Goshen, Indiana 46528
Phone: 574-534-2201 Fax: 574-533-6626
Web: goshenIndiana.org

Date Approved By The City Of Goshen Board Of Public Works & Safety and Approved Revisions				

CITY OF GOSHEN, INDIANA
STANDARD DETAIL

Drafted By: J. Hoffman
Approved By: D. Saltor, P.E.
Drawing Number: **RD-408**

NOTES:

1. CLASS 'A' CONCRETE, 4,000 PSI
2. EXPANSION JOINT LOCATIONS:
STRAIGHT CURB SECTION - EVERY 40'
ROADWAY CURVE - BEGINNING POINT, MID POINT, END POINT AND EVERY 40' ALONG CURVE
INTERSECTION RADIUS - BEGINNING POINT, MID POINT, END POINT WITHOUT ADA RAMP OR SIDEWALK. EACH SIDE OF RAMP

CURB CASTING - 4' FROM EACH SIDE OF THE CASTING
EXPANSION MATERIAL MUST BE FULL DEPTH AND WIDTH OF CURB SECTION OR REPLACEMENT WILL BE REQUIRED
3. CONTRACTION JOINT LOCATIONS:
REQUIRED EVERY 10' AT 1/3 THE DEPTH, D/3, 1/8" MIN. TO 1/4" MAX. WIDTH, ALONG STRAIGHT CURB SECTIONS, ROADWAY
CURVES AND INTERSECTION RADII
SAW CUT CONTRACTION JOINTS WITHIN 24 HOURS OF PLACEMENT
NO TOOLING OF CONTRACTIONS JOINTS IS ALLOWED
4. REMOVE ALL EXCESS MATERIAL ALONG THE FACE OF THE CURB PRIOR TO MATERIAL SETTING TO ALLOW A CLEAN VERTICAL
FACE TO BUILD AGAINST. REMOVE EXCESS MATERIAL ALONG BACKSIDE OF CURB, AT DRIVE APPROACHES AND SIDEWALKS,
TO ALLOW A CLEAN VERTICAL FACE FOR EXPANSION MATERIAL AND MATERIAL TRANSITIONS
6. THE SUB-BASE/SUB-GRADE CANNOT BE FROZEN OR WET WHEN THE CONCRETE IS PLACED. IF THE TEMPERATURES WILL
CAUSE FROST IN THE GROUND, BLANKETS NEED TO BE PLACED OVER THE SUB-BASE/SUB-GRADE TO PREVENT FREEZING
PRIOR TO PLACING THE CONCRETE
4. BROOM FINISH REQUIRED
APPLY WHITE PIGMENT SEALER
APPLY A DOUBLE COAT OF SEALER FROM SEPT. 1 THROUGH MARCH 31 TO PROTECT AGAINST WINTER SALT
5. RESTORE YARD AREAS WITH 4" OF CLEAN TOPSOIL, BLUEGRASS, RYE AND FESCUE YARD SEED MIX, COVER WITH EROSION
CONTROL BLANKET. THE CONTRACTOR IS RESPONSIBLE TO ACHIEVE 70% EVEN COVERAGE

The City Of Goshen
Department of Public Works & Safety
Office of Engineering

204 East Jefferson, Suite 1 Street, Goshen, Indiana 46526
Phone: 574-534-2201 Fax: 574-533-8626
Web: goshenindiana.org

Date Approved By The City Of Goshen Board Of Public Works & Safety and Approved Revisions

CITY OF GOSHEN, INDIANA
STANDARD DETAIL

Drafted By: J. Hoffman
Approved By: D. Sallor, P.E.
Drawing Number: RD-408