

# A Drop of News

January 2023

## The Maple City Stormwater Toolbox

### What is an MS4 and Why Does it Matter?



**Happy New Year from the Goshen Stormwater Department** and welcome to all the new City employees. Let's begin 2023 with a stormwater refresher by explaining why the City of Goshen is considered a Municipal Separate Storm Sewer System, or MS4. An MS4 is defined as a conveyance or system of conveyances that is: 1. owned by a state, city, town, village, or other



*Sediment Pollution in Rock Run Creek*

public entity that discharges to waters of the U.S., and 2. designed or used to collect or convey stormwater (e.g., storm drains, curbs and gutters, pipes, and ditches). The term MS4 does not solely refer to municipally-owned storm sewer systems but rather is a term with a much broader application that can include state departments of transportation, universities, local sewer districts, hospitals, military bases, and prisons. The identification of communities as MS4s is to help reduce water pollution in our nation's waterways through the National Pollutant Discharge Elimination System program, which is part of the Clean Water Act. The Clean Water Act helped reduce the impact of point-source pollution, but non-point source pollution,

like stormwater runoff, continued to grow. Thus, action was taken to minimize the impact of stormwater pollution by designating urban areas into two categories: Phase I and Phase II MS4s. Phase I MS4 communities were identified in 1990 as having a population of 100,000 or more which only Indianapolis met this threshold. In 1999, communities with a population density threshold between 10,000 and 100,000 were identified as Phase II. There are currently 183 Phase II MS4 communities in Indiana. The MS4 communities identified throughout the nation by 2009, are highlighted in the map to the right. Due to a language change to no longer identify "urbanized areas" by the Census Bureau, the data was not updated with the 2020 Census. Revisions were finalized in March of 2022 by the Census Bureau so the EPA can now move forward with revisions before updates will be made.

#### National Map of Regulated MS4s



*National Map of Regulated MS4s—credit :US EPA NPDES*



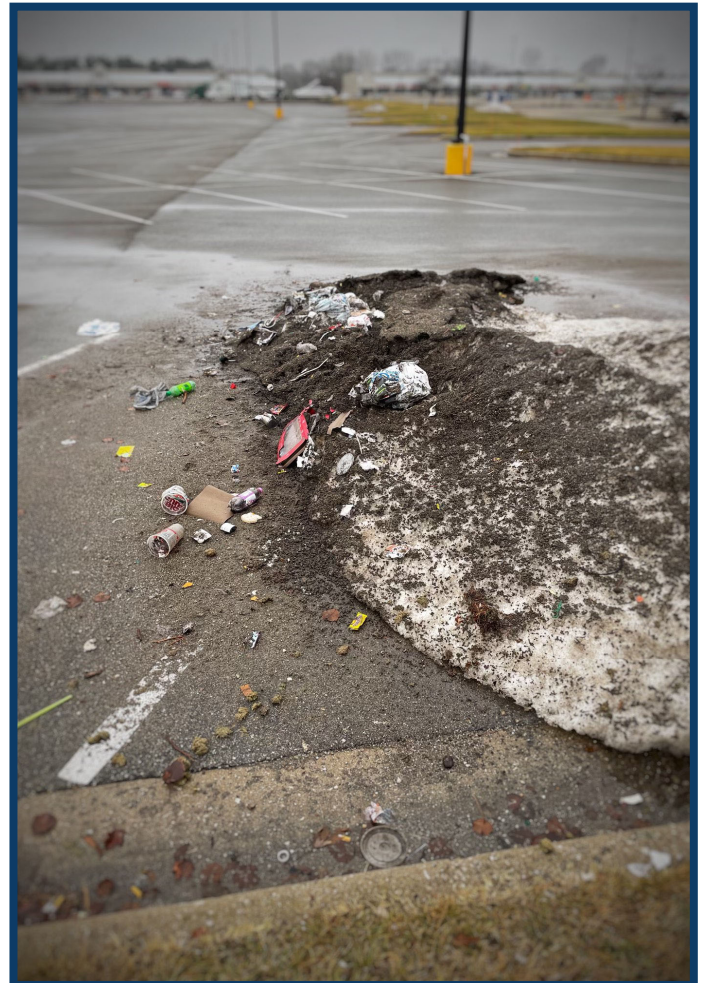


## Did You Know?

### Snow is Stormwater Waiting to Happen

On average, every 13 inches of snow equals one inch of rain. This snowfall eventually melts and enters Goshen waterways the same as rainfall does, taking pollution along with it. Have you ever noticed the fresh white snow starting to turn dark on the side of the road? That's a clear indication that the snow has picked up pollution. Capturing this pollution before it enters our roadway is a primary goal for the Goshen Stormwater Department.

- Trash, oil, and other debris can be seen in a snow pile in a parking lot. Snowplows have pushed all of the pollution in a parking lot to a specific location where the snow is mounded. (right)
- In the week of December 19, 2022, a snow storm entered Goshen and brought quite a bit of wind with it. This wind stirred up sediment and carried it in the air, spreading it throughout Goshen. You may have noticed snow that was dark in color that was nowhere near the roadway. (below)



#### Report a Pollutant

Stormwater pollutants include anything other than rain that could flow or be washed into a storm drain. If you see a pollutant entering a storm drain, please call 574-534-2201, send an email to [stormwater@goshencity.com](mailto:stormwater@goshencity.com), or submit a Stormwater Report through the City's "Report an Issue" button on the City of Goshen website, [www.goshenindiana.org](http://www.goshenindiana.org).

Public Works & Utilities  
Department of Stormwater  
204 E. Jefferson Street  
Goshen, Indiana 46528  
574-534-2201  
[bit.ly/goshen-stormwater](http://bit.ly/goshen-stormwater)

Director of Public Works:  
Dustin Sailor

Stormwater Coordinator:  
Jason Kauffman 537-3832

Stormwater Specialist  
Boston Snyder 533-8733

