



City of Goshen

STORMWATER TOOLBOX

Public Works & Utilities
Department of Stormwater
204 E. Jefferson Street
Goshen, Indiana 46528
574-534-2201
bit.ly/goshen-stormwater

Director of Public Works:
Dustin Sailor
Stormwater Coordinator:
Jason Kauffman— 537-3832

Snow is Stormwater Too

The next time it snows, keep an eye on the color of the snow along the sides of the road. It most likely will turn grayish or brownish in color due to the sand, salt, oil, trash, and other pollutants collecting in it. Then, as that snow melts, it washes those pollutants to the nearest storm drain or waterway causing a water quality issue.

Therefore, it is important to take steps to prevent stormwater pollutants from coming into contact with the snow. Here are a few tips to consider:

- * Pile snow where it will have the most opportunity to soak into the ground.
- * Make sure the nearest storm drains are clear and do not pile snow on them.



- * Shovel early and shovel often! The more snow and ice you remove, the less salt you will have to use.
- * Consider using an ice scraper or flat metal shovel to remove stubborn snow and ice.
- * A single piece of salt or ice melt can go a long way in melting ice and if the salt is crunching underfoot, too much has been put down.
- * Sweep up excess salt or sand from the dry pavement after it is no longer being put to use.

The above information was partially provided by the National Stormwater Center (www.npdes.com).

Winter Deicing

Did You Know...most deicing chemicals, such as salt, end up in our soil or in our local creeks? Melting snow flows into the City's stormwater system and picks up salt as it travels over surfaces like roads, sidewalks, and driveways. You can learn more about the impacts of salt on our communities and the environment and what we can do to reduce those salt levels by visiting maps.aqua.wisc.edu/salt/ created by the University of Wisconsin Sea Grant Institute.



Excess ice melt has turned the snow blue. This is one sign of over application. Remember, One cup of road salt is enough to cover 10 sidewalk squares, or a 20-foot driveway.

A DROP OF NEWS

Your Stormwater Newsletter

Preventing Stormwater Pollution Starts with You

In 2019, there were **11 illicit discharges** identified in the City of Goshen. What is an Illicit Discharge? An illicit discharge is anything other than the rain that could flow or be washed into a storm drain. Things to look for are:

- ❖ Oil sheens on the surface of water
- ❖ Concrete washout/white residue on the ground
- ❖ Grease marks/stains around catch basins
- ❖ Discolored water in waterways
- ❖ Unknown materials on the pavement or soil
- ❖ Dirt/sediment being tracked or washed onto the road
- ❖ People pouring or washing liquids down storm drains
- ❖ Any other situation where you think a potential pollutant could come into contact with stormwater

If you see any of the above make sure you report it:

Call: 574-537-3832 or 574-534-2201

Email: jasonkauffman@goshencity.com

Click: Report an Issue Button at the top of the City Website or www.goshenindiana.org/report-an-issue

Questions or Comments

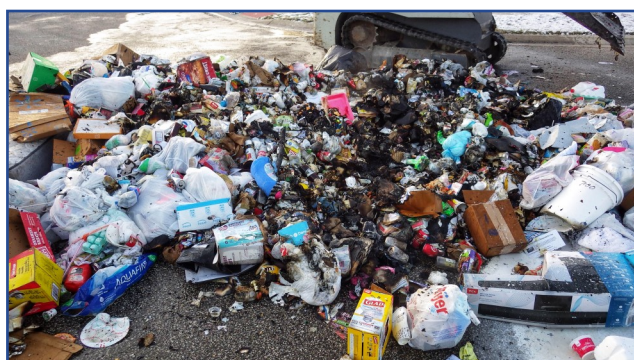
If you have any questions or comments about stormwater, pollution prevention and good housekeeping, or something you would like to see in the Stormwater Toolbox Newsletter please contact Jason Kauffman. We all learn together and your thoughts, questions, and comments are appreciated.



Concrete slurry from the cutting of new concrete was pushed into a storm drain that flows to the Elkhart River.



Used cooking grease was disposed of improperly and ended up running down the street and into a storm drain that discharged to the Elkhart River.



Trash had to be dumped on a residential street due to a fire starting in a garbage truck. Make sure to dispose of trash and household hazardous wastes appropriately.