

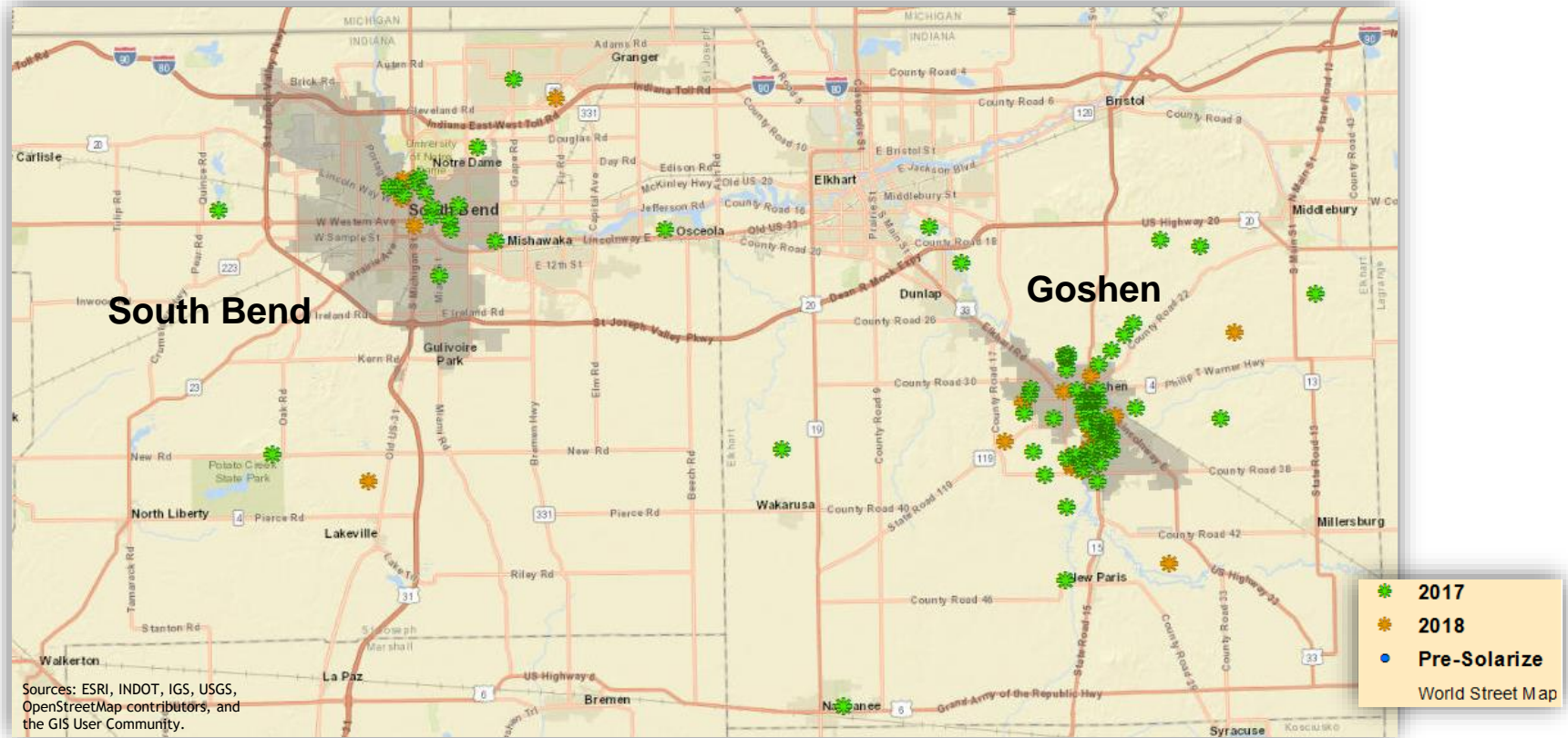
January 2018 Update: 2017 Results



SOLARIZE

*Northern Indiana
(Goshen and South Bend)*

Solarize Northern Indiana: 97 Projects



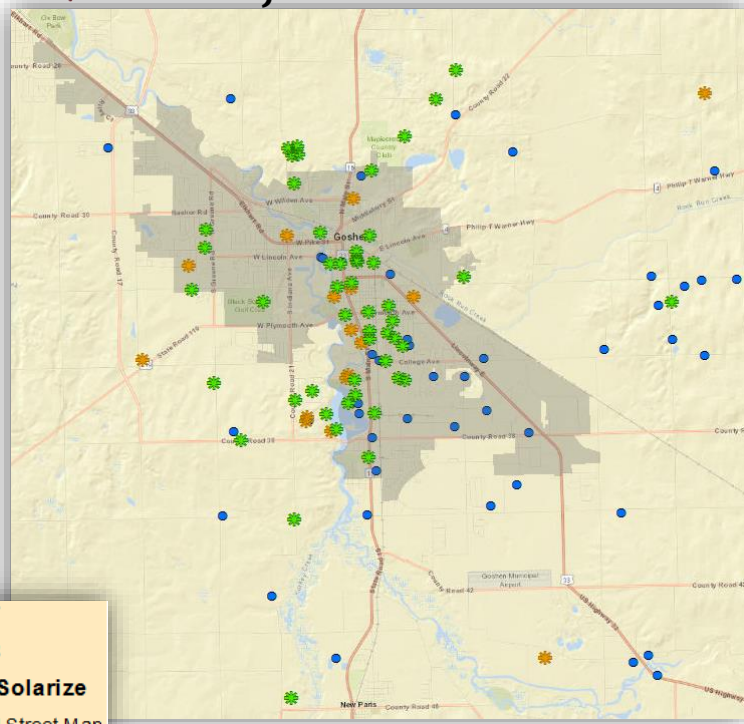
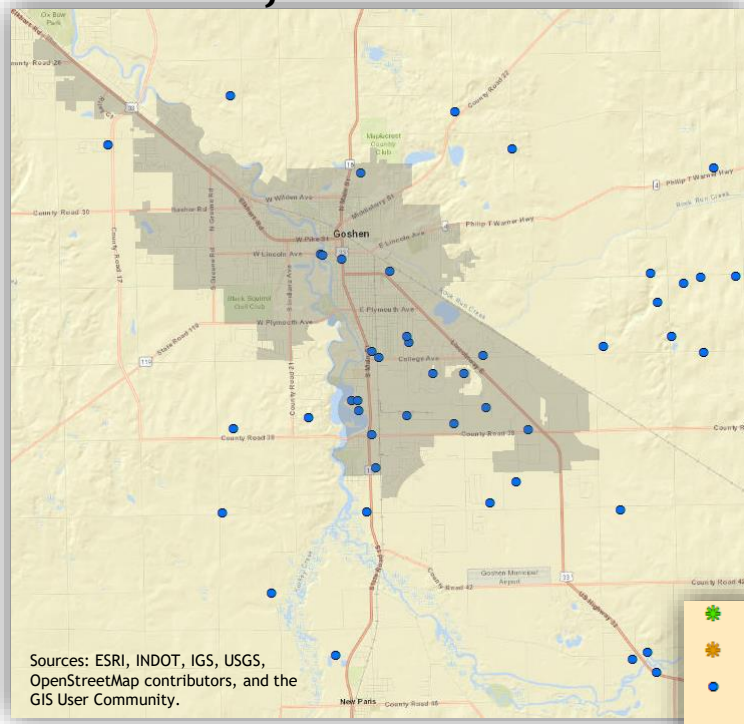
Pre-Solarize data provided by homeowners and installers, compiled through the SolSmart program, and made publicly accessible by SIREN at www.sirensolar.org
Not Pictured: 1 in LaPorte County



Goshen

Before Solarize

After Solarize



Sources: ESRI, INDOT, IGS, USGS, OpenStreetMap contributors, and the GIS User Community.

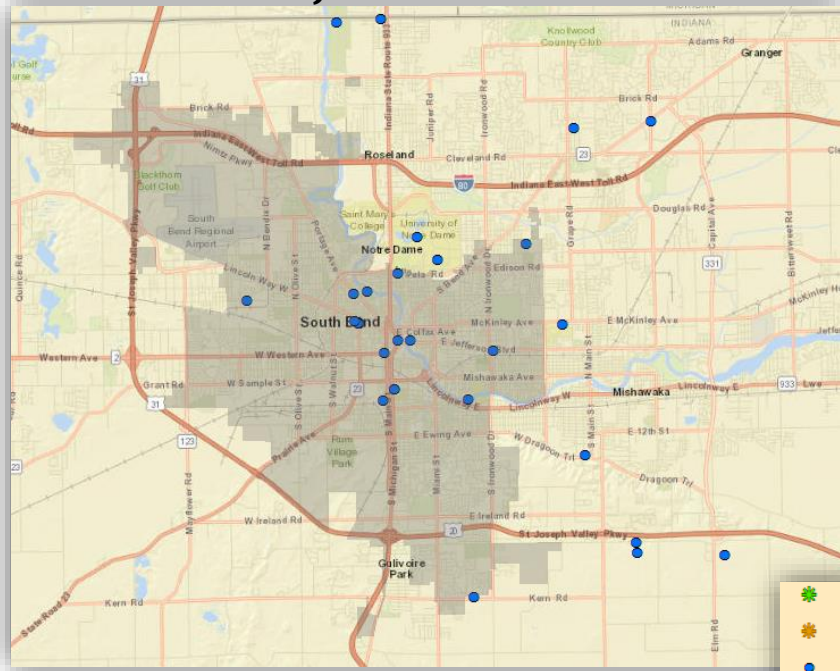
-  2017
-  2018
-  Pre-Solarize

World Street Map

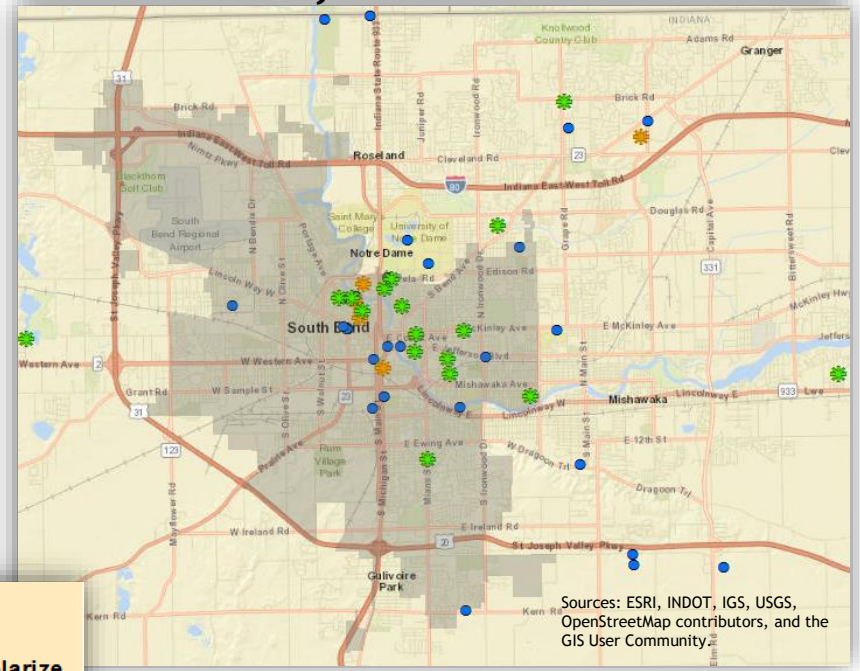
SOLARIZE

South Bend

Before Solarize



After Solarize



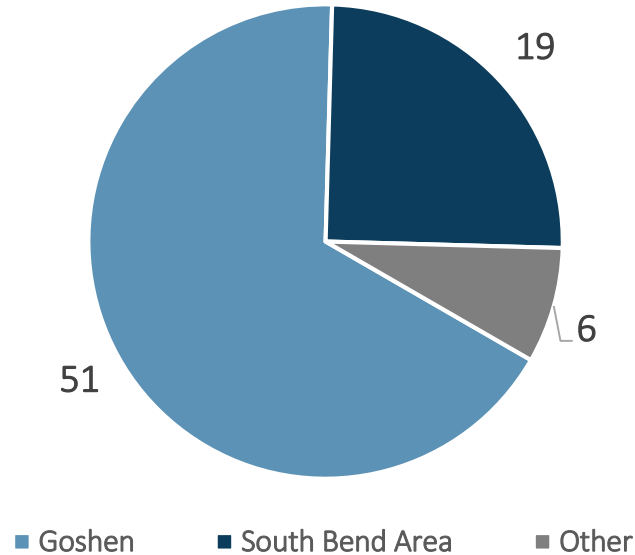
- ★ 2017
- ★ 2018
- Pre-Solarize

World Street Map

Sources: ESRI, INDOT, IGS, USGS, OpenStreetMap contributors, and the GIS User Community

Solarize By the Numbers: 76 Projects in 2017

Number of Installed Projects, by Location



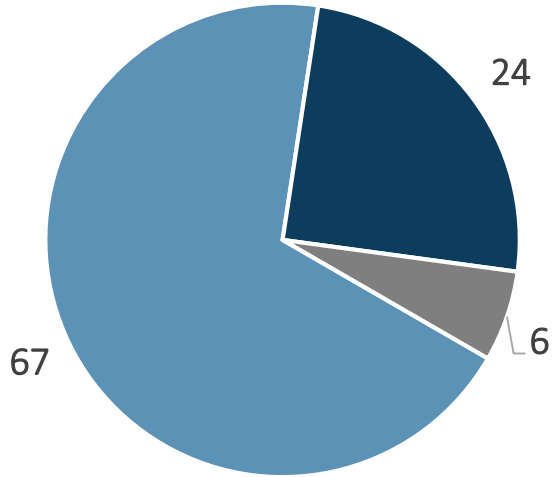
Location	Total Capacity
Goshen Area	344.2 kW
South Bend Area	135 kW
Other: Osceola, Middlebury, New Paris, etc.	55.4 kW
Total	534.6 kW

*Based on Goshen and South Bend address (Goshen city limits = 33; South Bend city limits = 13)

Context: Average Home: 6 – 9 kW required
South Bend Century Center: 23 kW; Goshen WWTP: 316 kW

Solarize By the Numbers: 97 Projects (76 Installed in 2017)

Number of Installed Projects, by Location



■ Goshen Area* ■ South Bend Area* ■ Other

Location	Total Capacity
Goshen Area	485.8 kW
South Bend Area	164.6 kW
Other: Osceola, Middlebury, New Paris, etc.	55.4
Total	705.8 kW

*Based on Goshen and South Bend addresses (Goshen city limits = 44; South Bend city limits = 16).

Context: Average Home: 6 – 9 kW required

Roof or Ground?

Roof-Mounted: 67

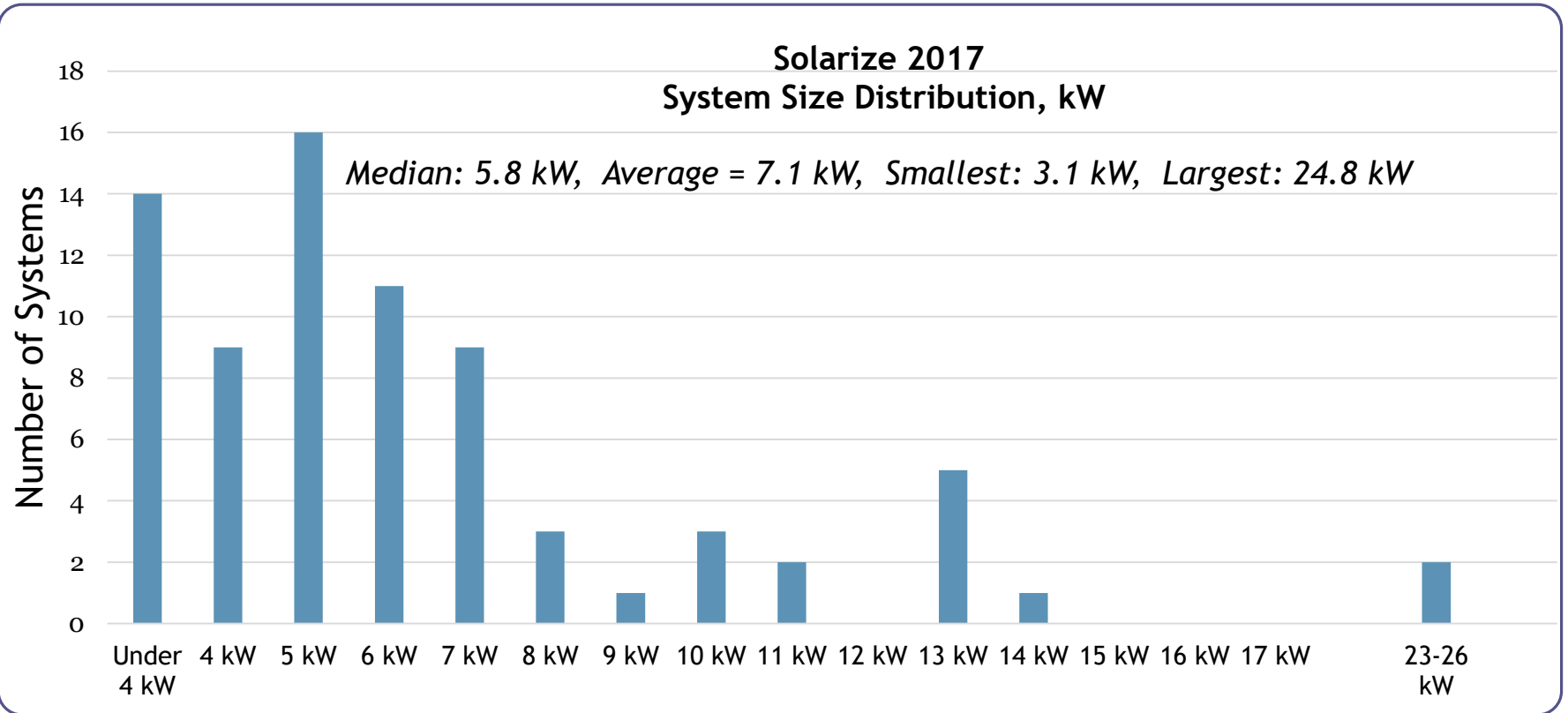


Ground-Mounted: 9



Elkhart County: 5
St Joseph County: 1
LaPorte County: 1
City of Goshen: 2

5.8 kW replaces 60% of electricity for an average Hoosier household



Anticipated System Size Distribution: 2017 + Scheduled 2018 Projects

