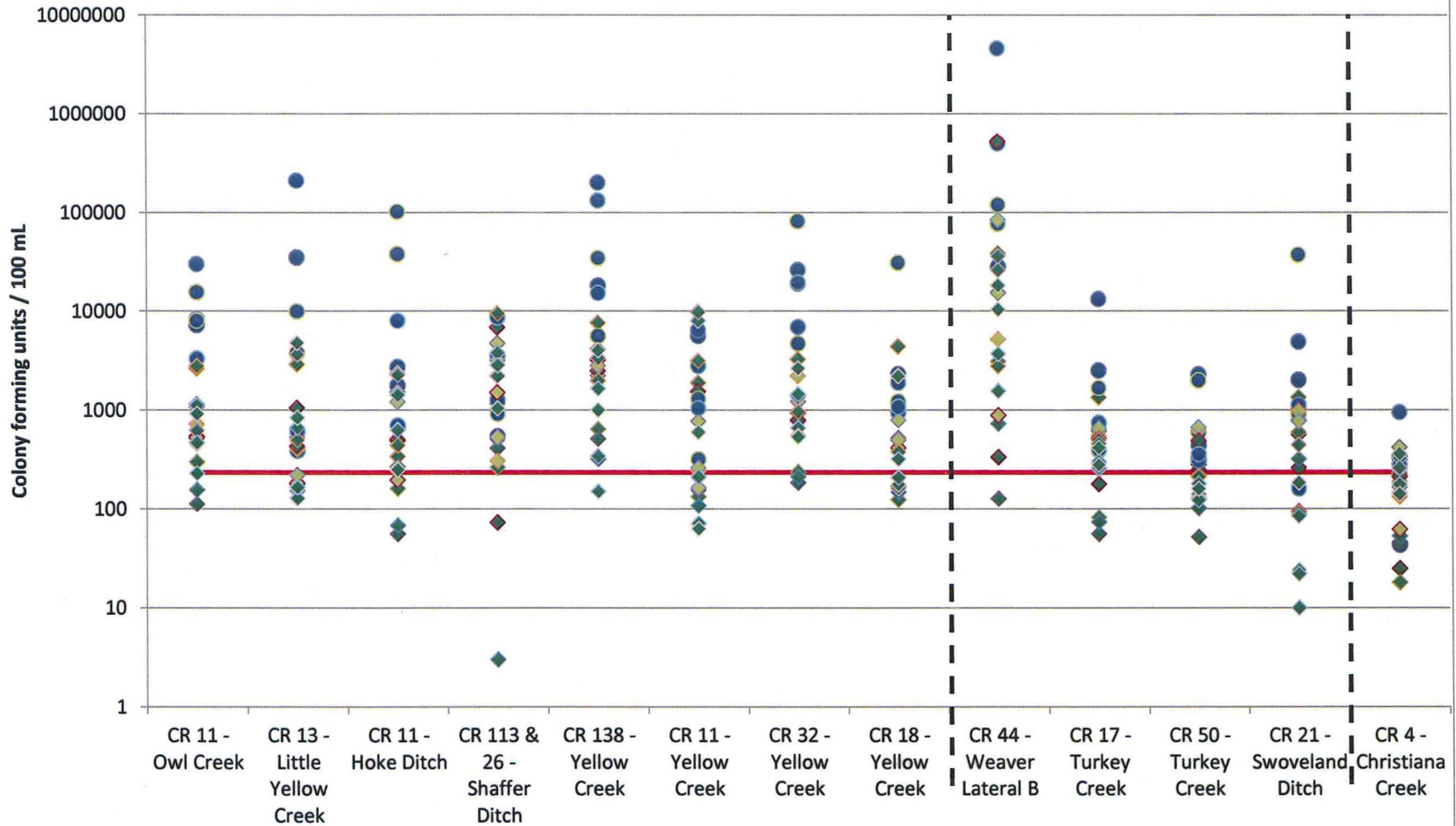


APPENDIX

TWO

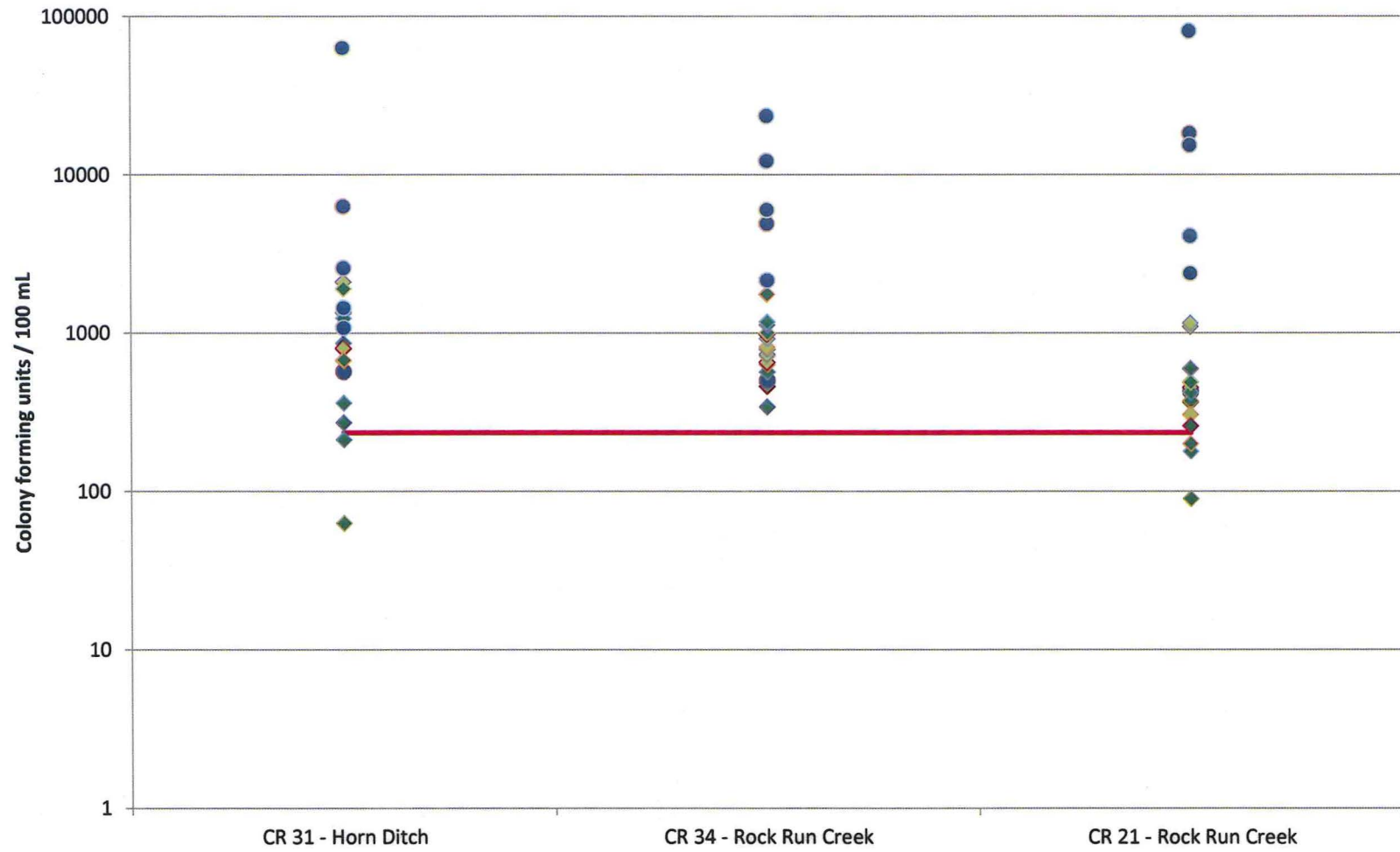
2013 Tributary *E. coli* Data

● Wet Event ◆ Dry Event — Body Contact Limit = 235 CFU/100 mL

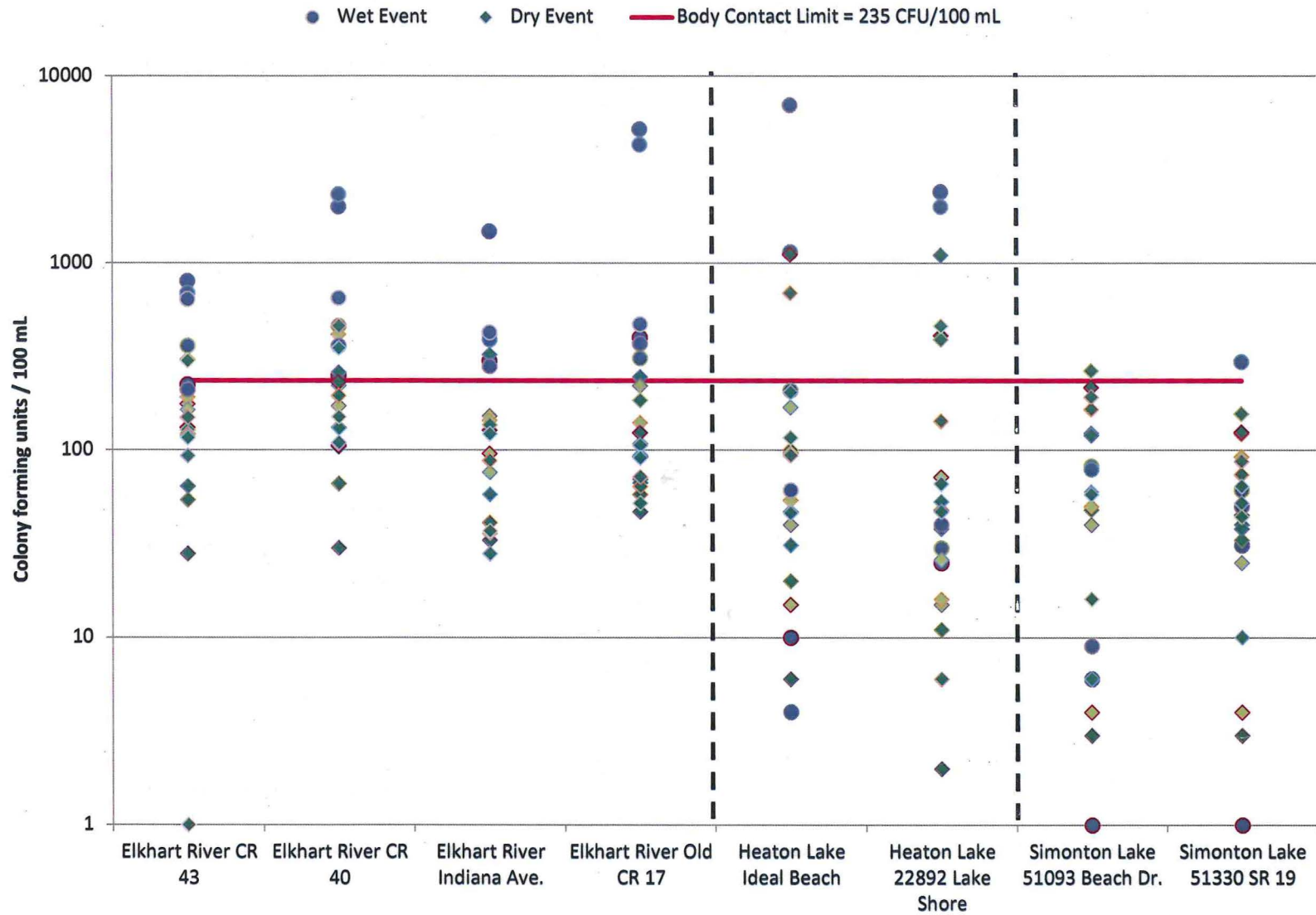


2013 Tributary *E. coli* Data

● Wet Event ◆ Dry Event — Body Contact Limit = 235 CFU/100 mL

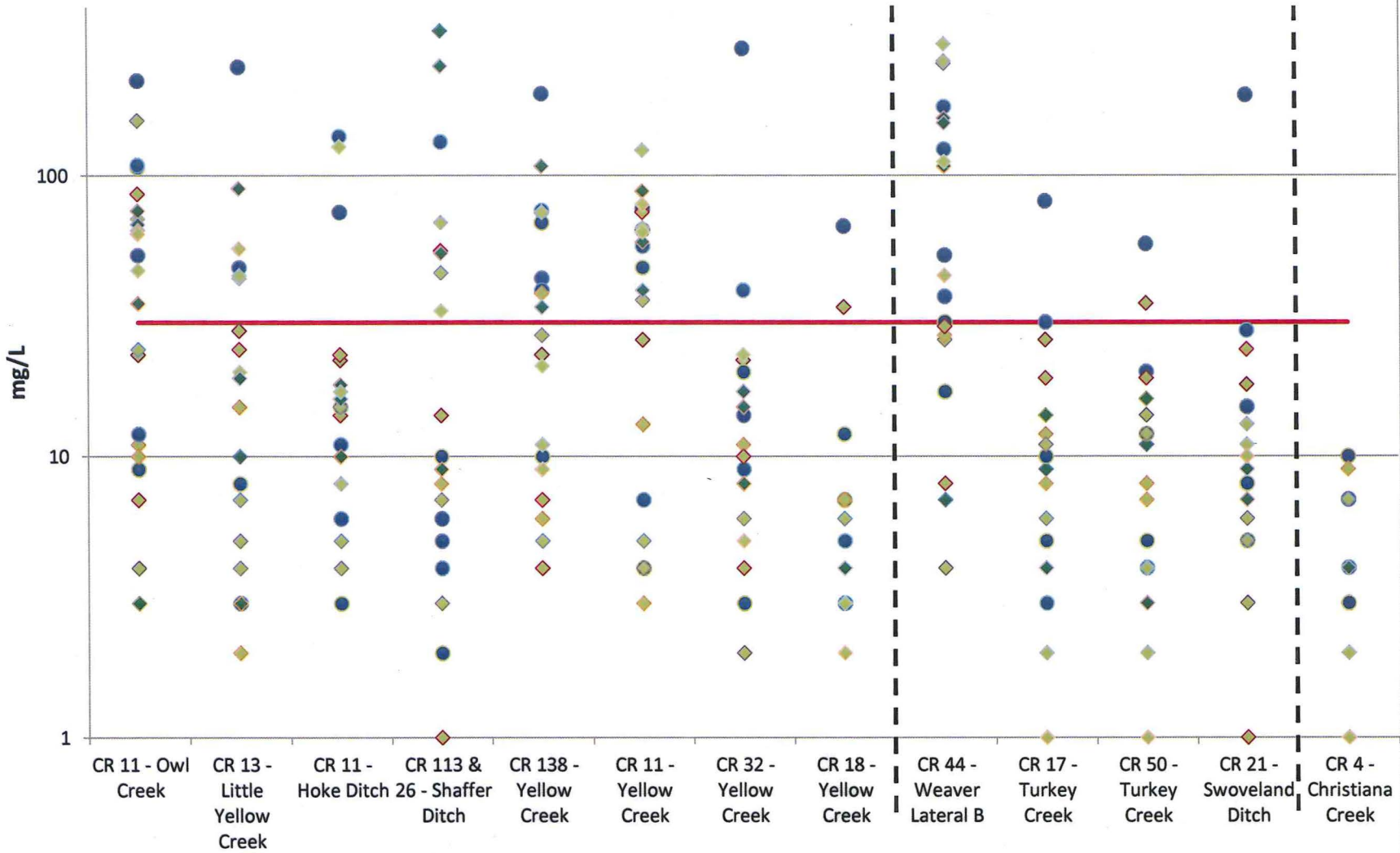


2013 Rivers & Lakes *E. coli* Data



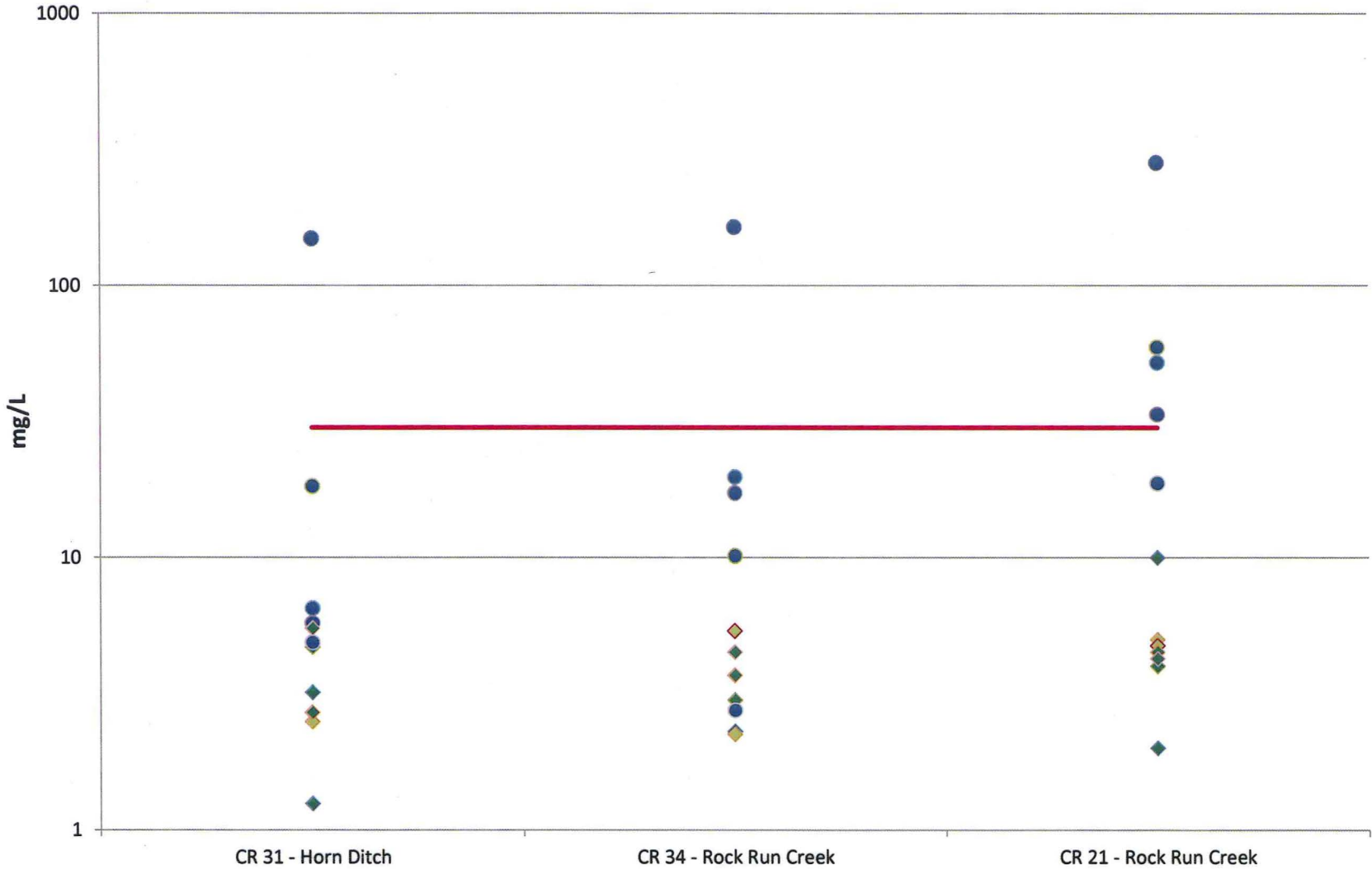
2013 Tributary TSS Data

● Wet Event ◆ Dry Event — Target Value = 30 mg/L



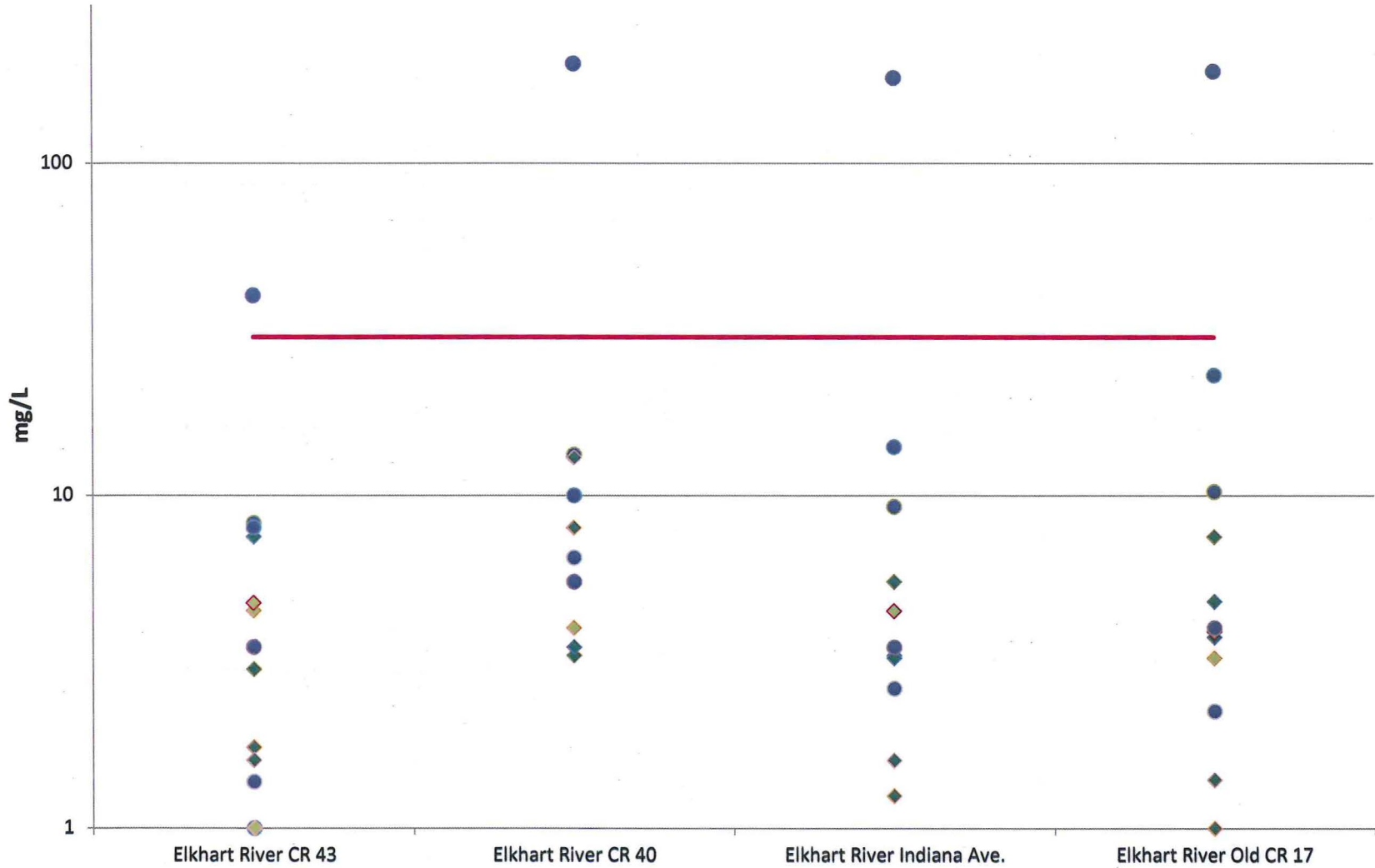
2013 Tributary TSS Data

● Wet Event ◆ Dry Event — Target Value = 30 mg/L



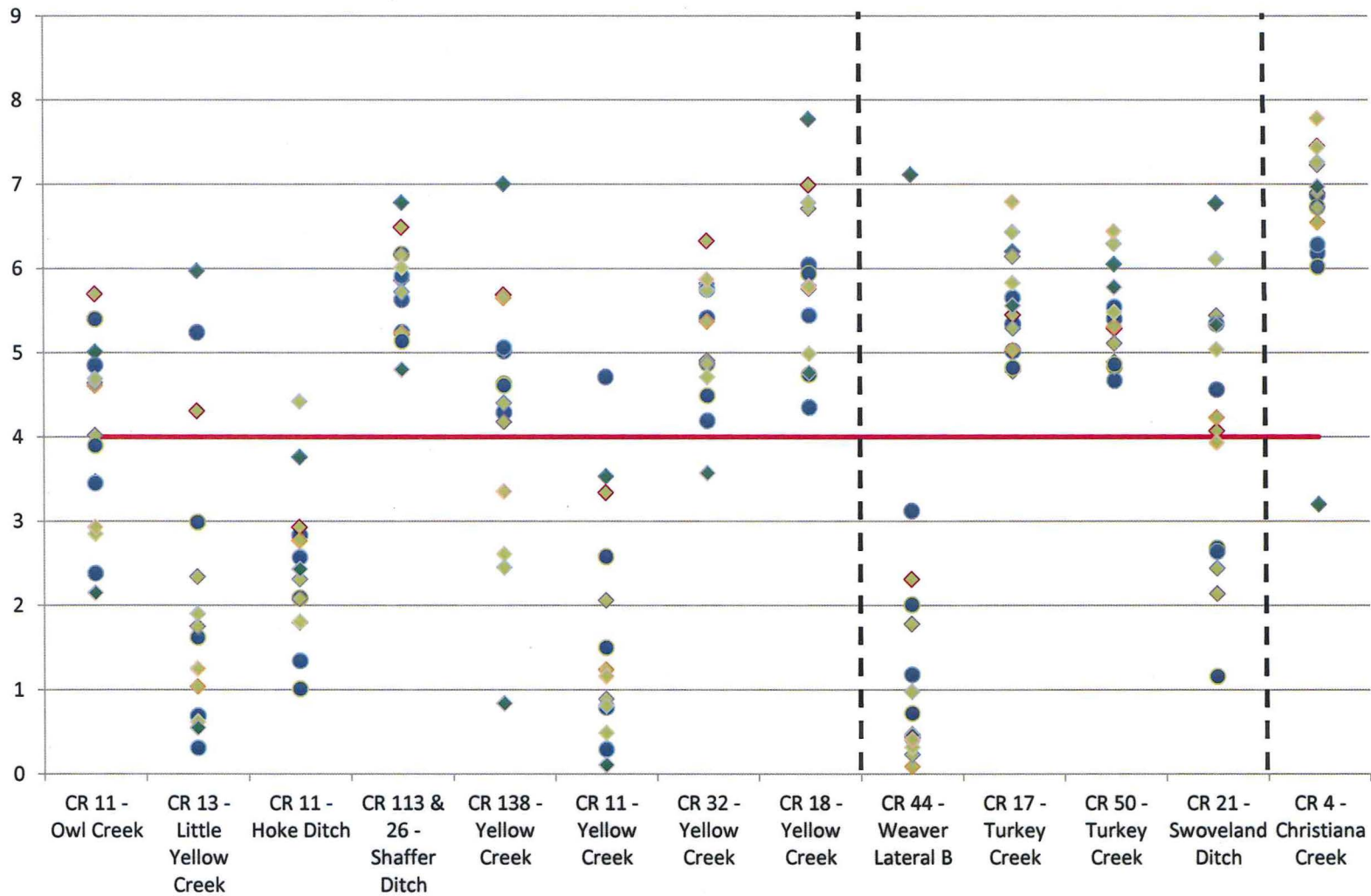
2013 Rivers & Lakes TSS Data

● Wet Event ◆ Dry Event — Target Value = 30 mg/L



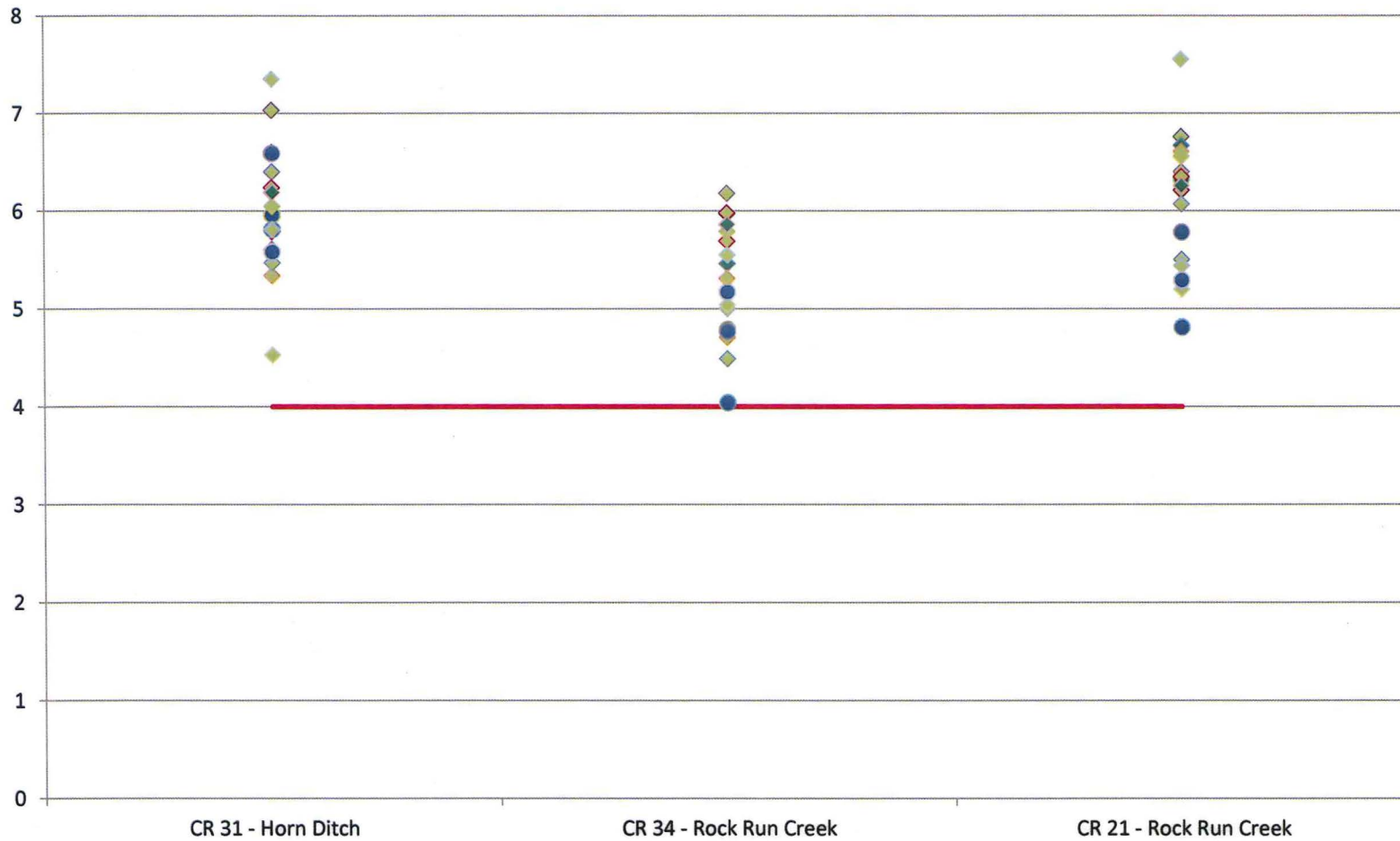
2013 Tributary Dissolved Oxygen Data

◆ Dry Event ● Wet Event — Target Value = 4.0 mg/L



2013 Tributary Dissolved Oxygen Data

● Wet Event ◆ Dry Event — Target Value = 4.0 mg/L



2013 Rivers & Lakes Dissolved Oxygen Data

● Wet Event ◆ Dry Event — Target Value = 4.0 mg/L

